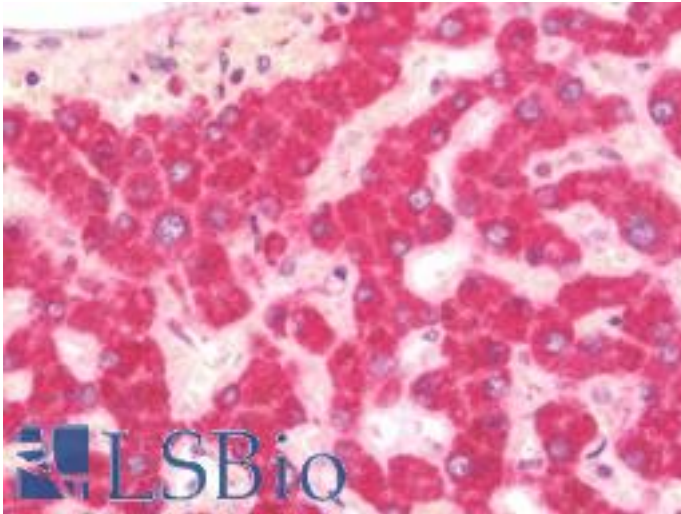


HSD11B1 / HSD11B Rabbit anti-Human Polyclonal (aa232-292) Antibody - LS-B10496 - LSBio

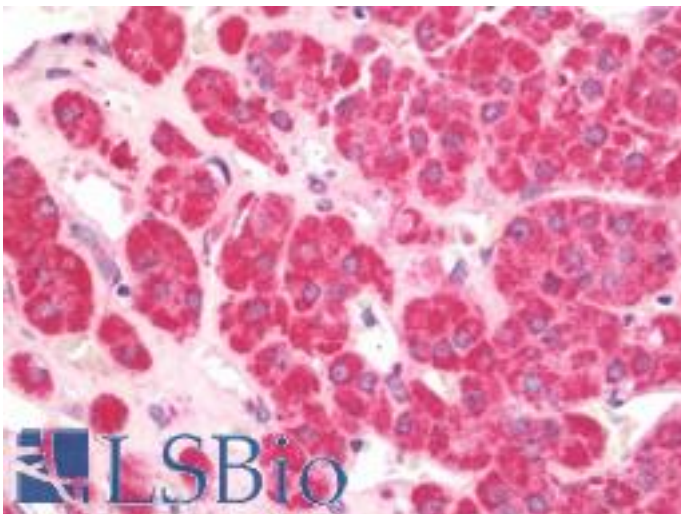
CatalogID:	LS-B10496
Validation:	This antibody replaces catalog number LS-C185636. It has been validated for use in the following assays: IHC-P.
Target:	hydroxysteroid (11-beta) dehydrogenase 1 (HSD11B1)
Synonyms:	HSD11B1 Antibody, 11-beta-HSD1 Antibody, 11-DH Antibody, CORTD2 Antibody, HSD11B Antibody, HSD11L Antibody, SDR26C1 Antibody, HDL Antibody, HSD11 Antibody
Host	HSD11B1 antibody was produced in Rabbit
Clonality:	Polyclonal
Isotype:	IgG
Immunogen Species:	HSD11B1 / HSD11B antibody was raised against Human
Antigen Type:	Synthetic peptide
Immunogen:	HSD11B1 / HSD11B antibody was raised against synthetic peptide corresponding to a region within amino acids 232 and 292 of HSD11B1.
Specificity:	Human HSD11B1
Epitope:	aa232-292
Reactivity:	Human, Sheep
Purification:	Immunoaffinity purified
Presentation:	PBS, pH 7.0, 40% glycerol, 0.01% Thimerosal
Recommended Storage:	Keep as concentrated solution. Aliquot and store at -20°C or below. Avoid multiple freeze-thaw cycles.
Uses:	IHC - Paraffin (5 µg/ml), IHC - Frozen, ICC (1:100 - 1:1000), Western blot (1:500 - 1:3000) (Optimal dilution to be determined by the researcher)
Size:	50 µl
Concentration:	1 mg/ml

Immunohistochemistry Image:



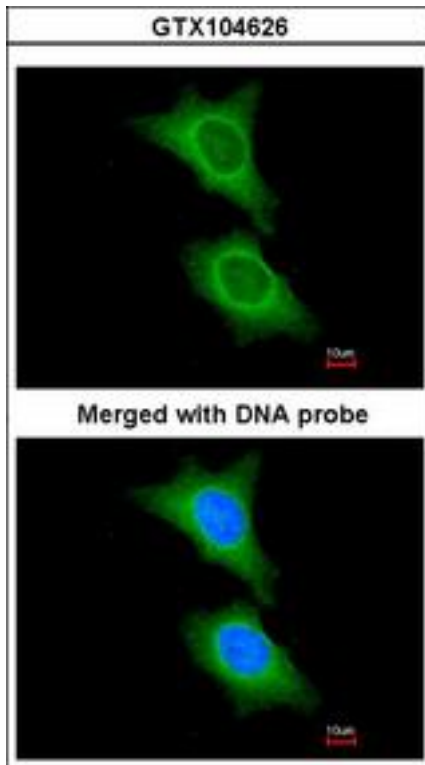
Human Liver: Formalin-Fixed, Paraffin-Embedded (FFPE)

Immunohistochemistry Image:



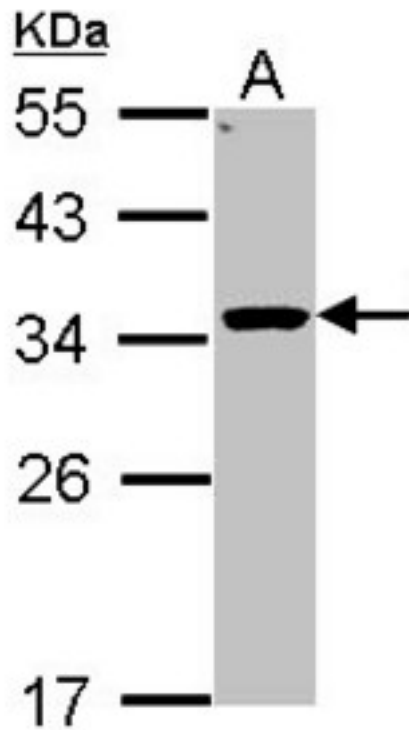
Human Adrenal: Formalin-Fixed, Paraffin-Embedded (FFPE)

Immunocytochemistry Image:



Immunofluorescence of paraformaldehyde-fixed HeLa using HSD11B1 antibody at 1:200 dilution.

Western Blot Image:



Sample (30 ug of whole cell lysate). A: Hep G2 . 12% SDS PAGE. HSD11B1 antibody diluted at 1:1000.

Requested From:

Japan

Laboratory Reagent For In Vitro Research Use Only

Not for resale without prior written consent from LifeSpan BioSciences, Inc.

Created on 9/23/2014

© 2014 LifeSpan BioSciences