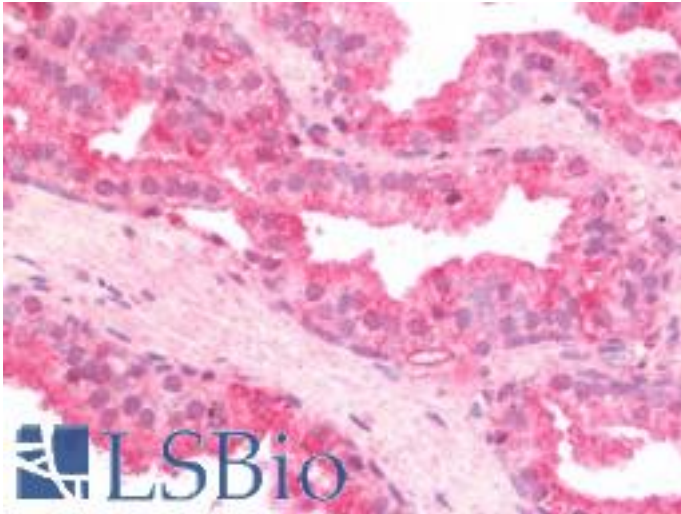


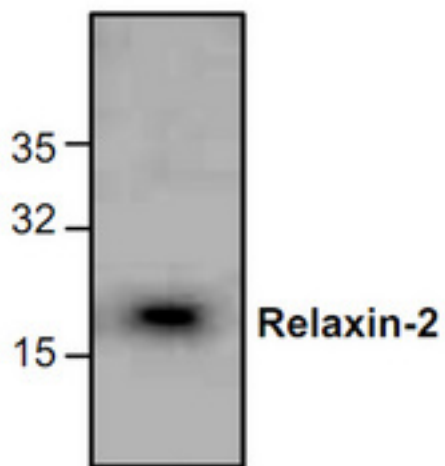
RLN2 / Relaxin 2 Rabbit anti-Human Polyclonal Antibody - LS-B10495 - LSBio	
<b>CatalogID:</b>	LS-B10495
<b>Validation:</b>	This antibody replaces catalog number LS-C147028. It has been validated for use in the following assays: IHC-P.
<b>Target:</b>	relaxin 2 (RLN2)
<b>Synonyms:</b>	RLN2 Antibody, BA12D24.1.2 Antibody, H2 Antibody, Relaxin, ovarian, of pregnancy Antibody, Relaxin 2 (H2) Antibody, BA12D24.1.1 Antibody, Prorelaxin H2 Antibody, Relaxin 2 Antibody, Relaxin H2 Antibody, RLXH2 Antibody
<b>Host</b>	RLN2 antibody was produced in Rabbit
<b>Clonality:</b>	Polyclonal
<b>Isotype:</b>	IgG
<b>Immunogen Species:</b>	RLN2 / Relaxin 2 antibody was raised against Human
<b>Antigen Type:</b>	Synthetic peptide
<b>Immunogen:</b>	RLN2 / Relaxin 2 antibody was raised against synthetic peptide surrounding amino acid 98 of human Relaxin-2
<b>Specificity:</b>	Human RLN2 / Relaxin 2
<b>Reactivity:</b>	Human
<b>Purification:</b>	Purified
<b>Presentation:</b>	PBS, 30% glycerol, 0.5% BSA, 0.01% Thimerosal
<b>Recommended Storage:</b>	Store at -20°C.
<b>Uses:</b>	IHC - Paraffin (5 µg/ml), Western blot (0.5 - 4 µg/ml) (Optimal dilution to be determined by the researcher)
<b>Size:</b>	100 µg
<b>Concentration:</b>	0.5 mg/ml

**Immunohistochemistry Image:**



Human Prostate: Formalin-Fixed, Paraffin-Embedded (FFPE)

**Western Blot Image:**



**Requested From:**

Japan

Laboratory Reagent For In Vitro Research Use Only

Not for resale without prior written consent from LifeSpan BioSciences, Inc.

Created on 9/23/2014

© 2014 LifeSpan BioSciences