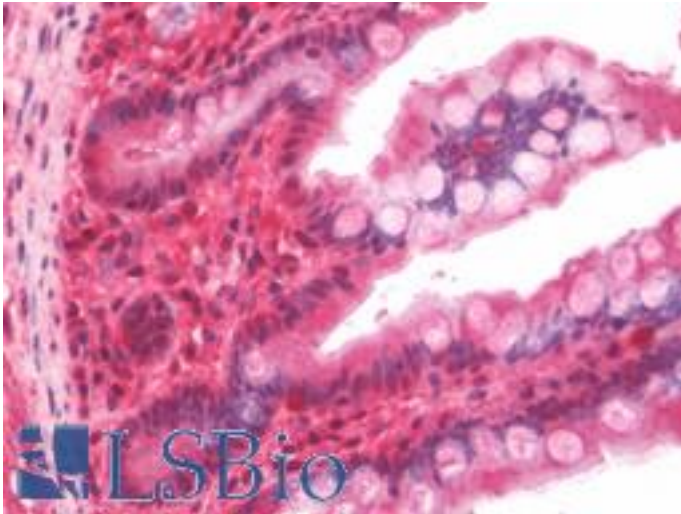


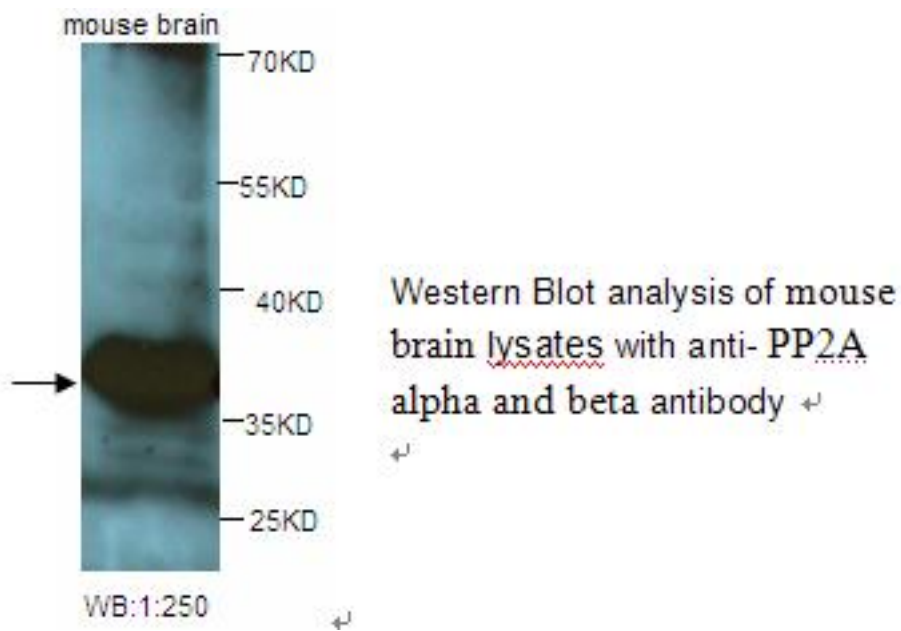
PP2Ac / PPP2CA Rabbit anti-Human Polyclonal Antibody - LS-B10491 - LSBio	
<b>CatalogID:</b>	LS-B10491
<b>Validation:</b>	This antibody replaces catalog number LS-C136906. It has been validated for use in the following assays: IHC-P.
<b>Target:</b>	protein phosphatase 2, catalytic subunit, alpha isozyme (PPP2CA)
<b>Synonyms:</b>	PPP2CA Antibody, PP2Ac Antibody, PP2Calpha Antibody, ppp2A1 Antibody, Protein phosphatase 2A alpha Antibody, Replication protein C Antibody, PP2CA Antibody, RP-C Antibody, PP2A-alpha Antibody
<b>Family / Subfamily:</b>	Protein Phosphatase / PP2A
<b>Host</b>	PPP2CA antibody was produced in Rabbit
<b>Clonality:</b>	Polyclonal
<b>Isotype:</b>	IgG
<b>Immunogen Species:</b>	PP2Ac / PPP2CA antibody was raised against Human
<b>Antigen Type:</b>	Synthetic peptide - KLH conjugated
<b>Immunogen:</b>	PP2Ac / PPP2CA antibody was raised against synthetic peptide conjugated to KLH
<b>Specificity:</b>	PP2A alpha and beta Antibody detects endogenous levels of PP2A alpha and beta protein. Not tested with other proteins.
<b>Reactivity:</b>	Human, Mouse, Rat
<b>Purification:</b>	Purified
<b>Presentation:</b>	PBS, pH 7.4, 0.05% sodium azide
<b>Recommended Storage:</b>	Store at -20°C for up to one year.
<b>Uses:</b>	IHC - Paraffin (2.5 µg/ml), Western blot (1:200 - 1:1000), ELISA (1:8000) (Optimal dilution to be determined by the researcher)
<b>Size:</b>	50 µl
<b>Concentration:</b>	1 mg/ml

**Immunohistochemistry Image:**



Human Small Intestine: Formalin-Fixed, Paraffin-Embedded (FFPE)

**Western Blot Image:**



Requested From:

Japan

Laboratory Reagent For In Vitro Research Use Only

Not for resale without prior written consent from LifeSpan BioSciences, Inc.

Created on 9/23/2014

© 2014 LifeSpan BioSciences