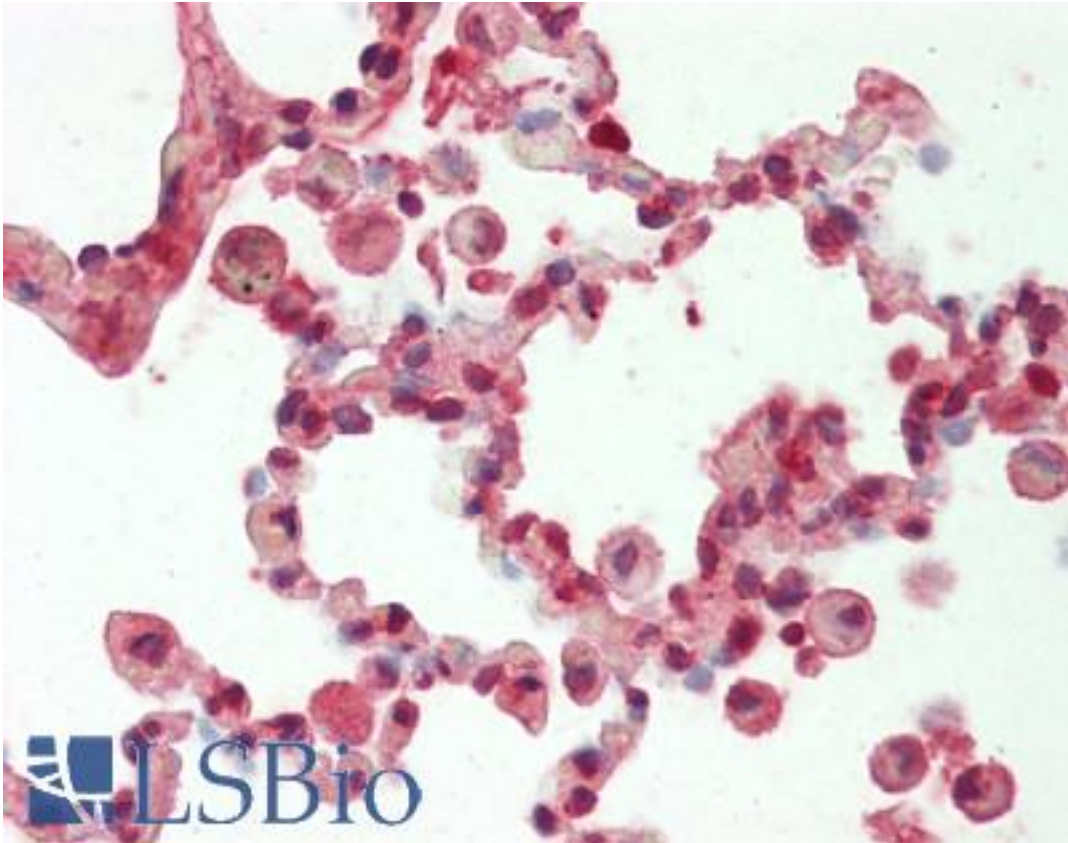


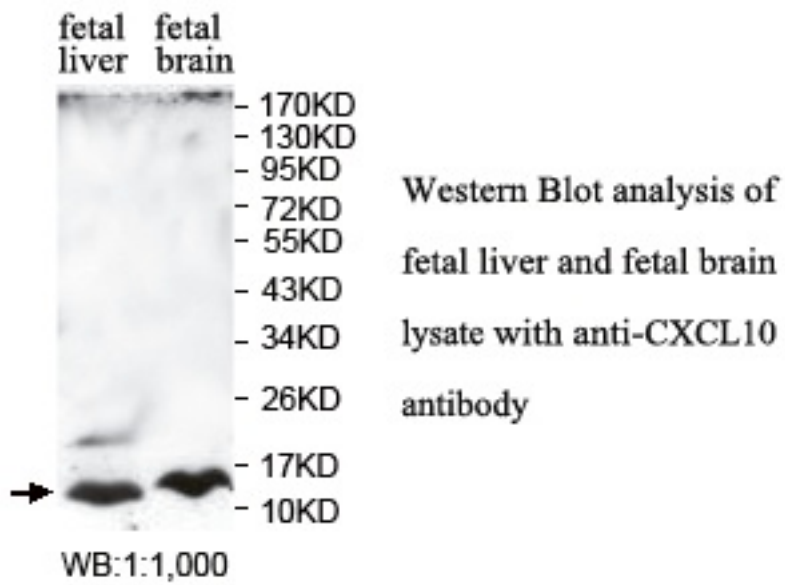
IP-10 / CXCL10 Rabbit anti-Human Polyclonal (aa22-98) Antibody - LS-B10486 - LSBio	
<b>CatalogID:</b>	LS-B10486
<b>Validation:</b>	This antibody replaces catalog number LS-C178937. It has been validated for use in the following assays: IHC-P.
<b>Target:</b>	chemokine (C-X-C motif) ligand 10 (CXCL10)
<b>Synonyms:</b>	CXCL10 Antibody, C-X-C motif chemokine 10 Antibody, Gamma-IP10 Antibody, IP-10 Antibody, Gamma IP10 Antibody, GIP-10 Antibody, Mob-1 Antibody, Small-inducible cytokine B10 Antibody, Crg-2 Antibody, IFI10 Antibody, INP10 Antibody, SCYB10 Antibody
<b>Family / Subfamily:</b>	Intercrine / Intercrine alpha
<b>Host</b>	CXCL10 antibody was produced in Rabbit
<b>Clonality:</b>	Polyclonal
<b>Immunogen Species:</b>	IP-10 / CXCL10 antibody was raised against Human
<b>Antigen Type:</b>	Recombinant protein
<b>Immunogen:</b>	IP-10 / CXCL10 antibody was raised against a recombinant human CXCL10 protein 22-98aa (BC010954).
<b>Specificity:</b>	Human IP-10 / CXCL10.
<b>Epitope:</b>	aa22-98
<b>Reactivity:</b>	Human
<b>Purification:</b>	Affinity purified
<b>Presentation:</b>	PBS, pH 7.4, 0.02% sodium azide
<b>Recommended Storage:</b>	Store at -20°C for up to one year.
<b>Uses:</b>	IHC - Paraffin (2.5 µg/ml), Western blot (1:1000 - 1:2000), ELISA (1:20000 - 1:80000) (Optimal dilution to be determined by the researcher)
<b>Size:</b>	50 µl
<b>Concentration:</b>	1 mg/ml

**Immunohistochemistry Image:**



Human Lung: Formalin-Fixed, Paraffin-Embedded (FFPE)

**Western Blot Image:**



Requested From:

Japan

Laboratory Reagent For In Vitro Research Use Only

Not for resale without prior written consent from LifeSpan BioSciences, Inc.

Created on 9/23/2014

© 2014 LifeSpan BioSciences