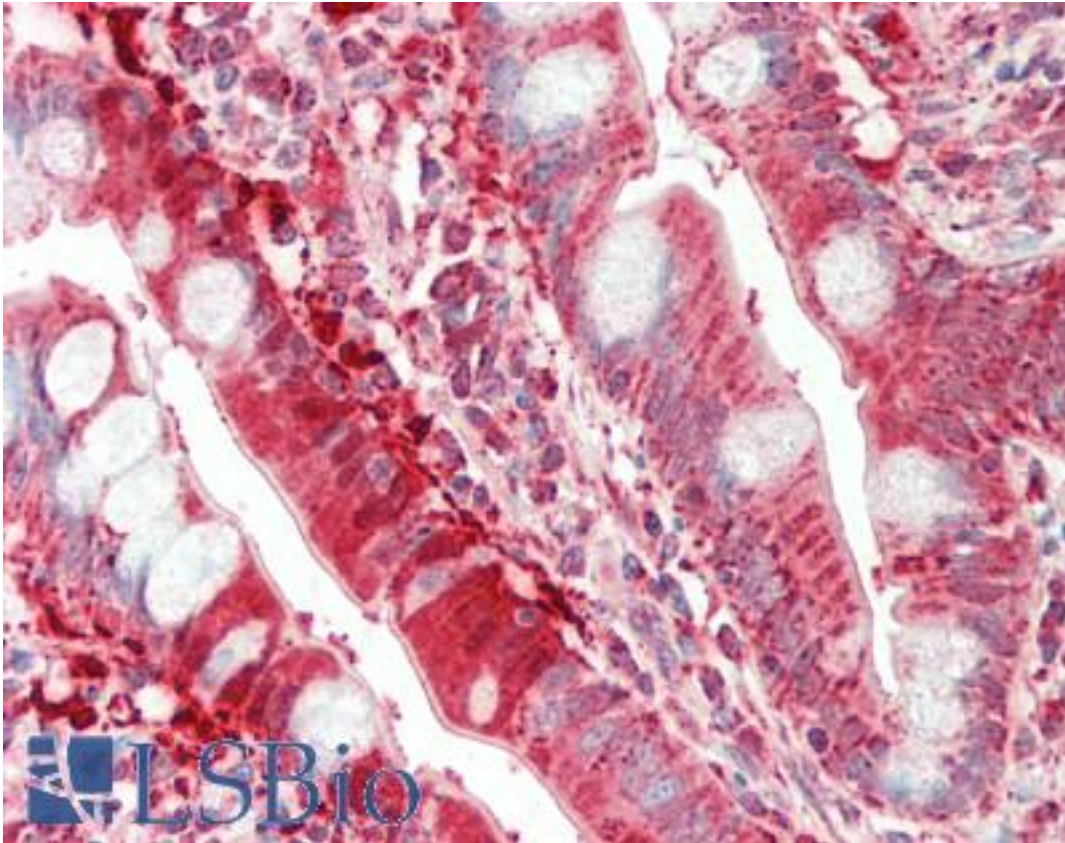


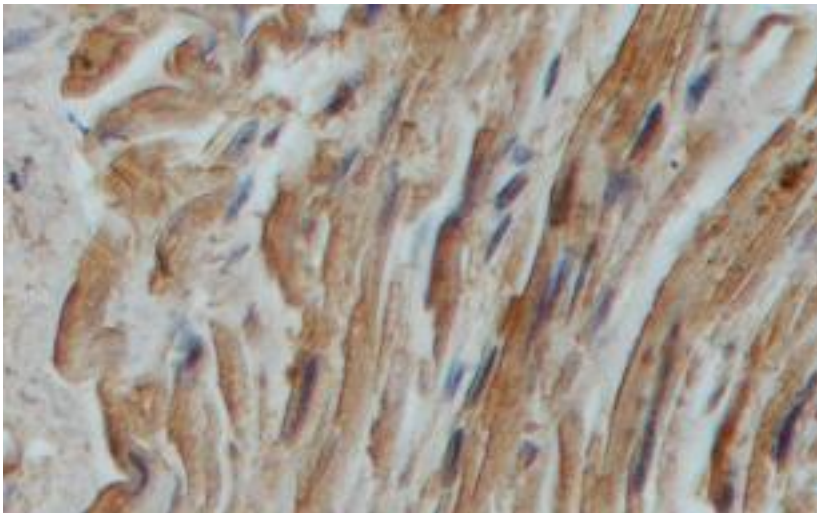
CHEK1 / CHK1 Rabbit anti-Human Polyclonal Antibody - LS-B10485 - LSBio

CatalogID:	LS-B10485
Validation:	This antibody replaces catalog number LS-C137264. It has been validated for use in the following assays: IHC-P.
Target:	checkpoint kinase 1 (CHEK1)
Synonyms:	CHEK1 Antibody, CHK1 checkpoint homolog Antibody, Cell cycle checkpoint kinase Antibody, Checkpoint kinase 1 Antibody, CHK1 Antibody, Chk1-S Antibody, Protein kinase chk1 Antibody, Checkpoint kinase-1 Antibody
Family / Subfamily:	Protein Kinase / NIM1
Host	CHEK1 antibody was produced in Rabbit
Clonality:	Polyclonal
Isotype:	IgG
Immunogen Species:	CHEK1 / CHK1 antibody was raised against Human
Antigen Type:	Recombinant protein
Immunogen:	CHEK1 / CHK1 antibody was raised against recombinant protein
Reactivity:	Human
Purification:	Affinity purified
Presentation:	PBS, pH 7.4, 0.02% sodium azide
Recommended Storage:	Store at -20°C for up to one year.
Uses:	IHC, IHC - Paraffin (2.5 µg/ml), Western blot (Optimal dilution to be determined by the researcher)
Size:	50 µl
Concentration:	1 mg/ml

Immunohistochemistry Image:



Immunohistochemistry Image:



Immunohistochemical staining of formalin-fixed paraffin-embedded fetal heart showing Cytoplasmic and Nuclear staining with anti-Chk1 antibody at a dilution of 1/100.

Western Blot Image:

Fetal
Hela Jurkat lung MCF7



— 95KD
— 72KD Western Blot
— 55KD analysis of
— 43KD Hela, Jurkat fetal
— 34KD lung MCF7 cell
Lysate with anti-
Chk1 antibody

WB 1:1000

Requested From:

Japan

Laboratory Reagent For In Vitro Research Use Only

Not for resale without prior written consent from LifeSpan BioSciences, Inc.

Created on 9/23/2014

© 2014 LifeSpan BioSciences