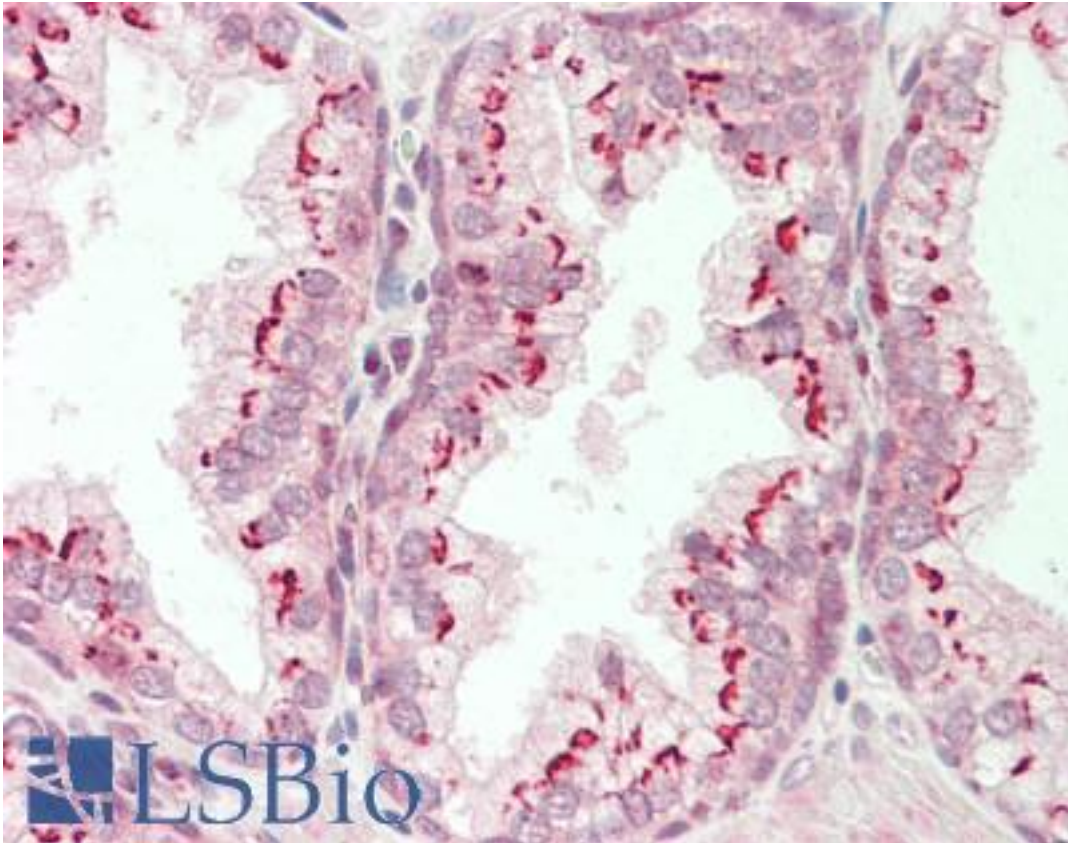


CTNNB1 / Beta Catenin Rabbit anti-Human Polyclonal (Internal) Antibody - LS-B10484 - LSBio

<b>CatalogID:</b>	LS-B10484
<b>Validation:</b>	This antibody replaces catalog number LS-C137168. It has been validated for use in the following assays: IHC-P.
<b>Target:</b>	catenin (cadherin-associated protein), beta 1, 88kDa (CTNNB1)
<b>Synonyms:</b>	CTNNB1 Antibody, Beta-catenin Antibody, Catenin beta-1 Antibody, CTNNB Antibody, Beta Catenin Antibody
<b>Family / Subfamily:</b>	Catenin / not assigned-Catenin
<b>Host</b>	CTNNB1 antibody was produced in Rabbit
<b>Clonality:</b>	Polyclonal
<b>Isotype:</b>	IgG
<b>Immunogen Species:</b>	CTNNB1 / Beta Catenin antibody was raised against Human
<b>Antigen Type:</b>	Synthetic peptide
<b>Immunogen:</b>	CTNNB1 / Beta Catenin antibody was raised against a peptide near internal region of human CTNNB1 protein
<b>Epitope:</b>	Internal
<b>Reactivity:</b>	Human, Mouse, Rat
<b>Purification:</b>	Affinity purified
<b>Presentation:</b>	PBS, pH 7.4, 0.02% sodium azide
<b>Recommended Storage:</b>	Store at -20°C for up to one year.
<b>Uses:</b>	IHC (1:50 - 1:200), IHC - Paraffin (1:100), Western blot (1:200 - 1:1000), ELISA (1:5000 - 1:20000) (Optimal dilution to be determined by the researcher)
<b>Size:</b>	50 µl

**Immunohistochemistry Image:**



Human Prostate: Formalin-Fixed, Paraffin-Embedded (FFPE)

**Requested From:**

Japan

Laboratory Reagent For In Vitro Research Use Only

Not for resale without prior written consent from LifeSpan BioSciences, Inc.

Created on 9/23/2014

© 2014 LifeSpan BioSciences