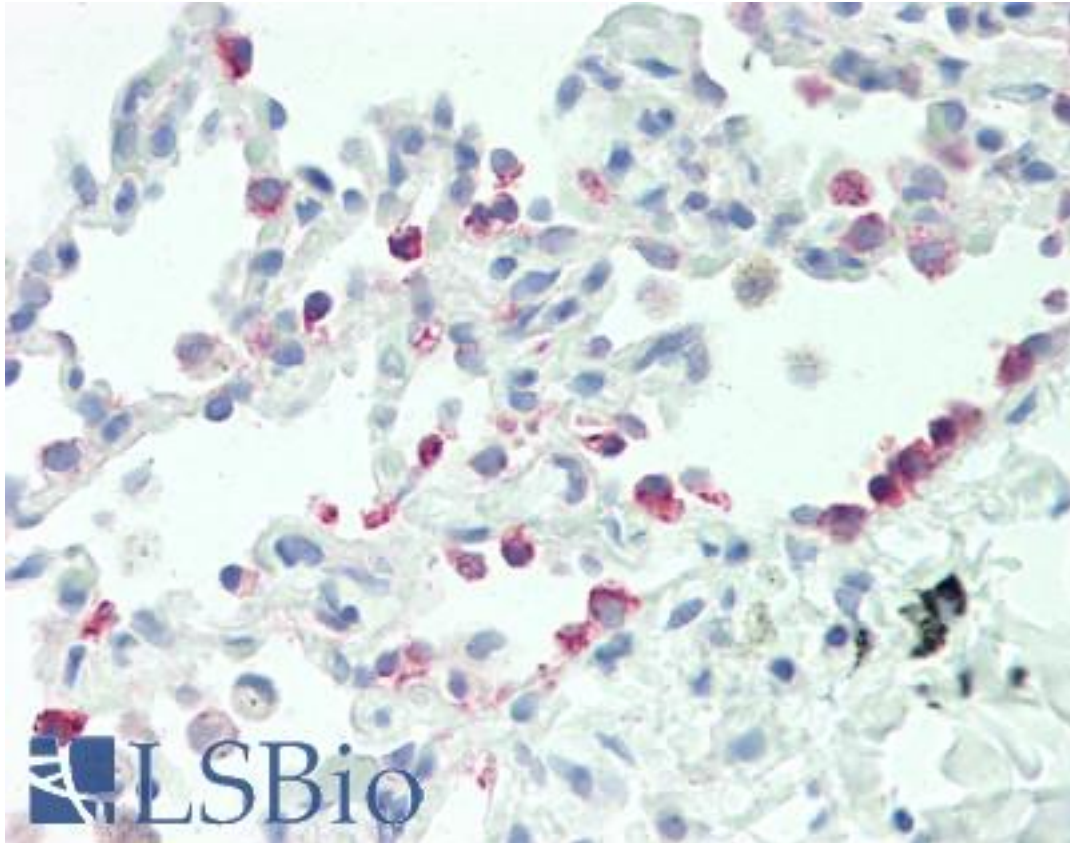


**CYP2B6 Rabbit anti-Human Polyclonal (aa 235-263) Antibody - LS-B10481 - LSBio**

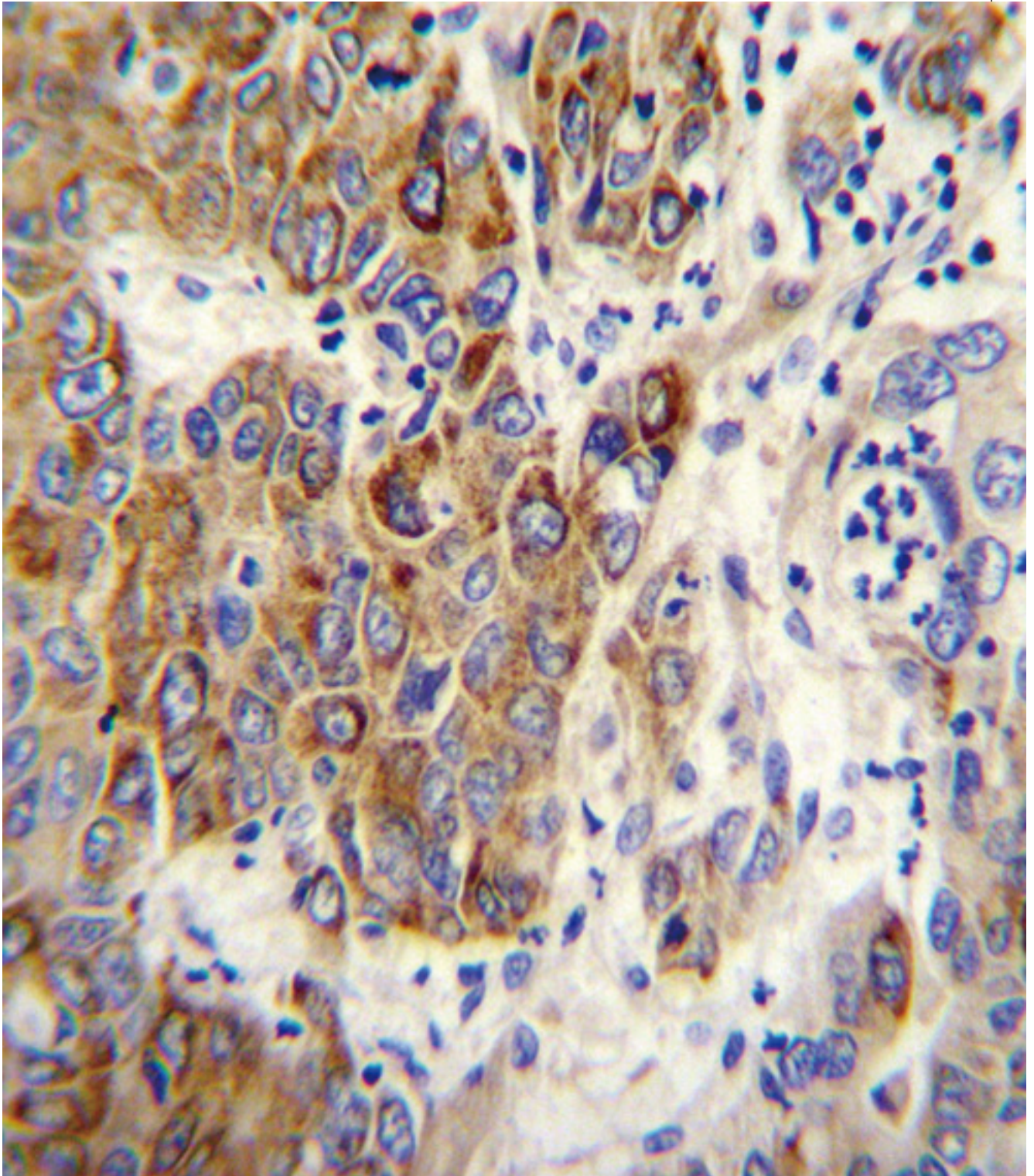
<b>CatalogID:</b>	LS-B10481
<b>Validation:</b>	This antibody replaces catalog number LS-C167220. It has been validated for use in the following assays: IHC-P.
<b>Target:</b>	cytochrome P450, family 2, subfamily B, polypeptide 6 (CYP2B6)
<b>Synonyms:</b>	CYP2B6 Antibody, CPB6 Antibody, CYP2B Antibody, CYP2B7P Antibody, EFVM Antibody, CYP2B7 Antibody, Cytochrome p450 IIb6 Antibody, p450 Antibody, CYP2B6 Antibody, Cytochrome P450 2B6 Antibody, Cytochrome P450 IIB1 Antibody, IIB1 Antibody
<b>Family / Subfamily:</b>	Cytochrome P450 / not assigned-Cytochrome P450
<b>Host</b>	CYP2B6 antibody was produced in Rabbit
<b>Clonality:</b>	Polyclonal
<b>Immunogen Species:</b>	CYP2B6 antibody was raised against Human
<b>Antigen Type:</b>	Synthetic peptide
<b>Immunogen:</b>	CYP2B6 antibody was raised against kLH-conjugated synthetic peptide from internal region of human CYP2B6.
<b>Specificity:</b>	Human CYP2B6
<b>Epitope:</b>	aa 235-263
<b>Reactivity:</b>	Human
<b>Purification:</b>	Immunoaffinity purified
<b>Presentation:</b>	PBS, 0.09% sodium azide
<b>Recommended Storage:</b>	Maintain refrigerated at 2-8°C for up to 6 months. For long term storage store at -20°C.
<b>Uses:</b>	IHC - Paraffin (1:10 - 1:50), Immunofluorescence (1:10 - 1:50), Western blot (1:1000) (Optimal dilution to be determined by the researcher)
<b>Size:</b>	200 µl

**Immunohistochemistry Image:**



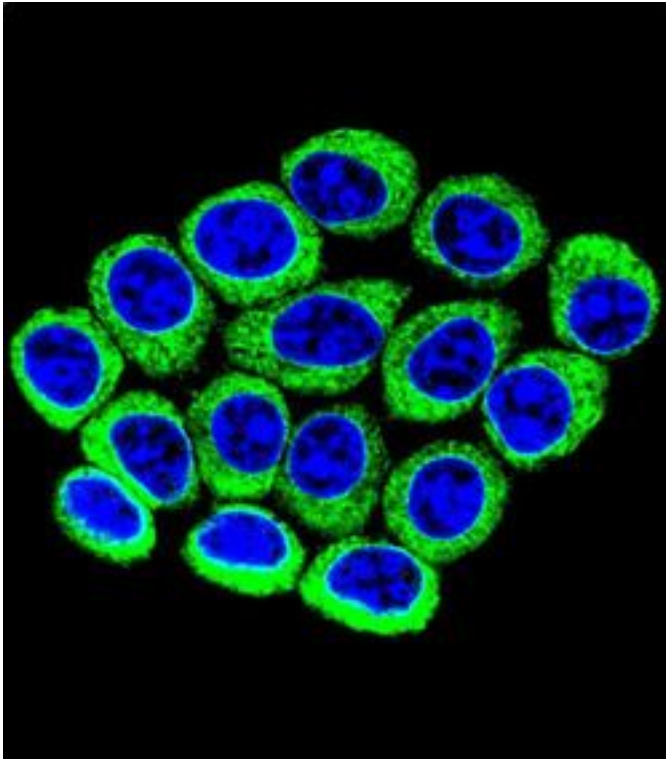
Human Lung: Formalin-Fixed, Paraffin-Embedded (FFPE)

**Immunohistochemistry Image:**



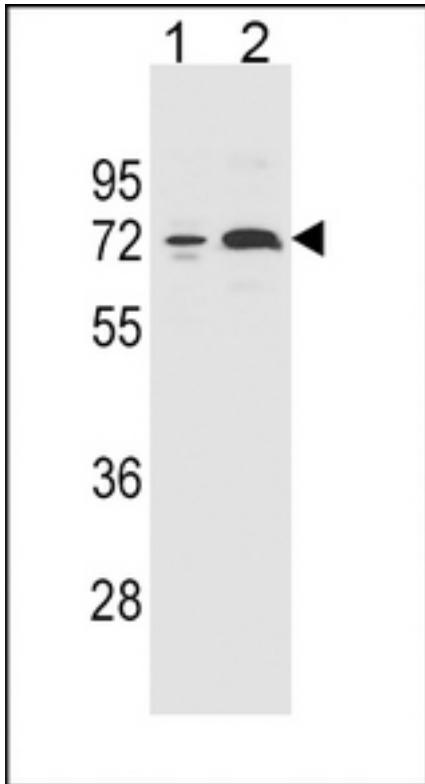
CYP2B6 Antibody (Center) IHC of formalin fixed and paraffin embedded human hepatocarcinoma followed by peroxidase conjugation of the secondary antibody and DAB staining. This demonstrates the use of CYP2B6 Antibody (Center) for immunohistochemistry.

**Immunofluorescence Image:**



Confocal immunofluorescence of CYP2B6 Antibody (Center) with 293 cell followed by Alexa Fluor 488-conjugated goat anti-rabbit IgG (green). DAPI was used to stain the cell nuclear (blue).

**Western Blot Image:**



CYP2B6 Antibody (Center) Western blot of 293 and K562 cell line lysates (35 ug/lane). This demonstrates the CYP2B6 antibody detected the CYP2B6 protein (arrow).

**Requested From:**

Japan

Laboratory Reagent For In Vitro Research Use Only

Not for resale without prior written consent from LifeSpan BioSciences, Inc.

Created on 9/23/2014

© 2014 LifeSpan BioSciences