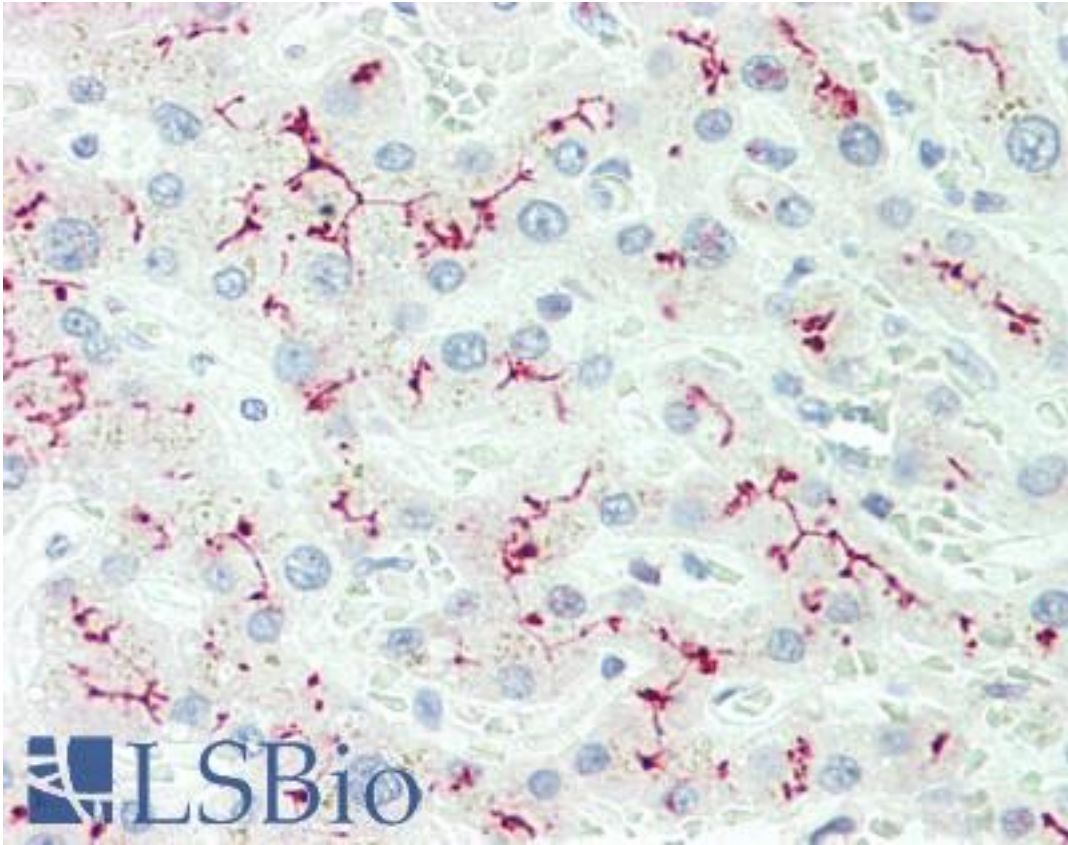


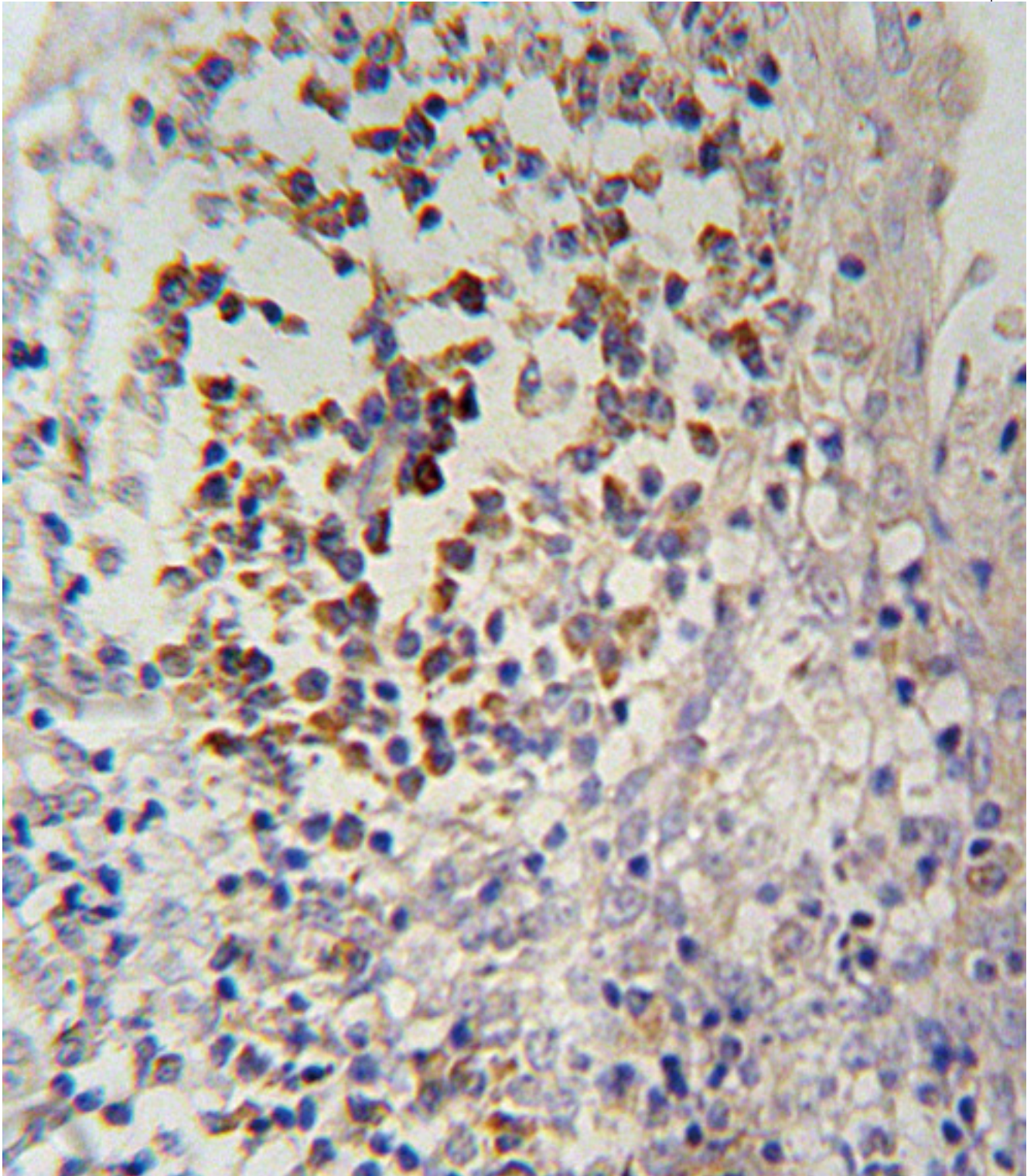
IL12RB2 Rabbit anti-Human Polyclonal (aa 756-783) Antibody - LS-B10479 - LSBio	
CatalogID:	LS-B10479
Validation:	This antibody replaces catalog number LS-C165173. It has been validated for use in the following assays: IHC-P.
Target:	interleukin 12 receptor, beta 2 (IL12RB2)
Synonyms:	IL12RB2 Antibody, Il-12R beta2 Antibody, IL-12R-beta-2 Antibody, IL-12 receptor beta 2 Antibody, Il-12 receptor beta2 Antibody, IL-12 receptor subunit beta-2 Antibody, IL-12R subunit beta-2 Antibody, RP11-102M16.1 Antibody, IL-12RB2 Antibody
Family / Subfamily:	Interleukin
Host	IL12RB2 antibody was produced in Rabbit
Clonality:	Polyclonal
Immunogen Species:	IL12RB2 antibody was raised against Human
Antigen Type:	Synthetic peptide
Immunogen:	IL12RB2 antibody was raised against kLH-conjugated synthetic peptide from C-terminal region of human IL12RB2.
Specificity:	Human IL12RB2
Epitope:	aa 756-783
Reactivity:	Human
Purification:	Immunoaffinity purified
Presentation:	PBS, 0.09% sodium azide
Recommended Storage:	Maintain refrigerated at 2-8°C for up to 6 months. For long term storage store at -20°C.
Uses:	IHC - Paraffin (1:50), Western blot (1:1000), Flow Cytometry (1:10 - 1:50) (Optimal dilution to be determined by the researcher)
Size:	200 µl

Immunohistochemistry Image:



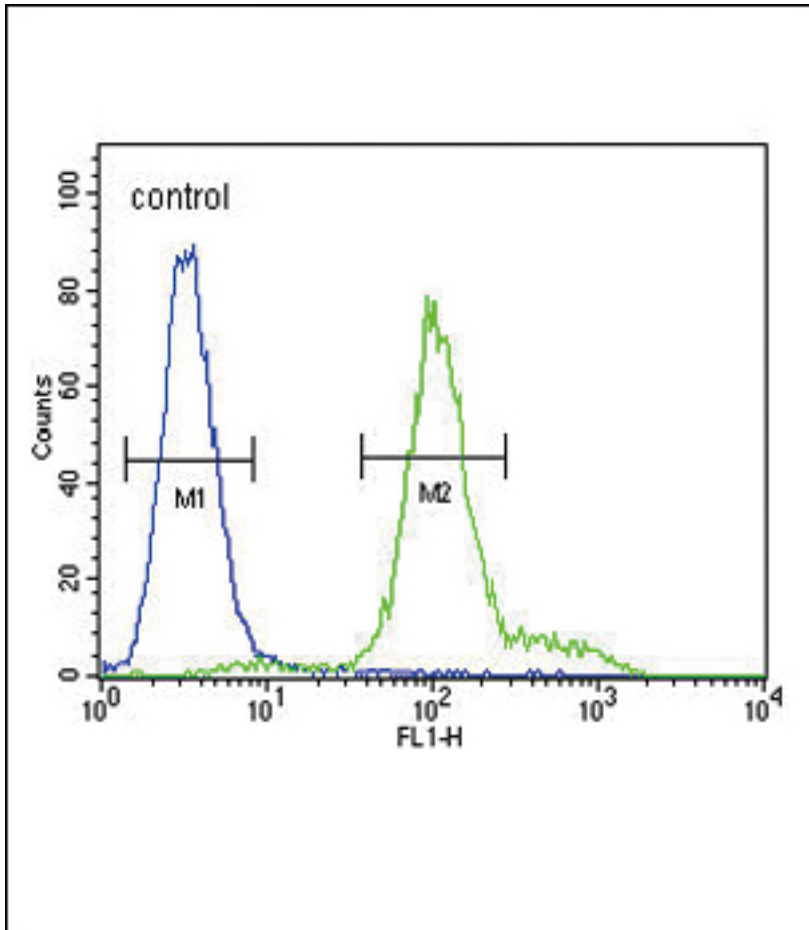
Human Liver: Formalin-Fixed, Paraffin-Embedded (FFPE)

Immunohistochemistry Image:



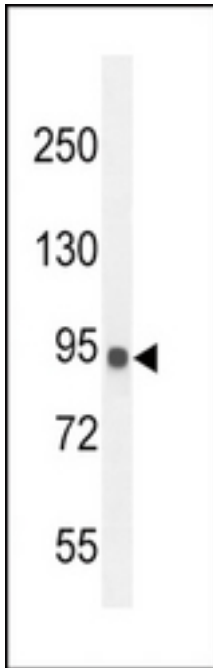
IL12RB2 Antibody (C-term) IHC of formalin fixed and paraffin embedded human tonsils tissue followed by peroxidase conjugation of the secondary antibody and DAB staining. This demonstrates the use of the IL12RB2 Antibody (C-term) for immunohistochemistry.

Flow Cytometry Image:



IL12RB2 Antibody (C-term) flow cytometry of MDA-MB435 cells (right histogram) compared to a negative control cell (left histogram). FITC-conjugated goat-anti-rabbit secondary antibodies were used for the analysis.

Western Blot Image:



IL12RB2 Antibody (C-term) Western blot of MDA-MB435 cell line lysates (35 ug/lane). This demonstrates the IL12RB2 antibody detected the IL12Cat. #2 protein (arrow).

Requested From:

Japan

Laboratory Reagent For In Vitro Research Use Only

Not for resale without prior written consent from LifeSpan BioSciences, Inc.

Created on 9/23/2014

© 2014 LifeSpan BioSciences