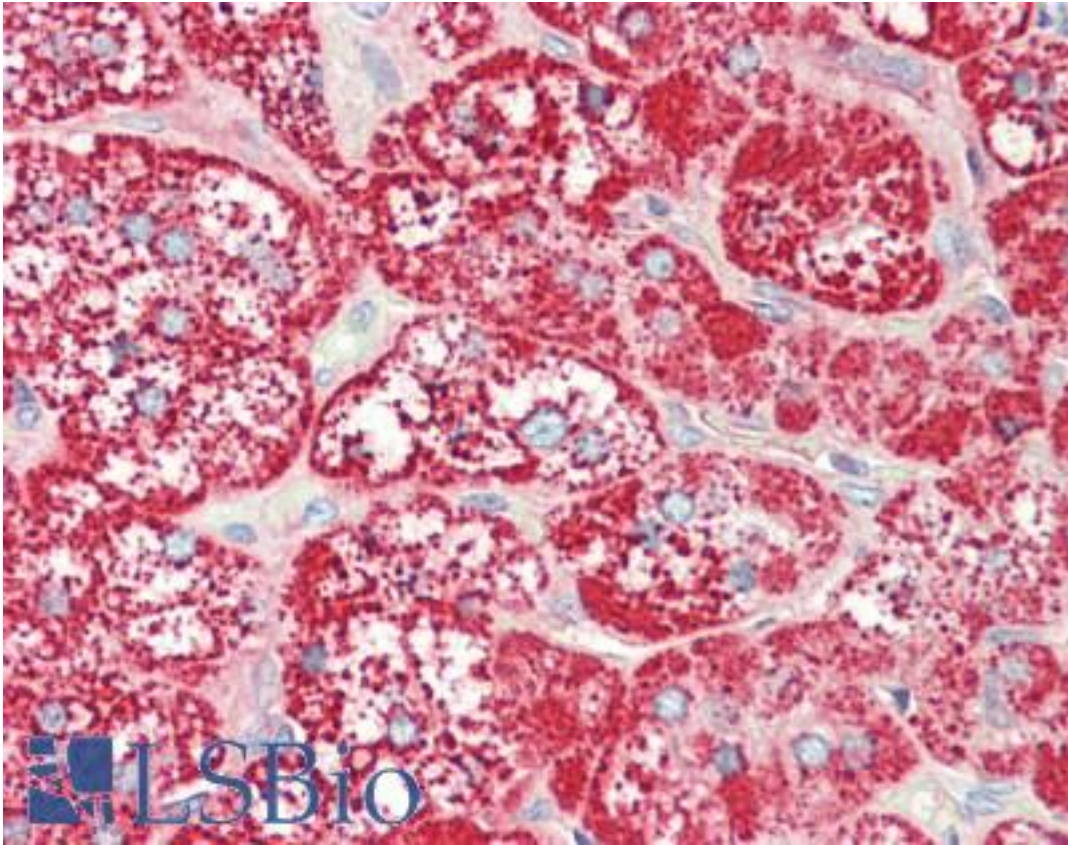


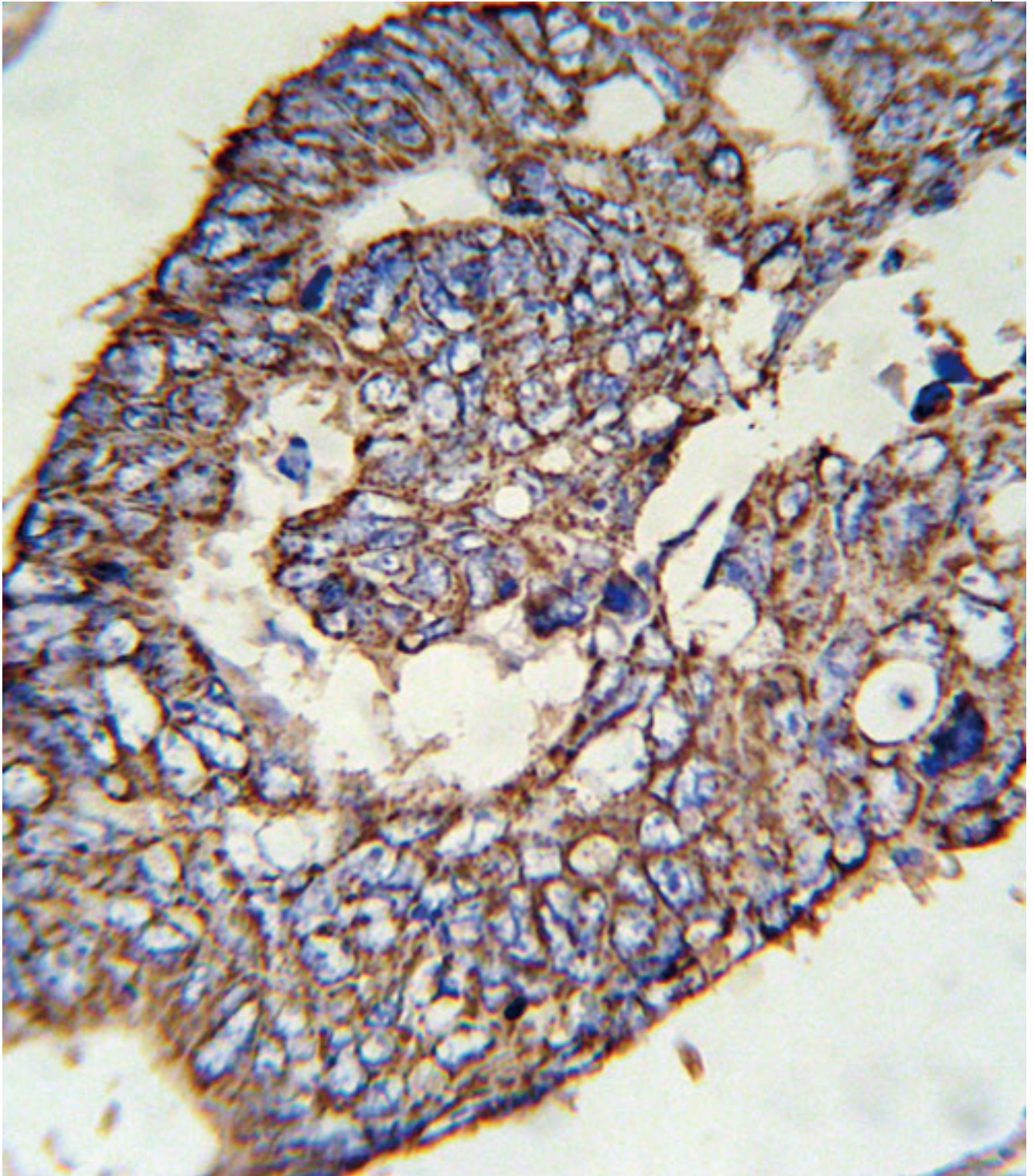
SLC47A1 / MATE1 Rabbit anti-Human Polyclonal (aa 492-519) Antibody - LS-B10477 - LSBio	
CatalogID:	LS-B10477
Validation:	This antibody replaces catalog number LS-C161255. It has been validated for use in the following assays: IHC-P.
Target:	solute carrier family 47 (multidrug and toxin extrusion), member 1 (SLC47A1)
Synonyms:	SLC47A1 Antibody, MATE-1 Antibody, MATE1 Antibody
Host	SLC47A1 antibody was produced in Rabbit
Clonality:	Polyclonal
Immunogen Species:	SLC47A1 / MATE1 antibody was raised against Human
Antigen Type:	Synthetic peptide
Immunogen:	SLC47A1 / MATE1 antibody was raised against kLH-conjugated synthetic peptide from C-terminal region of human SLC47A1.
Specificity:	Human SLC47A1 / MATE1
Epitope:	aa 492-519
Reactivity:	Human
Purification:	Immunoaffinity purified
Presentation:	PBS, 0.09% sodium azide
Recommended Storage:	Maintain refrigerated at 2-8°C for up to 6 months. For long term storage store at -20°C.
Uses:	IHC - Paraffin (1:10 - 1:100), Western blot (1:1000) (Optimal dilution to be determined by the researcher)
Size:	200 µl

Immunohistochemistry Image:



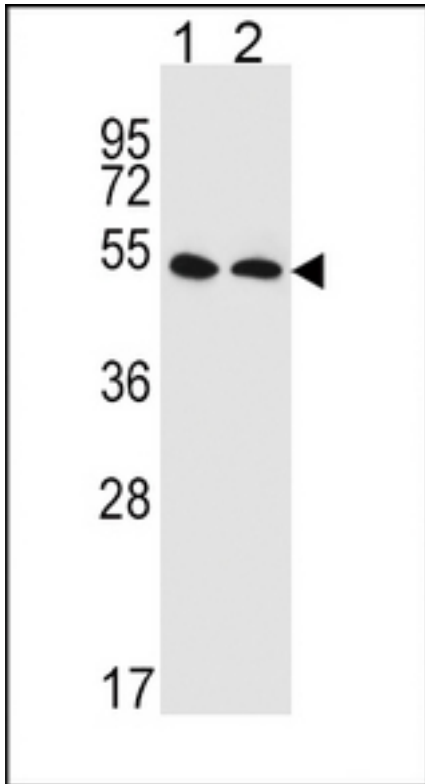
Human Adrenal: Formalin-Fixed, Paraffin-Embedded (FFPE)

Immunohistochemistry Image:



SLC47A1 Antibody (C-term) IHC of formalin fixed and paraffin embedded human colon carcinoma followed by peroxidase conjugation of the secondary antibody and DAB staining. This demonstrates the use of the SLC47A1 Antibody (C-term) for immunohistochemistry.

Western Blot Image:



SLC47A1 Antibody (C-term) Western blot of HepG2,MDA-MB435 cell line lysates (35 ug/lane). This demonstrates the SLC47A1 antibody detected the SLC47A1 protein (arrow).

Requested From:

Japan

Laboratory Reagent For In Vitro Research Use Only

Not for resale without prior written consent from LifeSpan BioSciences, Inc.

Created on 9/23/2014

© 2014 LifeSpan BioSciences