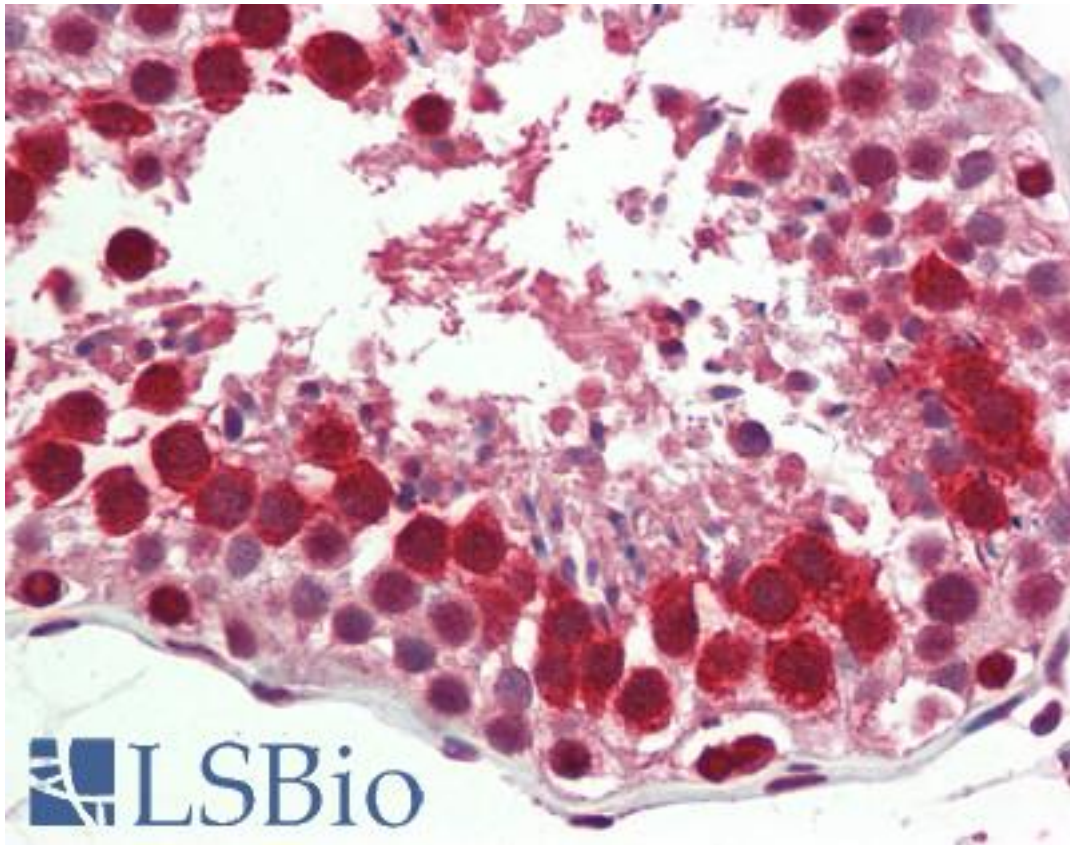


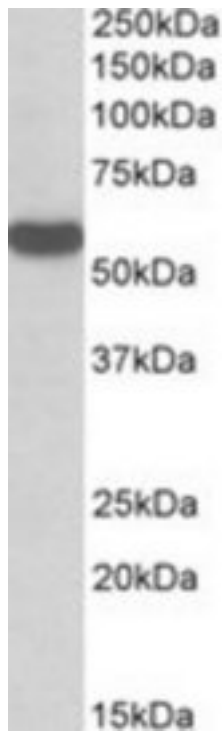
RTCB / C22orf28 Goat anti-Human Polyclonal (Internal) Antibody - LS-B10474 - LSBio	
<b>CatalogID:</b>	LS-B10474
<b>Validation:</b>	This antibody replaces catalog number LS-C139785. It has been validated for use in the following assays: IHC-P.
<b>Target:</b>	RNA 2',3'-cyclic phosphate and 5'-OH ligase (RTCB)
<b>Synonyms:</b>	RTCB Antibody, Ankyrin repeat domain 54 Antibody, C22orf28 Antibody, DJ149A16.6 Antibody, HSPC117 Antibody, FAAP Antibody, RP1-149A16.6 Antibody
<b>Host</b>	RTCB antibody was produced in Goat
<b>Clonality:</b>	Polyclonal
<b>Immunogen Species:</b>	RTCB / C22orf28 antibody was raised against Human
<b>Antigen Type:</b>	Synthetic peptide
<b>Immunogen:</b>	RTCB / C22orf28 antibody was raised against synthetic peptide C-QADPNKVSARAKKR from an internal region of human C22orf28 (NP_055121.1). Percent identity by BLAST analysis: Human, Gorilla, Gibbon, Monkey, Shrew, Elephant, Panda, Dog, Bat, Horse, Pig, Opossum, Armadillo, Platypus, Lizard (100%); Galago, Marmoset, Mouse, Hamster, Rabbit, Turkey, Chicken (93%); Stickleback, Zebrafish, Blood fluke, Seq squirt, Bloom alga (86%).
<b>Specificity:</b>	Human C22orf28.
<b>Epitope:</b>	Internal
<b>Reactivity:</b>	Human, Gorilla, Gibbon, Bat, Dog, Horse, Pig
<b>Purification:</b>	Immunoaffinity purified
<b>Presentation:</b>	Tris-buffered saline, pH 7.3, 0.5% BSA, 0.02% sodium azide
<b>Recommended Storage:</b>	Store at -20°C. Minimize freezing and thawing.
<b>Usage Summary:</b>	Peptide ELISA: antibody detection limit dilution 1:64000. Western blot: Approx 55kD band observed in lysates of cell lines HeLa, Jurkat and K562 (calculated MW of 55.2kD according to NP_055121.1). Recommended concentration: 0.1-0.3 ug/ml.
<b>Uses:</b>	IHC - Paraffin (5 µg/ml), Western blot (0.1 - 0.3 µg/ml), ELISA (1:64000) (Optimal dilution to be determined by the researcher)
<b>Size:</b>	50 µg
<b>Concentration:</b>	0.5 mg/ml

**Immunohistochemistry Image:**



Human, Testis: Formalin-Fixed Paraffin-Embedded (FFPE)

**Western Blot Image:**



C22orf28 antibody (0.3 ug/ml) staining of HeLa lysate (35 ug protein/ml in RIPA buffer). Primary incubation was 1 hour. Detected by chemiluminescence.

**Requested From:**

Japan

Laboratory Reagent For In Vitro Research Use Only

Not for resale without prior written consent from LifeSpan BioSciences, Inc.

Created on 9/23/2014

© 2014 LifeSpan BioSciences