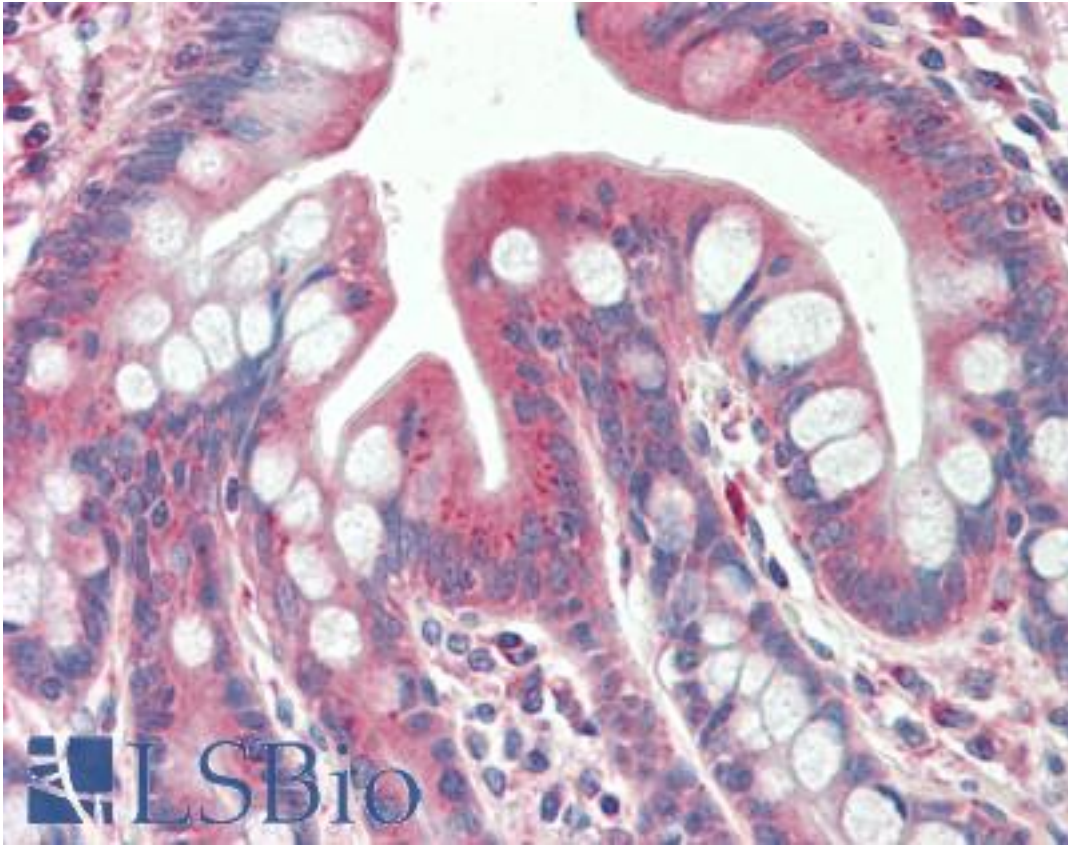


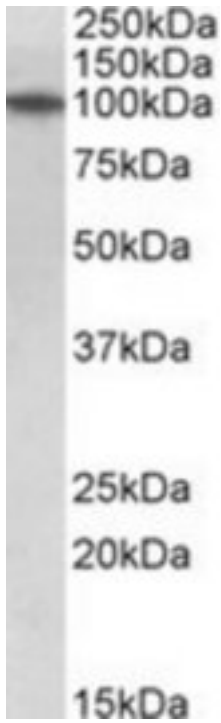
| TXNDC11 Goat anti-Human Polyclonal (Internal) Antibody - LS-B10473 - LSBio |  |
|--|--|
| <b>CatalogID:</b>  | LS-B10473  |
| <b>Validation:</b>   | This antibody replaces catalog number LS-C139826. It has been validated for use in the following assays: IHC-P.  |
| <b>Target:</b>   | Thioredoxin Domain Containing 11 (TXNDC11)   |
| <b>Synonyms:</b>   | TXNDC11 Antibody, EF-hand binding protein 1 Antibody, EF-hand-binding protein 1 Antibody, EFP1 Antibody  |
| <b>Host</b>  | TXNDC11 antibody was produced in Goat  |
| <b>Clonality:</b>  | Polyclonal   |
| <b>Immunogen Species:</b>  | TXNDC11 antibody was raised against Human  |
| <b>Antigen Type:</b>   | Synthetic peptide  |
| <b>Immunogen:</b>  | TXNDC11 antibody was raised against synthetic peptide C-QLDYAEYVRRDSE from an internal region of human TXNDC11 (NP_056998.4). Percent identity by BLAST analysis: Human, Gorilla, Gibbon (100%); Marmoset, Panda, Dog, Horse, Opossum (92%); Monkey, Elephant, Bat, Bovine, Xenopus (85%). |
| <b>Specificity:</b>  | Human TXNDC11.   |
| <b>Epitope:</b>  | Internal   |
| <b>Reactivity:</b>   | Human, Gorilla, Gibbon   |
| <b>Purification:</b>   | Immunoaffinity purified  |
| <b>Presentation:</b>   | Tris-buffered saline, pH 7.3, 0.5% BSA, 0.02% sodium azide   |
| <b>Recommended Storage:</b>  | Store at -20°C. Minimize freezing and thawing.   |
| <b>Usage Summary:</b>  | Peptide ELISA: antibody detection limit dilution 1:16000. Western blot: Approx 100kD band observed in Human Spleen and Thymus lysates (calculated MW of 108kD according to NP_056998.4). Recommended concentration: 1-3 ug/ml.   |
| <b>Uses:</b>   | IHC - Paraffin (5 µg/ml), Western blot (1 - 3 µg/ml), ELISA (1:16000) (Optimal dilution to be determined by the researcher)  |
| <b>Size:</b>   | 50 µg  |
| <b>Concentration:</b>  | 0.5 mg/ml  |

**Immunohistochemistry Image:**



Human, Small intestine: Formalin-Fixed Paraffin-Embedded (FFPE)

**Western Blot Image:**



TXNDC11 antibody (1 ug/ml) staining of Human Thymus lysate (35 ug protein/ml in RIPA buffer). Primary incubation was 1 hour. Detected by chemiluminescence.

**Requested From:**

Japan

Laboratory Reagent For In Vitro Research Use Only

Not for resale without prior written consent from LifeSpan BioSciences, Inc.

Created on 9/23/2014

© 2014 LifeSpan BioSciences