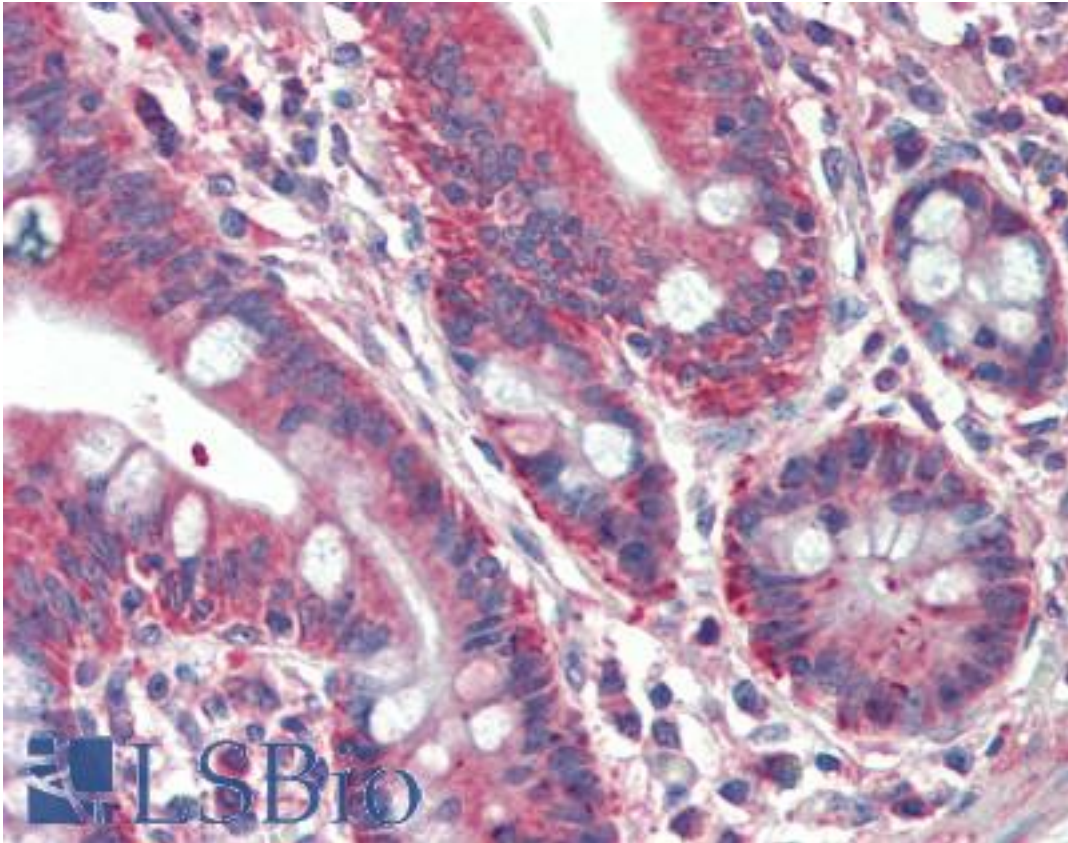


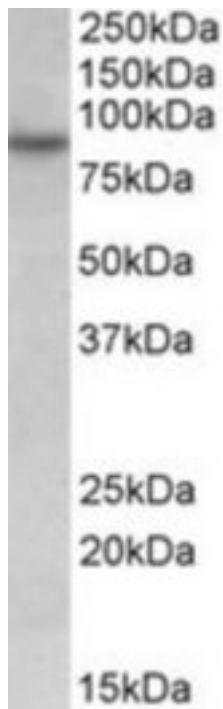
RUFY1 Goat anti-Human Polyclonal (Internal) Antibody - LS-B10465 - LSBio	
<b>CatalogID:</b>	LS-B10465
<b>Validation:</b>	This antibody replaces catalog number LS-C139714. It has been validated for use in the following assays: IHC-P.
<b>Target:</b>	RUN and FYVE domain containing 1 (RUFY1)
<b>Synonyms:</b>	RUFY1 Antibody, FYVE-finger protein EIP1 Antibody, RABIP4 Antibody, La-binding protein 1 Antibody, Rab4-interacting protein Antibody, ZFYVE12 Antibody
<b>Host</b>	RUFY1 antibody was produced in Goat
<b>Clonality:</b>	Polyclonal
<b>Immunogen Species:</b>	RUFY1 antibody was raised against Human
<b>Antigen Type:</b>	Synthetic peptide
<b>Immunogen:</b>	RUFY1 antibody was raised against synthetic peptide C-QKNEAITSFEGKT from an internal region of human RUFY1 (NP_079434.3; NP_001035541.1). Percent identity by BLAST analysis: Human, Gibbon, Marmoset, Elephant, Rabbit (100%); Mouse, Hamster (92%); Rat, Panda, Pig, Opossum, Chicken, Platypus, Lizard (85%).
<b>Specificity:</b>	Human RUFY1. This antibody is expected to recognize both reported isoforms (NP_079434.3; NP_001035541.1). Reported variants represent identical protein: NP_001035542.1, NP_001035541.1.
<b>Epitope:</b>	Internal
<b>Reactivity:</b>	Human, Gibbon, Monkey, Rabbit
<b>Purification:</b>	Immunoaffinity purified
<b>Presentation:</b>	Tris-buffered saline, pH 7.3, 0.5% BSA, 0.02% sodium azide
<b>Recommended Storage:</b>	Store at -20°C. Minimize freezing and thawing.
<b>Usage Summary:</b>	Peptide ELISA: antibody detection limit dilution 1:32000. Western blot: Approx 85kD band observed in lysates of cell line HeLa (calculated MW of 79.8kD according to NP_079434.3). Recommended concentration: 0.05-0.2 ug/ml.
<b>Uses:</b>	IHC - Paraffin (5 µg/ml), Western blot (0.05 - 0.2 µg/ml), ELISA (1:32000) (Optimal dilution to be determined by the researcher)
<b>Size:</b>	50 µg
<b>Concentration:</b>	0.5 mg/ml

**Immunohistochemistry Image:**



Human, Small intestine: Formalin-Fixed Paraffin-Embedded (FFPE)

**Western Blot Image:**



RUFY1 antibody (0.05 ug/ml) staining of HeLa lysate (35 ug protein/ml in RIPA buffer).  
Primary incubation was 1 hour. Detected by chemiluminescence.

**Requested From:**

Japan

Laboratory Reagent For In Vitro Research Use Only

Not for resale without prior written consent from LifeSpan BioSciences, Inc.

Created on 9/23/2014

© 2014 LifeSpan BioSciences