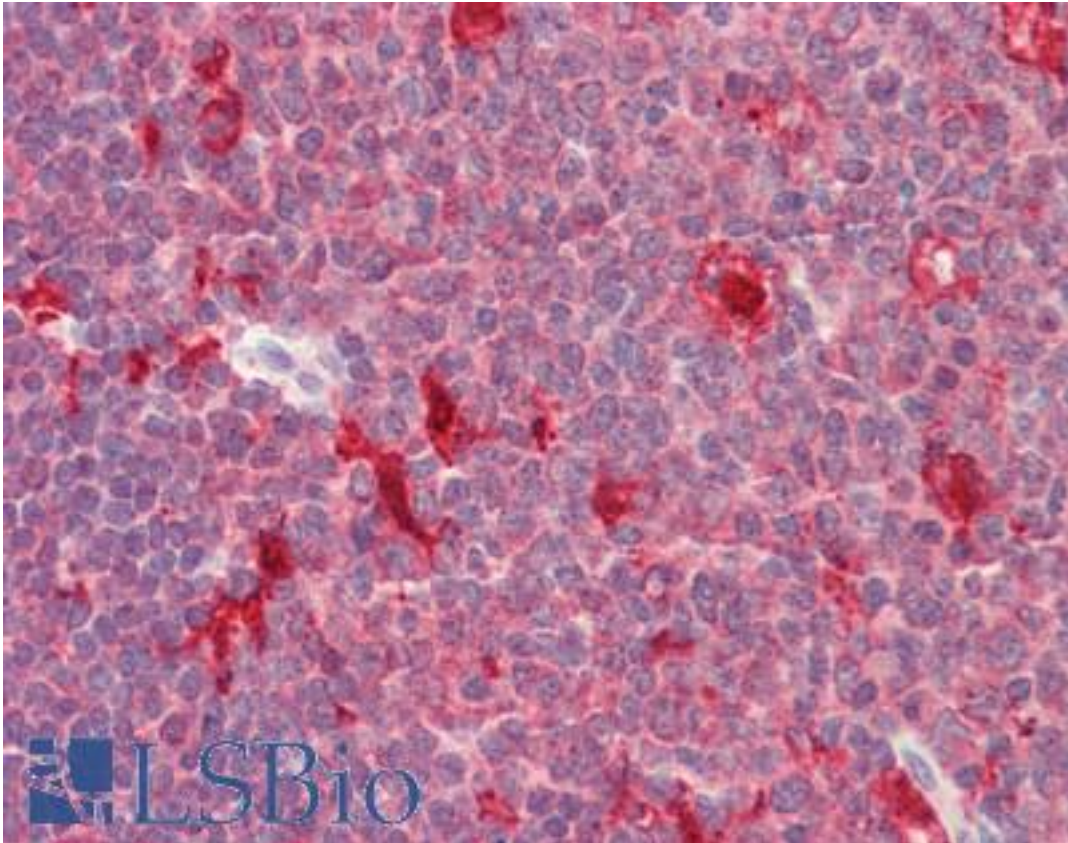


| PDXP Goat anti-Human Polyclonal (C-Terminus) Antibody - LS-B10464 - LSBio | |
|---|---|
| CatalogID: | LS-B10464 |
| Validation: | This antibody replaces catalog number LS-C154801. It has been validated for use in the following assays: IHC-P. |
| Target: | pyridoxal (pyridoxine, vitamin B6) phosphatase (PDXP) |
| Synonyms: | PDXP Antibody, DJ37E16.5 Antibody, Chronophin Antibody, CIN Antibody, PLP Antibody, PLP phosphatase Antibody, PLPP Antibody |
| Host | PDXP antibody was produced in Goat |
| Clonality: | Polyclonal |
| Immunogen Species: | PDXP antibody was raised against Human |
| Antigen Type: | Synthetic peptide |
| Immunogen: | PDXP antibody was raised against synthetic peptide C-QHDLVPHYVVEs from the C-terminus of human PDXP (NP_064711.1). Percent identity by BLAST analysis: Human, Chimpanzee, Gorilla, Monkey, Galago, Marmoset, Rat, Bat, Dog, Bovine, Panda, Horse, Rabbit (100%); Mouse, Guinea pig (92%). |
| Specificity: | Human PDXP. |
| Epitope: | C-Terminus |
| Reactivity: | Human, Chimpanzee, Gorilla, Monkey, Rat, Bat, Bovine, Dog, Horse, Rabbit |
| Purification: | Immunoaffinity purified |
| Presentation: | Tris-buffered saline, pH 7.3, 0.5% BSA, 0.02% sodium azide |
| Recommended Storage: | Store at -20°C. Minimize freezing and thawing. |
| Usage Summary: | Peptide ELISA: antibody detection limit dilution 1:64000. Western blot: Approx 32kD band observed in Human and Rat Heart lysates (calculated MW of 31.7kD according to NP_064711.1). Recommended concentration: 0.1-0.3 ug/ml. |
| Uses: | IHC - Paraffin (5 µg/ml), Western blot (0.1 - 0.3 µg/ml), ELISA (1:64000) (Optimal dilution to be determined by the researcher) |
| Size: | 50 µg |
| Concentration: | 0.5 mg/ml |

Immunohistochemistry Image:



Human, Tonsil: Foramlin-Fixed Paraffin-Embedded (FFPE)

Western Blot Image:



PDXP antibody (0.1 ug/ml) staining of Human Heart lysate (35 ug protein in RIPA buffer).
Primary incubation was 1 hour. Detected by chemiluminescence.

Requested From:

Japan

Laboratory Reagent For In Vitro Research Use Only

Not for resale without prior written consent from LifeSpan BioSciences, Inc.

Created on 9/23/2014

© 2014 LifeSpan BioSciences