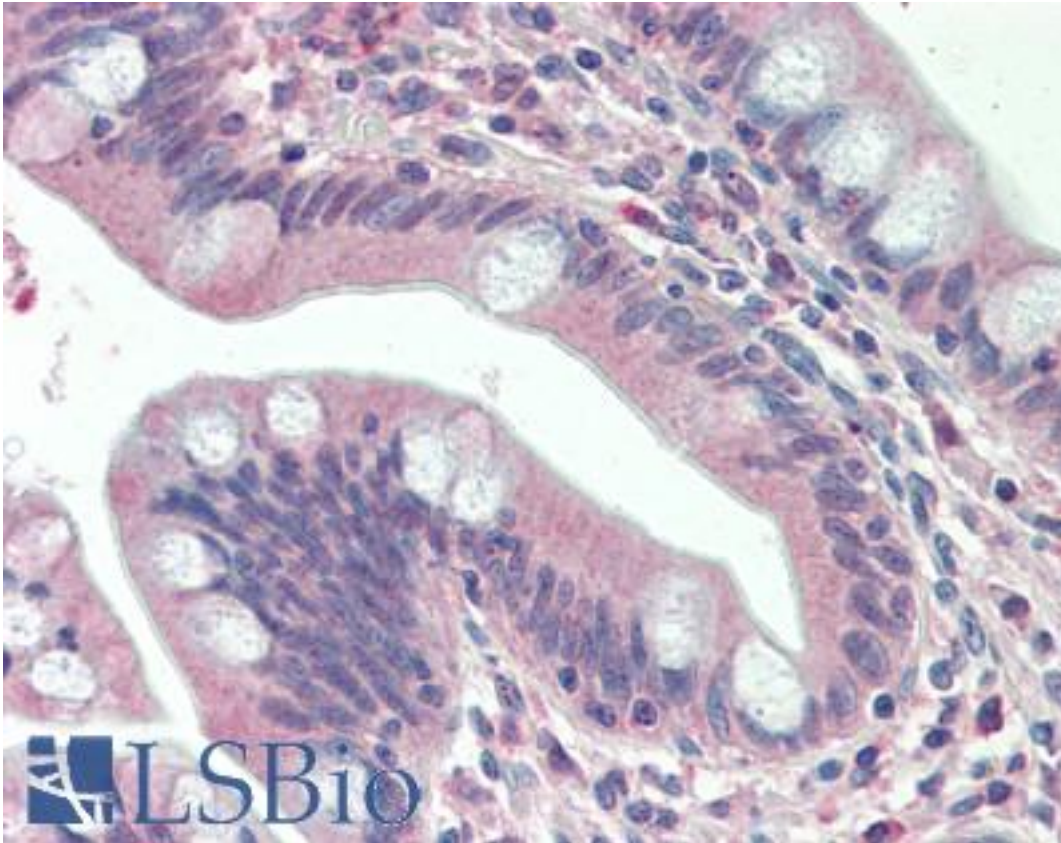


SLAMF8 Goat anti-Human Polyclonal (aa268-279) Antibody - LS-B10463 - LSBio	
CatalogID:	LS-B10463
Validation:	This antibody replaces catalog number LS-C205060. It has been validated for use in the following assays: IHC-P.
Target:	SLAM family member 8 (SLAMF8)
Synonyms:	SLAMF8 Antibody, BCM-like membrane protein Antibody, CD353 Antibody, CD353 antigen Antibody, SBBI42 Antibody, SLAM family member 8 Antibody, BLAME Antibody
Host	SLAMF8 antibody was produced in Goat
Clonality:	Polyclonal
Immunogen Species:	SLAMF8 antibody was raised against Human
Antigen Type:	Synthetic peptide
Immunogen:	SLAMF8 antibody was raised against synthetic peptide C-HADRVGPETENP from the C-terminus of human SLAMF8 (NP_064510.1). Percent identity by BLAST analysis: Human (100%); Chimpanzee, Gibbon, Monkey (92%); Horse (83%); Rat (75%); Mouse (67%).
Specificity:	Human SLAMF8
Epitope:	aa268-279
Reactivity:	Human
Purification:	Immunoaffinity purified
Presentation:	Tris saline, pH 7.3, 0.5% BSA, 0.02% sodium azide
Recommended Storage:	Store at -20°C. Minimize freezing and thawing.
Usage Summary:	Peptide ELISA: antibody detection limit dilution 1:32000. Western blot: In transfected HEK293 transiently expressing Human SLAMF8 a band of approx. 45kD is observed. This band is not observed in the non-transfected HEK293. The calculated molecular size is 31.7kD according to NP_064510.1. Recommended concentration, 0.01-0.03 ug/ml.
Uses:	IHC - Paraffin (5 µg/ml), Western blot (0.01 - 0.03 µg/ml), ELISA (1:32000) (Optimal dilution to be determined by the researcher)
Size:	50 µg
Concentration:	0.5 mg/ml

Immunohistochemistry Image:



Human, Small intestine: Formalin-Fixed Paraffin-Embedded (FFPE)

Requested From:

Japan

Laboratory Reagent For In Vitro Research Use Only

Not for resale without prior written consent from LifeSpan BioSciences, Inc.

Created on 9/23/2014

© 2014 LifeSpan BioSciences