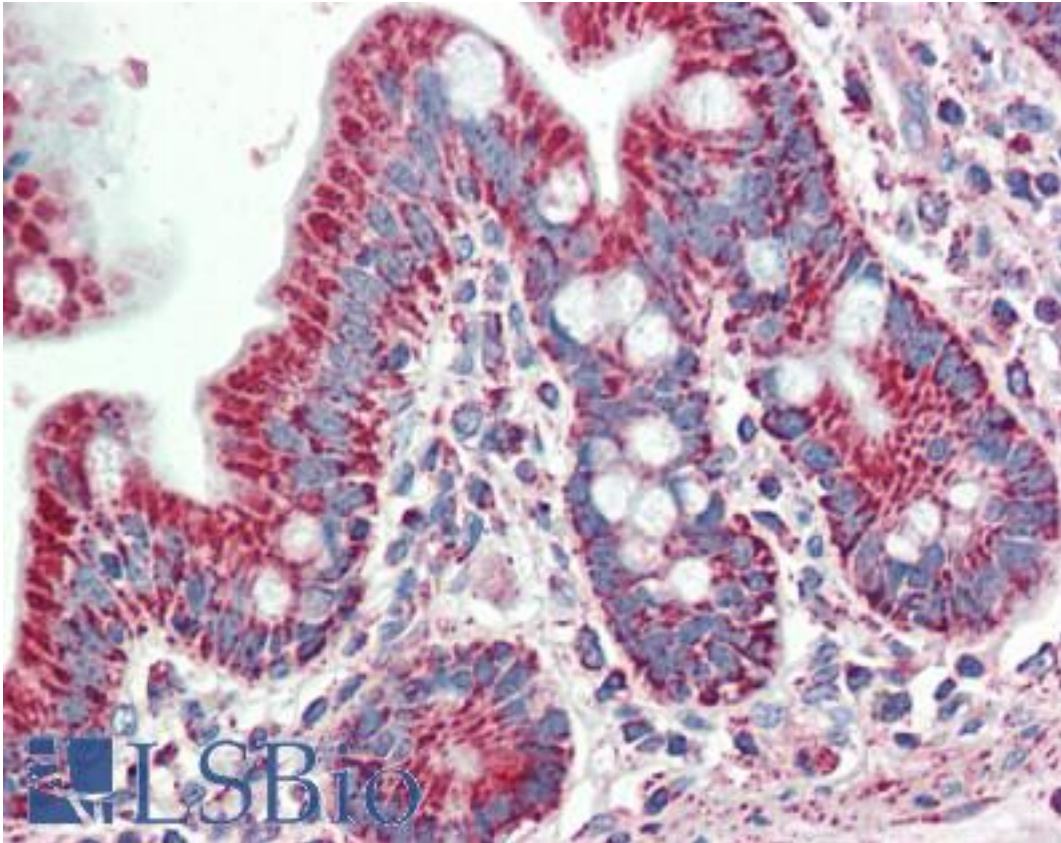


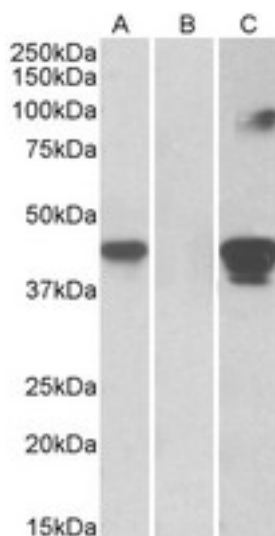
| SLAMF8 Goat anti-Human Polyclonal (Internal) Antibody - LS-B10462 - LSBio | |
|---|---|
| CatalogID: | LS-B10462 |
| Validation: | This antibody replaces catalog number LS-C186602. It has been validated for use in the following assays: IHC-P. |
| Target: | SLAM family member 8 (SLAMF8) |
| Synonyms: | SLAMF8 Antibody, BCM-like membrane protein Antibody, CD353 Antibody, CD353 antigen Antibody, SBBI42 Antibody, SLAM family member 8 Antibody, BLAME Antibody |
| Host | SLAMF8 antibody was produced in Goat |
| Clonality: | Polyclonal |
| Immunogen Species: | SLAMF8 antibody was raised against Human |
| Antigen Type: | Synthetic peptide |
| Immunogen: | SLAMF8 antibody was raised against synthetic peptide C-TLYHSRFLGRAQ from an internal region of human SLAMF8 (NP_064510.1). Percent identity by BLAST analysis: Human, Chimpanzee, Orangutan, Gibbon, Monkey, Marmoset, Bovine, Cat, Horse (100%); Galago, Mouse, Rat, Ferret, Panda, Pig (92%); Elephant (83%). |
| Specificity: | Human SLAMF8 |
| Epitope: | Internal |
| Reactivity: | Human, Chimpanzee, Orangutan, Gibbon, Monkey, Bovine, Horse |
| Purification: | Immunoaffinity purified |
| Presentation: | Tris-buffered saline, pH 7.3, 0.5% BSA, 0.02% sodium azide |
| Recommended Storage: | Store at -20°C. Minimize freezing and thawing. |
| Usage Summary: | Peptide ELISA: antibody detection limit dilution 1:8000. Western blot: In transfected HEK293 transiently expressing Human SLAMF8 (myc and DYKDDDDK tagged), a band of approx. 45kD is observed. No bands are observed in mock-transfected HEK293 and the same band is observed using anti-myc antibody. Recommended concentration, 0.5-1 ug/ml. |
| Uses: | IHC - Paraffin (5 µg/ml), Western blot (0.5 - 1 µg/ml), ELISA (1:8000) (Optimal dilution to be determined by the researcher) |
| Size: | 50 µg |
| Concentration: | 0.5 mg/ml |

Immunohistochemistry Image:



Human, Small intestine: Formalin-Fixed Paraffin-Embedded (FFPE)

Western Blot Image:



SLAMF8 antibody HEK293 lysate (10 ug protein in RIPA buffer) overexpressing Human SLAMF8 with C-terminal MYC tag probed with (1 ug/ml) in Lane A and probed with anti-MYC Tag (1/1000) in lane C. Mock-transfected HEK293 probed with (1 ug/ml) in Lane B. Primary incubations were for 1 hour. Detected by chemiluminescence.

Requested From:

Japan

Laboratory Reagent For In Vitro Research Use Only

Not for resale without prior written consent from LifeSpan BioSciences, Inc.

Created on 9/23/2014

© 2014 LifeSpan BioSciences