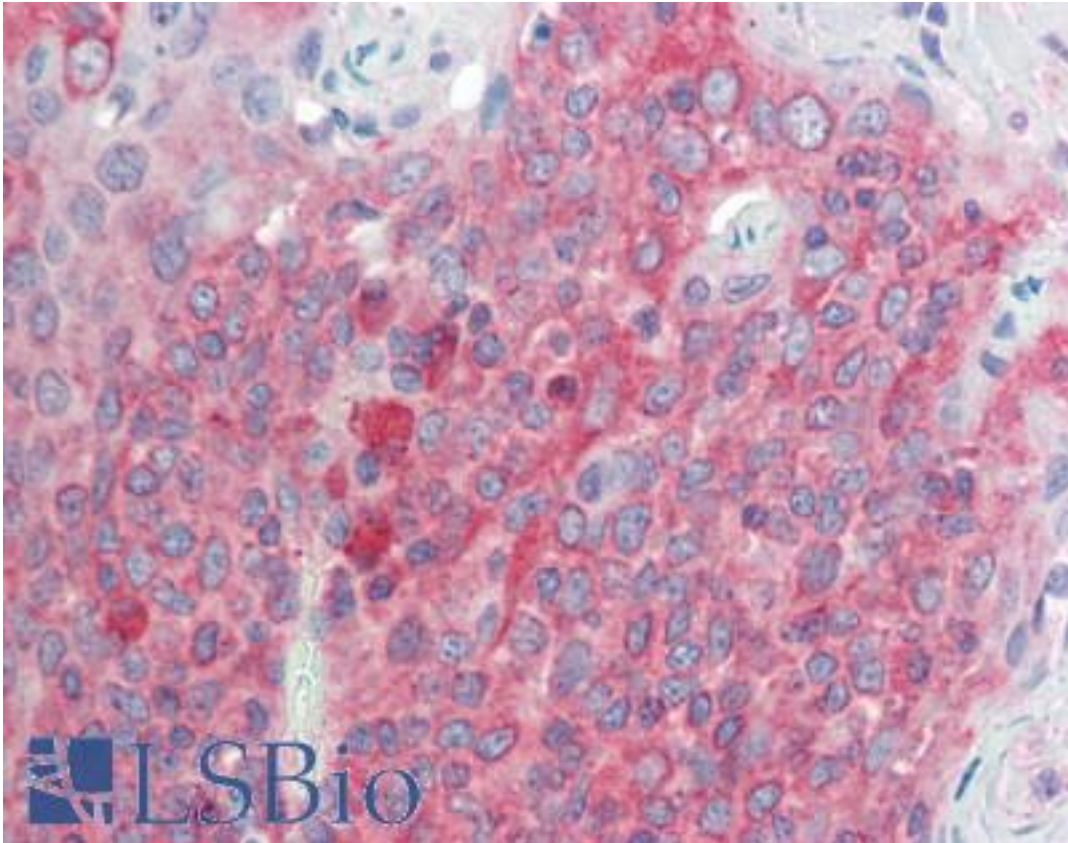


TMEM205 Goat anti-Human Polyclonal (Internal) Antibody - LS-B10461 - LSBio	
CatalogID:	LS-B10461
Validation:	This antibody replaces catalog number LS-C139679. It has been validated for use in the following assays: IHC-P.
Target:	transmembrane protein 205 (TMEM205)
Synonyms:	TMEM205 Antibody, Transmembrane protein 205 Antibody, UNQ501 Antibody, MBC3205 Antibody
Host	TMEM205 antibody was produced in Goat
Clonality:	Polyclonal
Immunogen Species:	TMEM205 antibody was raised against Human
Antigen Type:	Synthetic peptide
Immunogen:	TMEM205 antibody was raised against synthetic peptide C-PDPYRQLREK from an internal region of human TMEM205 (NP_212133.1). Percent identity by BLAST analysis: Human, Orangutan, Gibbon, Monkey, Marmoset, Rat, Hamster (100%); Gorilla, Mouse, Rabbit (90%); Bat, Dog, Shewanella (80%).
Specificity:	Human TMEM205. Reported variants represent identical protein: NP_940938.1, NP_212133.1, NP_001138888.1
Epitope:	Internal
Reactivity:	Human, Orangutan, Gibbon, Monkey, Rat, Hamster
Purification:	Immunoaffinity purified
Presentation:	Tris-buffered saline, pH 7.3, 0.5% BSA, 0.02% sodium azide
Recommended Storage:	Store at -20°C. Minimize freezing and thawing.
Usage Summary:	Peptide ELISA: antibody detection limit dilution 1:16000. Western blot: Approx 22kD band observed in Human Pancreas lysates (calculated MW of 21.2kD according to NP_212133.1). Recommended concentration: 0.03-0.1 ug/ml.
Uses:	IHC - Paraffin (5 µg/ml), Western blot (0.03 - 0.1 µg/ml), ELISA (1:16000) (Optimal dilution to be determined by the researcher)
Size:	50 µg
Concentration:	0.5 mg/ml

Immunohistochemistry Image:



Human, Tonsil: Formalin-Fixed, Paraffin-Embedded (FFPE)

Requested From:

Japan

Laboratory Reagent For In Vitro Research Use Only

Not for resale without prior written consent from LifeSpan BioSciences, Inc.

Created on 9/23/2014

© 2014 LifeSpan BioSciences