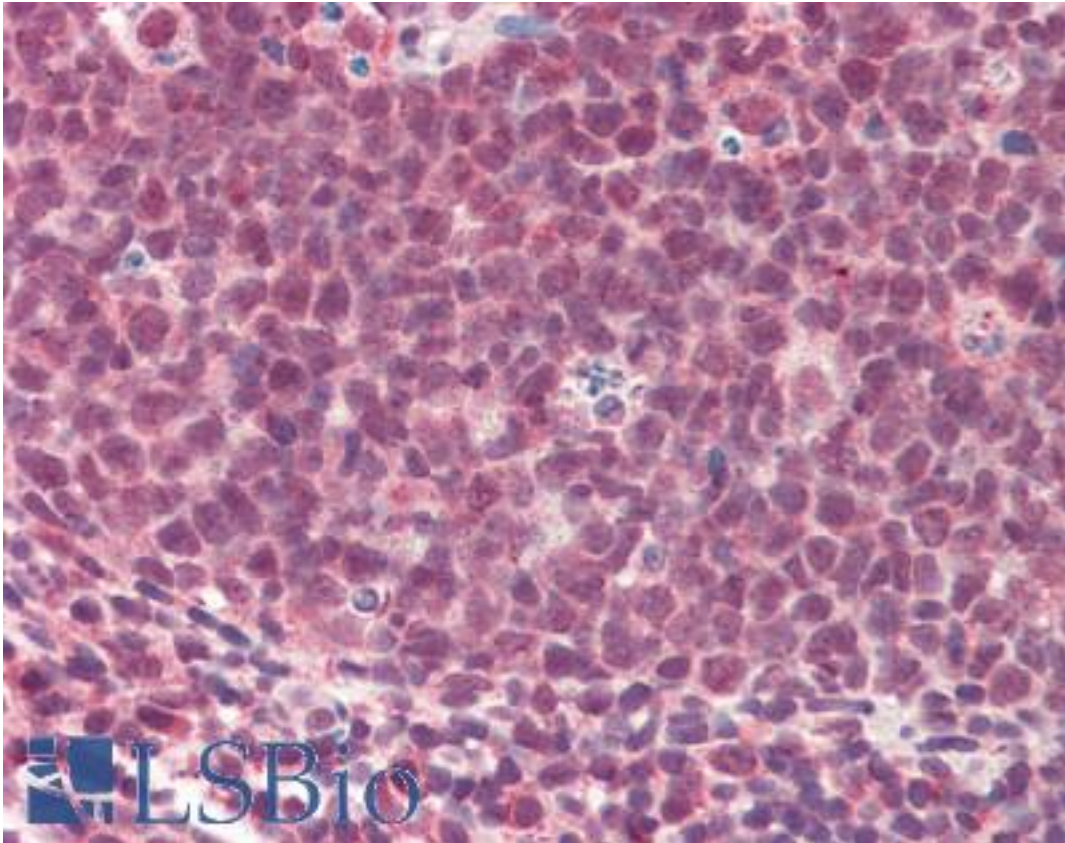


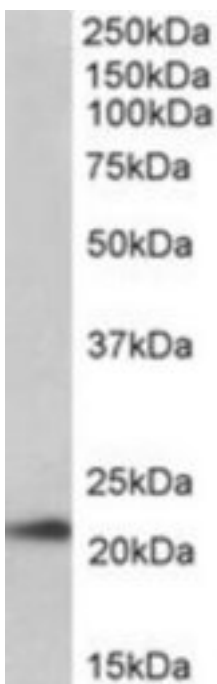
| TMEM205 Goat anti-Human Polyclonal (Internal) Antibody - LS-B10460 - LSBio | |
|--|---|
| CatalogID: | LS-B10460 |
| Validation: | This antibody replaces catalog number LS-C139678. It has been validated for use in the following assays: IHC-P. |
| Target: | transmembrane protein 205 (TMEM205) |
| Synonyms: | TMEM205 Antibody, Transmembrane protein 205 Antibody, UNQ501 Antibody, MBC3205 Antibody |
| Host | TMEM205 antibody was produced in Goat |
| Clonality: | Polyclonal |
| Immunogen Species: | TMEM205 antibody was raised against Human |
| Antigen Type: | Synthetic peptide |
| Immunogen: | TMEM205 antibody was raised against synthetic peptide C-QLREKDPKYS from an internal region of human TMEM205 (NP_212133.1). Percent identity by BLAST analysis: Human, Gorilla, Orangutan, Gibbon, Monkey, Marmoset, Rat (100%); Mouse, Hamster, Bat, Platypus (90%); Panda, Dog, Bovine, Rabbit, Pig (80%). |
| Specificity: | Human TMEM205. Reported variants represent identical protein: NP_940938.1, NP_212133.1, NP_001138888.1. |
| Epitope: | Internal |
| Reactivity: | Human, Gorilla, Orangutan, Gibbon, Monkey, Rat |
| Purification: | Immunoaffinity purified |
| Presentation: | Tris-buffered saline, pH 7.3, 0.5% BSA, 0.02% sodium azide |
| Recommended Storage: | Store at -20°C. Minimize freezing and thawing. |
| Usage Summary: | Peptide ELISA: antibody detection limit dilution 1:16000. Western blot: Approx 22kD band observed in Human and Mouse Pancreas lysates (calculated MW of 21.2kD according to NP_212133.1). Recommended concentration: 0.03-0.1 ug/ml. |
| Uses: | IHC - Paraffin (5 µg/ml), Western blot (0.03 - 0.1 µg/ml), ELISA (1:16000) (Optimal dilution to be determined by the researcher) |
| Size: | 50 µg |
| Concentration: | 0.5 mg/ml |

Immunohistochemistry Image:



Human, Tonsil: Formalin-Fixed, Paraffin-Embedded (FFPE)

Western Blot Image:



TMEM205 antibody (0.03 ug/ml) staining of Human Pancreas lysate (35 ug protein/ml in RIPA buffer). Primary incubation was 1 hour. Detected by chemiluminescence.

| | |
|--|-------|
| Requested From: | Japan |
| Laboratory Reagent For In Vitro Research Use Only | |
| Not for resale without prior written consent from LifeSpan BioSciences, Inc. | |
| Created on 9/23/2014 | |
| © 2014 LifeSpan BioSciences | |