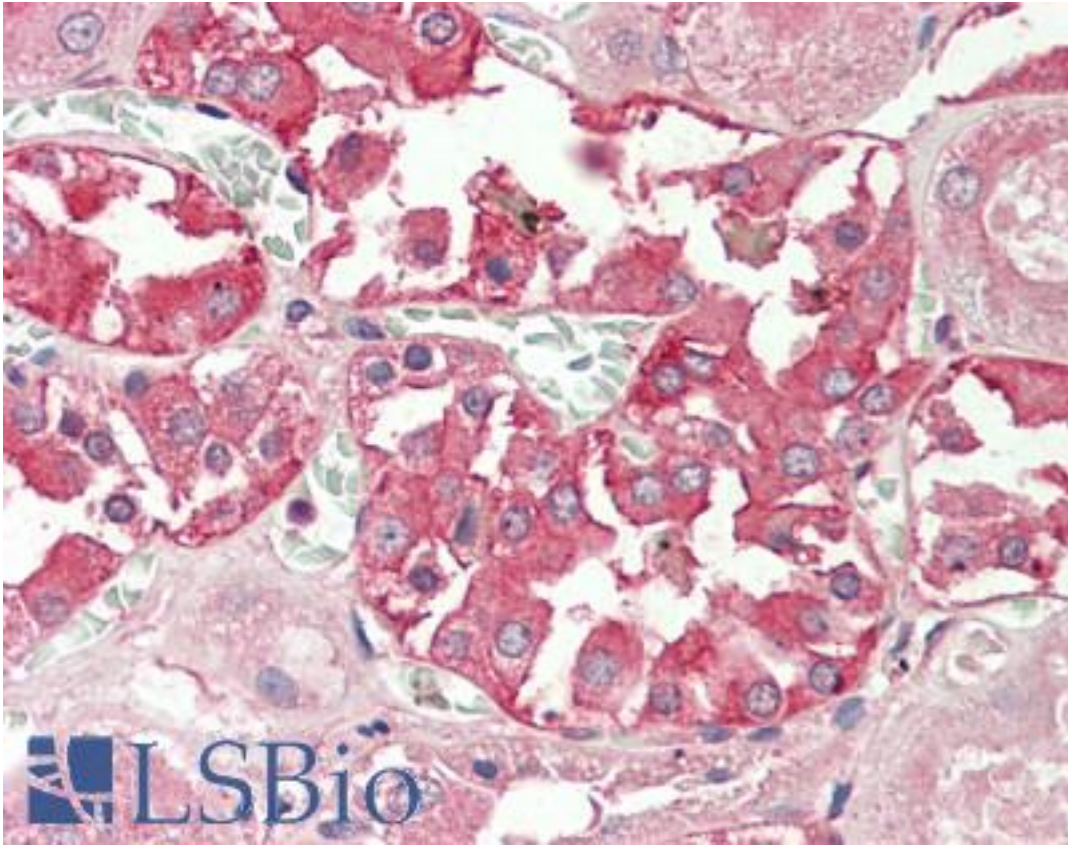


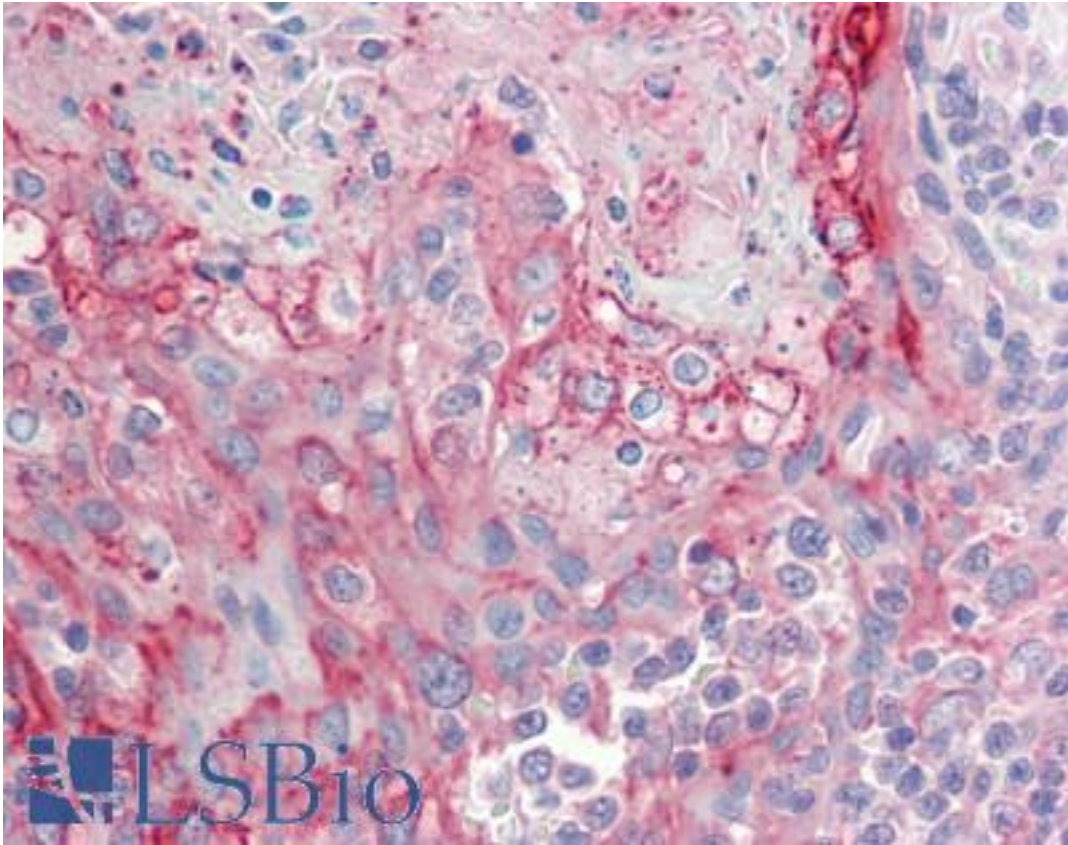
RHCG Goat anti-Human Polyclonal (Internal) Antibody - LS-B10458 - LSBio	
CatalogID:	LS-B10458
Validation:	This antibody replaces catalog number LS-C139649. It has been validated for use in the following assays: IHC-P.
Target:	Rh family, C glycoprotein (RHCG)
Synonyms:	RHCG Antibody, Ammonium transporter Rh type C Antibody, C15orf6 Antibody, CDRC2 Antibody, Rh family, C glycoprotein Antibody, RHGK Antibody, SLC42A3 Antibody, Tumor-related protein DRC2 Antibody, Rh family type C glycoprotein Antibody, Rh type C glycoprotein Antibody, PDRC2 Antibody, Rh glycoprotein kidney Antibody
Host	RHCG antibody was produced in Goat
Clonality:	Polyclonal
Immunogen Species:	RHCG antibody was raised against Human
Antigen Type:	Synthetic peptide
Immunogen:	RHCG antibody was raised against synthetic peptide C-ERQNSVYQSD from an internal region of human RHCG (NP_057405.1). Percent identity by BLAST analysis: Human, Chimpanzee, Gorilla, Orangutan (100%); Monkey, Dog, Pig, Opossum, Platypus (80%).
Specificity:	Human RHCG.
Epitope:	Internal
Reactivity:	Human, Chimpanzee, Gorilla, Orangutan
Purification:	Immunoaffinity purified
Presentation:	Tris-buffered saline, pH 7.3, 0.5% BSA, 0.02% sodium azide
Recommended Storage:	Store at -20°C. Minimize freezing and thawing.
Usage Summary:	Peptide ELISA: antibody detection limit dilution 1:16000. Western blot: Approx 60kD band observed in Human Testis lysates (calculated MW of 53.2kD according to NP_057405.1). The observed molecular weight corresponds to earlier findings in literature with different antibodies (Liu et al, J Biol Chem. 2000 Aug 18;275(33):25641-51;PMID: 10852913). Recommended concentration: 1-3 ug/ml.
Uses:	IHC - Paraffin (5 µg/ml), Western blot (1 - 3 µg/ml), ELISA (1:16000) (Optimal dilution to be determined by the researcher)
Size:	50 µg
Concentration:	0.5 mg/ml

Immunohistochemistry Image:



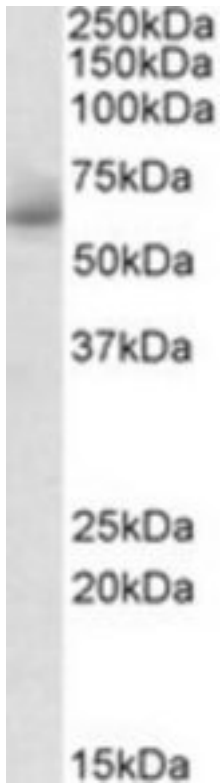
Human Kidney: Formalin-Fixed, Paraffin-Embedded (FFPE)

Immunohistochemistry Image:



Human Tonsil: Formalin-Fixed, Paraffin-Embedded (FFPE)

Western Blot Image:



RHCG antibody (1 ug/ml) staining of Human Testis lysate (35 ug protein/ml in RIPA buffer). Primary incubation was 1 hour. Detected by chemiluminescence.

Requested From:

Japan

Laboratory Reagent For In Vitro Research Use Only

Not for resale without prior written consent from LifeSpan BioSciences, Inc.

Created on 9/23/2014

© 2014 LifeSpan BioSciences