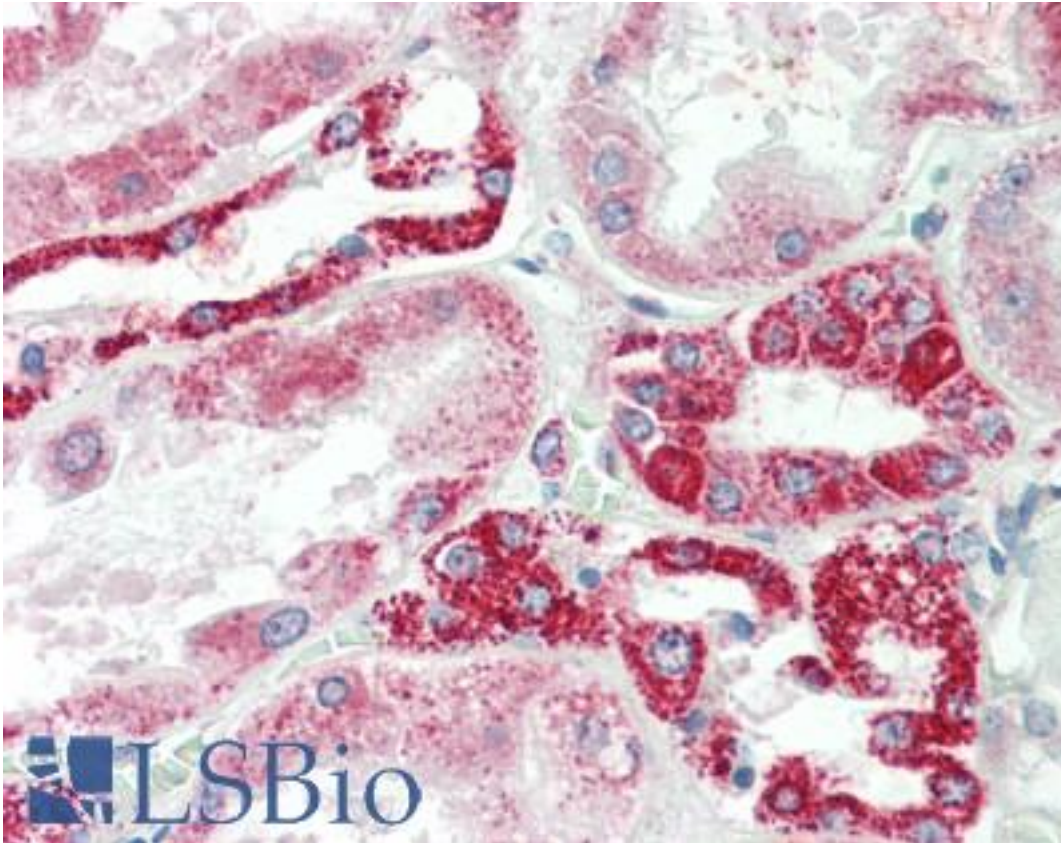


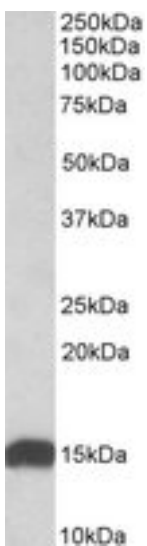
NDUFS6 Goat anti-Human Polyclonal (Internal) Antibody - LS-B10455 - LSBio	
CatalogID:	LS-B10455
Validation:	This antibody replaces catalog number LS-C139576. It has been validated for use in the following assays: IHC-P.
Target:	NADH dehydrogenase (ubiquinone) Fe-S protein 6, 13kDa (NADH-coenzyme Q reductase) (NDUFS6)
Synonyms:	NDUFS6 Antibody, Complex I 13kDa subunit A Antibody, CI-13kA Antibody, C113KDA Antibody, CI-13kD-A Antibody, Complex I-13kD-A Antibody
Host	NDUFS6 antibody was produced in Goat
Clonality:	Polyclonal
Immunogen Species:	NDUFS6 antibody was raised against Human
Antigen Type:	Synthetic peptide
Immunogen:	NDUFS6 antibody was raised against synthetic peptide C-RIRFVGRQKEVNEN from an internal region of human NDUFS6 (NP_004544.1). Percent identity by BLAST analysis: Human, Chimpanzee, Gorilla, Orangutan, Gibbon, Horse (100%); Monkey, Marmoset, Rat, Panda, Bat, Rabbit, Platypus (93%); Mouse, Hamster, Dog, Bovine, Opossum, Chicken, Lizard, Trout, Catfish, Salmon, Stickleback, Pike, Pufferfish, Zebrafish (86%).
Specificity:	Human NDUFS6.
Epitope:	Internal
Reactivity:	Human, Chimpanzee, Gorilla, Orangutan, Gibbon, Horse
Purification:	Immunoaffinity purified
Presentation:	Tris-buffered saline, pH 7.3, 0.5% BSA, 0.02% sodium azide
Recommended Storage:	Store at -20°C. Minimize freezing and thawing.
Usage Summary:	Peptide ELISA: antibody detection limit dilution 1:16000. Western blot: Approx 15kD band observed in Human Heart lysates (calculated MW of 13.7kD according to NP_004544.1). Recommended concentration: 0.01-0.03 ug/ml.
Uses:	IHC - Paraffin (5 µg/ml), Western blot (0.01 - 0.03 µg/ml), ELISA (1:16000) (Optimal dilution to be determined by the researcher)
Size:	50 µg
Concentration:	0.5 mg/ml

Immunohistochemistry Image:



Human Kidney: Formalin-Fixed, Paraffin-Embedded (FFPE)

Western Blot Image:



NDUFS6 antibody (0.01 ug/ml) staining of Human Heart lysate (35 ug protein/ml in RIPA buffer). Primary incubation was 1 hour. Detected by chemiluminescence.

Requested From:

Japan

Laboratory Reagent For In Vitro Research Use Only

Not for resale without prior written consent from LifeSpan BioSciences, Inc.

Created on 9/23/2014

© 2014 LifeSpan BioSciences