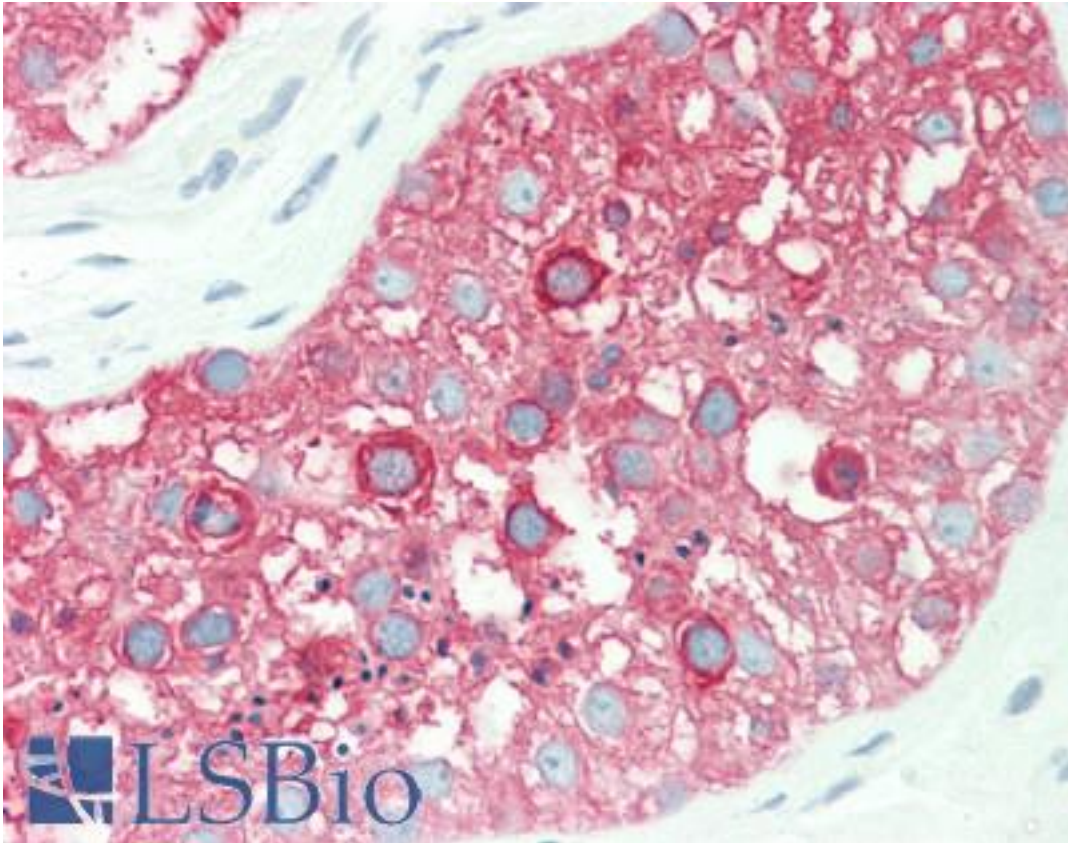


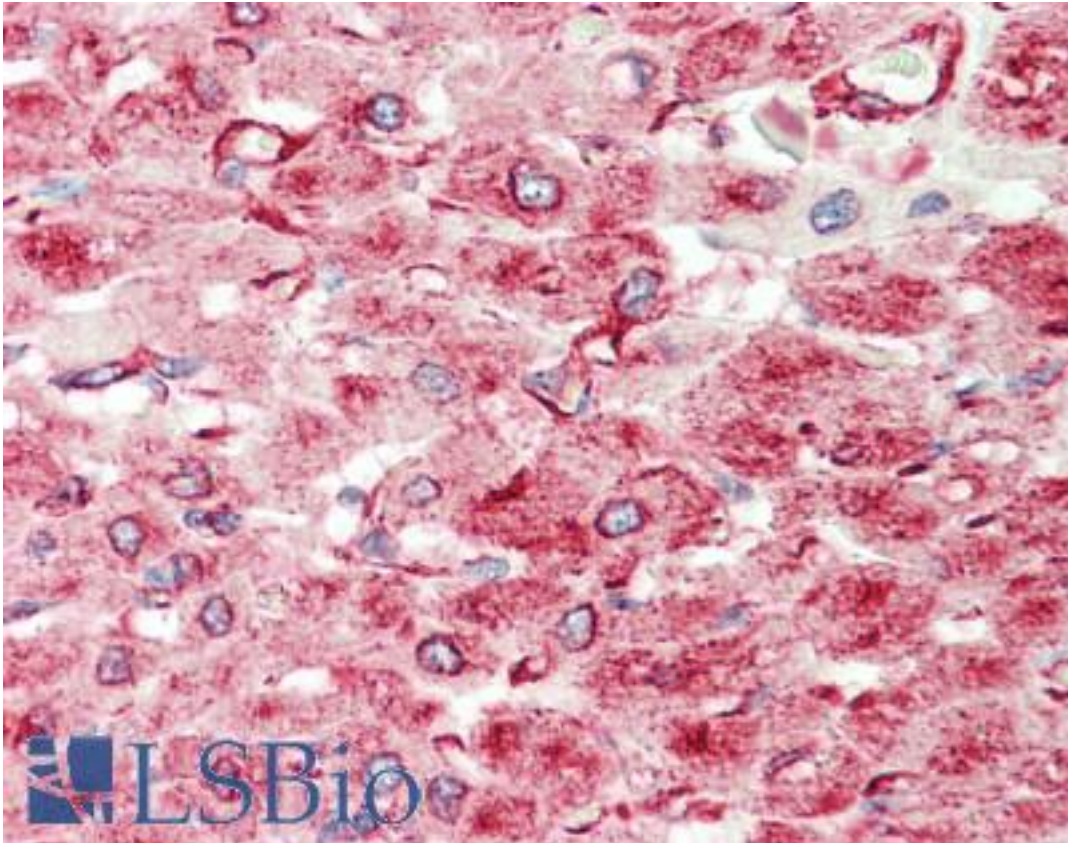
TUBA8 Mouse anti-Human Monoclonal (2D6) Antibody - LS-B10453 - LSBio	
CatalogID:	LS-B10453
Validation:	This antibody replaces catalog number LS-C169450. It has been validated for use in the following assays: IHC-P.
Target:	tubulin, alpha 8 (TUBA8)
Synonyms:	TUBA8 Antibody, Alpha-tubulin 8 Antibody, Tubulin, alpha 8 Antibody, TUBAL2 Antibody, Tubulin alpha-8 chain Antibody, Tubulin alpha chain-like 2 Antibody
Host	TUBA8 antibody was produced in Mouse
Clonality:	Monoclonal
Isotype:	IgG2b
Clone Name:	2D6
Immunogen Species:	TUBA8 antibody was raised against Human
Antigen Type:	Recombinant protein
Immunogen:	TUBA8 antibody was raised against purified recombinant fragment of human TUBA8 expressed in E. coli.
Specificity:	Human TUBA8
Reactivity:	Human, Rat
Purification:	Ascites
Presentation:	Ascites, 0.03% sodium azide
Recommended Storage:	Long term: -20°C; Short term: +4°C; Avoid freeze-thaw cycles.
Uses:	IHC (1:200 - 1:1000), IHC - Paraffin (1:50), ICC (1:200 - 1:1000), Immunofluorescence (1:1000), Western blot (1:500 - 1:2000), Flow Cytometry (1:200 - 1:400), ELISA (1:10000) (Optimal dilution to be determined by the researcher)
Size:	100 µl

Immunohistochemistry Image:



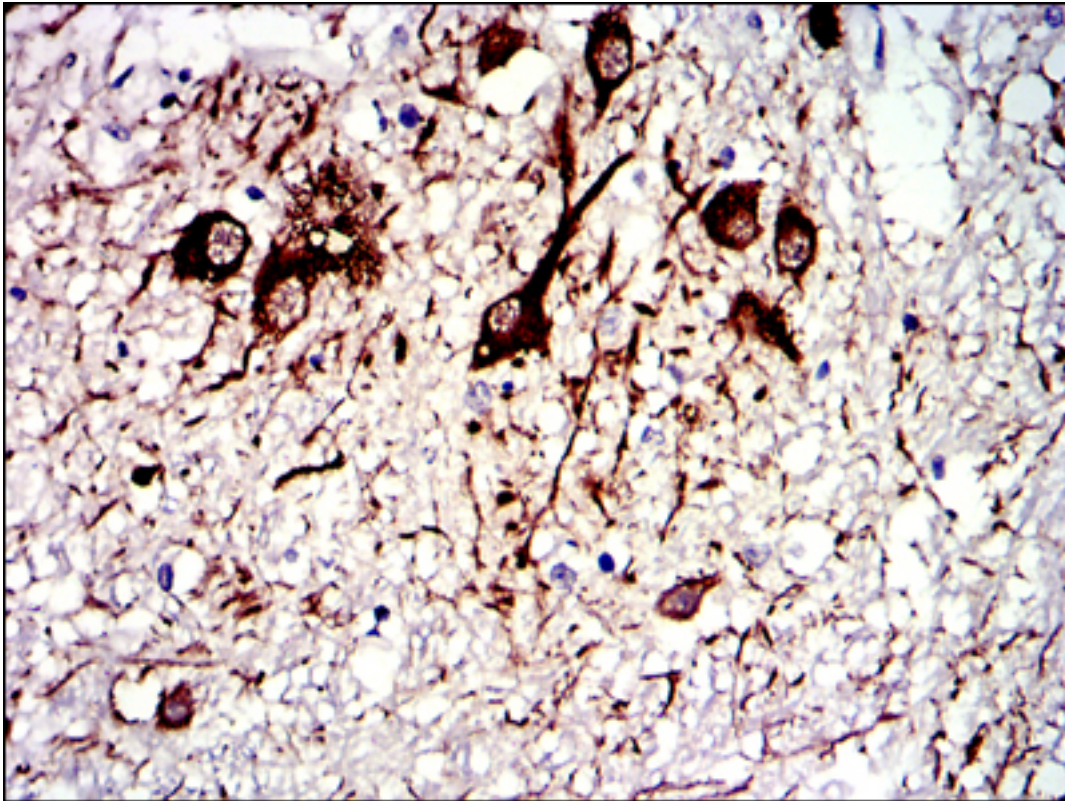
Human Testis: Formalin-Fixed, Paraffin-Embedded (FFPE)

Immunohistochemistry Image:



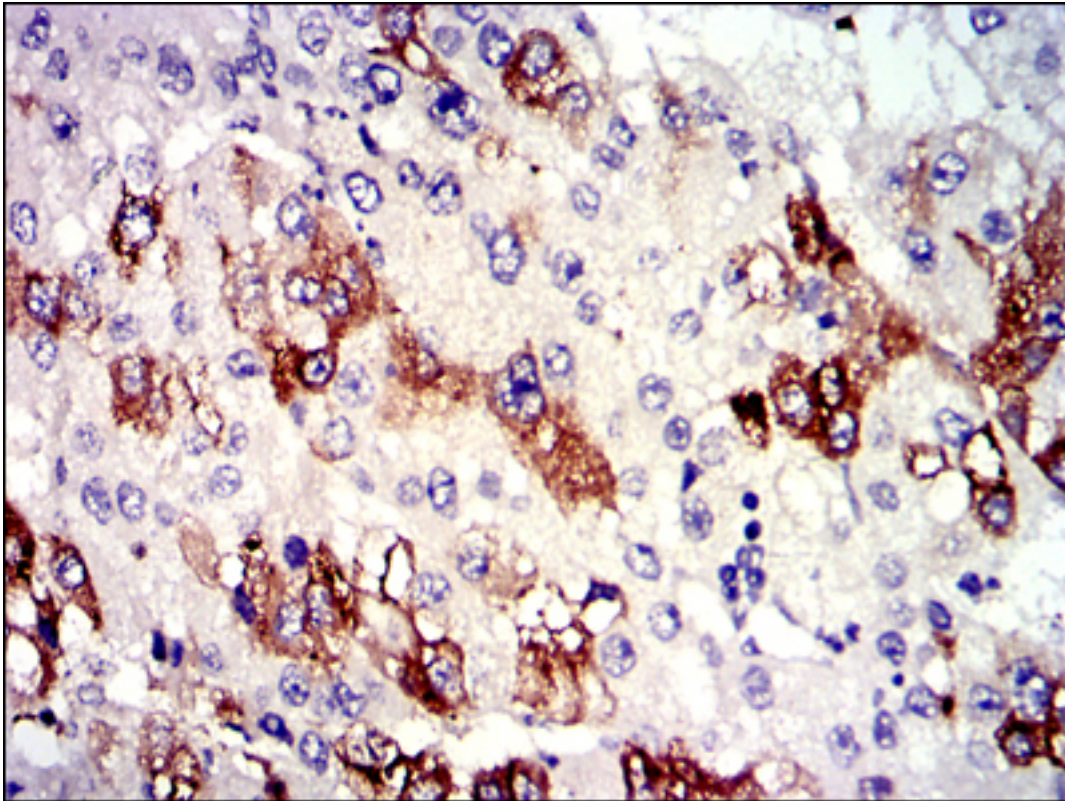
Human Heart: Formalin-Fixed, Paraffin-Embedded (FFPE)

Immunohistochemistry Image:



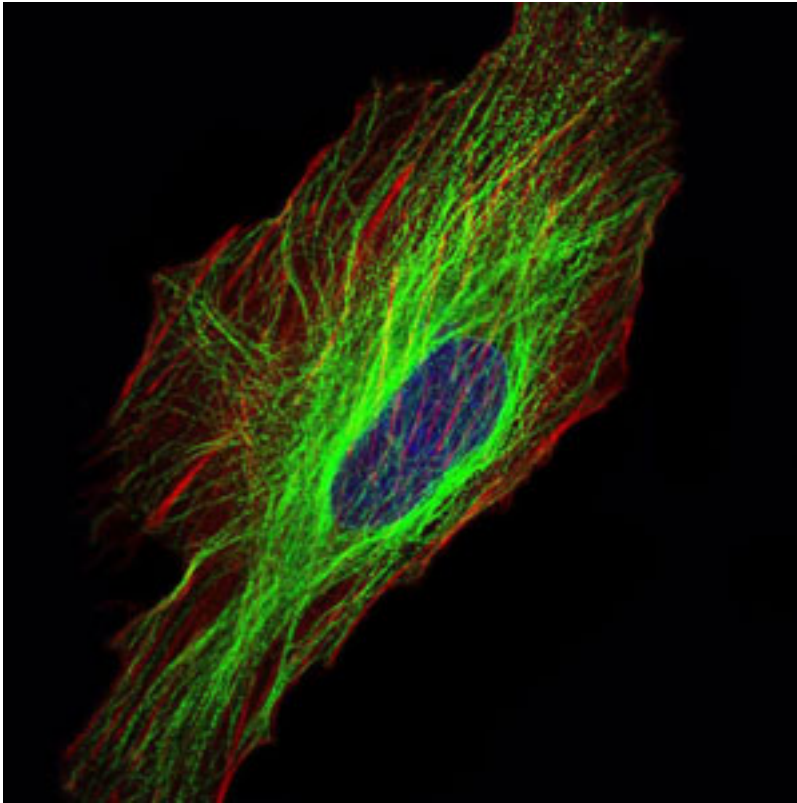
IHC of paraffin-embedded medulla oblongata tissues using TUBA8 mouse mAb with DAB staining.

Immunohistochemistry Image:



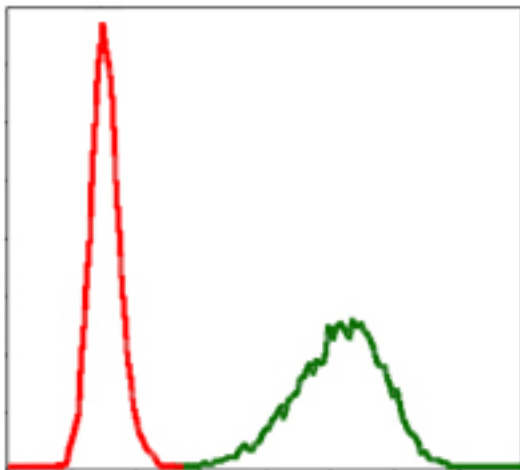
IHC of paraffin-embedded liver cancer tissues using TUBA8 mouse mAb with DAB staining.

Immunofluorescence Image:



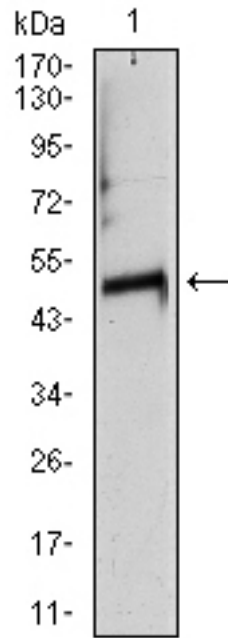
Immunofluorescence of HeLa cells using TUBA8 mouse mAb (green). Blue: DRAQ5 fluorescent DNA dye. Red: Actin filaments have been labeled with Alexa Fluor-555 phalloidin.

Flow Cytometry Image:



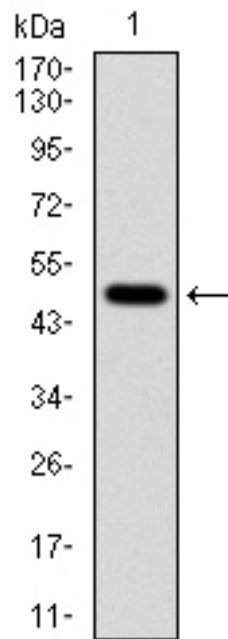
Flow cytometry of NIH/3T3 cells using TUBA8 mouse mAb (green) and negative control (red).

Western Blot Image:



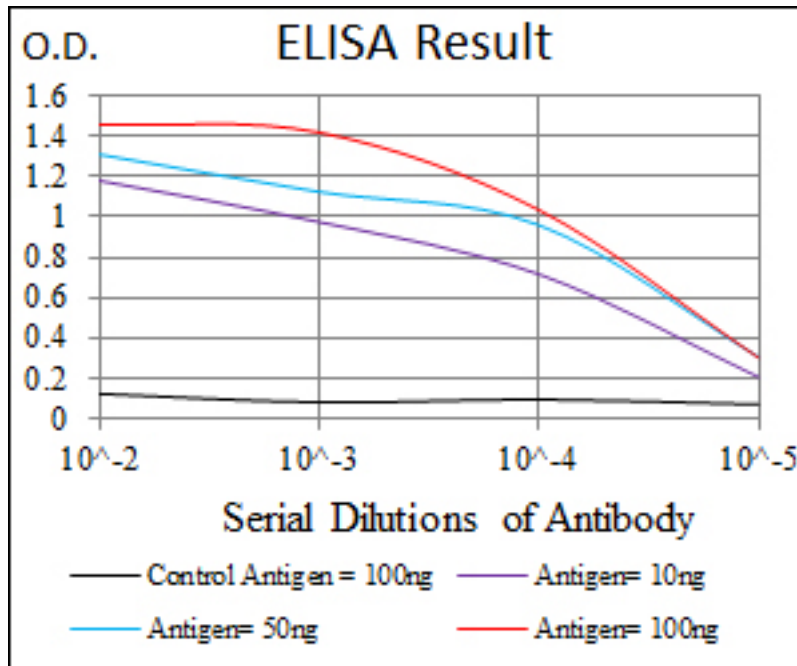
Western blot of TUBA8 mouse mAb against rat heart (1) tissue lysate.

Western Blot Image:



Western blot of TUBA8 mAb against human TUBA8 (AA: 294-449) recombinant protein.
(Expected MW is 50 kDa)

ELISA Image:



Red: Control Antigen (100ng); Purple: Antigen (10ng); Green: Antigen (50ng); Blue: Antigen (100ng);

Requested From:

Japan

Laboratory Reagent For In Vitro Research Use Only

Not for resale without prior written consent from LifeSpan BioSciences, Inc.

Created on 9/23/2014

© 2014 LifeSpan BioSciences