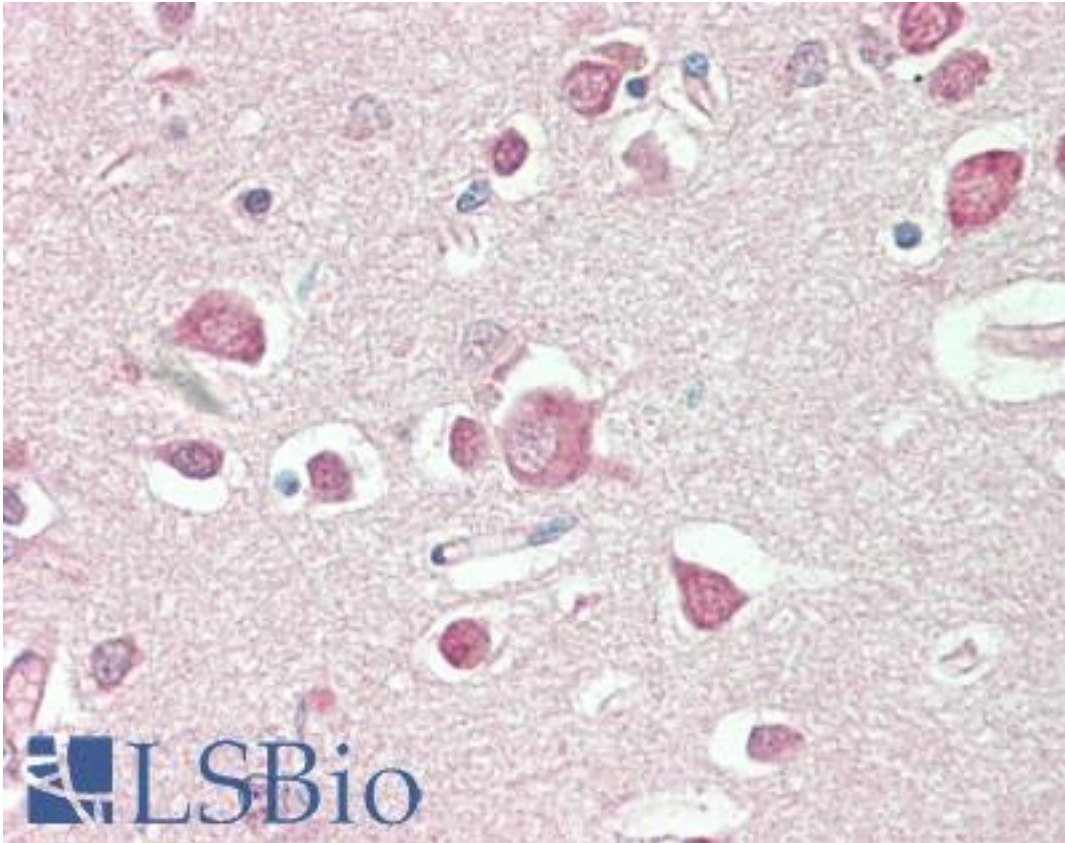


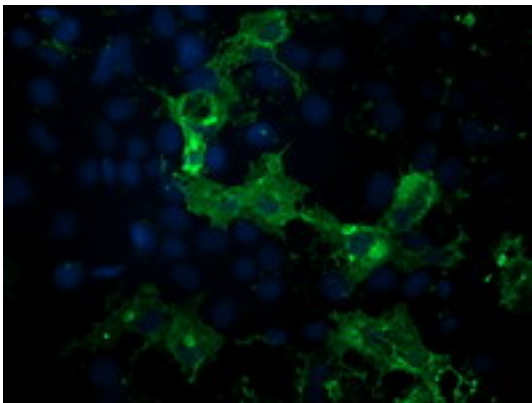
Pde2 / PDE2A Mouse anti-Human Monoclonal (5B10) Antibody - LS-B10450 - LSBio	
CatalogID:	LS-B10450
Validation:	This antibody replaces catalog number LS-C172595. It has been validated for use in the following assays: IHC-P.
Target:	phosphodiesterase 2A, cGMP-stimulated (PDE2A)
Synonyms:	PDE2A Antibody, CGMP-stimulated PDE Antibody, Cyclic GMP-stimulated PDE Antibody, PDE2 Antibody, Pde2a2 Antibody, PED2A4 Antibody, Phosphodiesterase 2A Antibody, CGS-PDE Antibody, CGSPDE Antibody, PDE2A1 Antibody, Pde2a3 Antibody
Family / Subfamily:	Phosphodiesterase / PDE - cAMP/cGMP dual-specific, cGMP-stimulated
Host	PDE2A antibody was produced in Mouse
Clonality:	Monoclonal
Isotype:	IgG2a
Clone Name:	5B10
Immunogen Species:	Pde2 / PDE2A antibody was raised against Human
Antigen Type:	Recombinant protein
Immunogen:	Pde2 / PDE2A antibody was raised against full length human recombinant protein of human PDE2A (NP_002590) produced in HEK293T cell.
Specificity:	Human PDE2 / PDE2A
Reactivity:	Human
Purification:	Protein A/G purified
Presentation:	PBS, pH 7.3, 1% BSA, 50% glycerol, 0.02% sodium azide
Recommended Storage:	Store at -20°C. Minimize freezing and thawing.
Uses:	IHC - Paraffin (1:50), Immunofluorescence (1:100), Western blot (1:2000), Flow Cytometry (1:100) (Optimal dilution to be determined by the researcher)
Size:	100 µl
Concentration:	0.15 mg/ml

Immunohistochemistry Image:



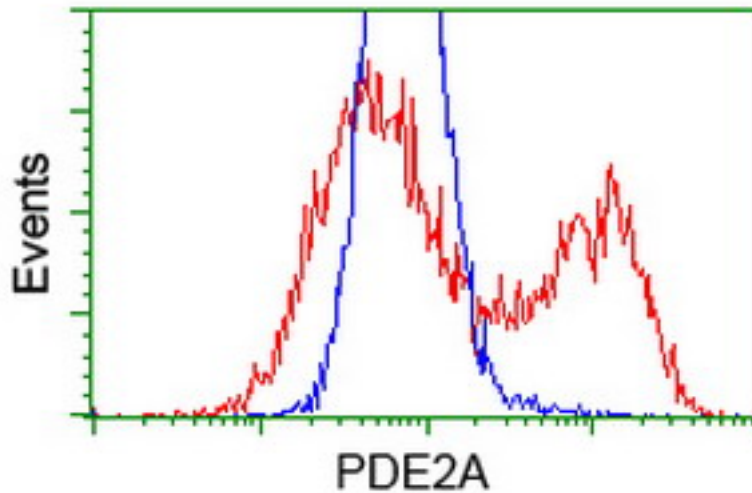
Human Brain, Cortex: Formalin-Fixed, Paraffin-Embedded (FFPE)

Immunofluorescence Image:



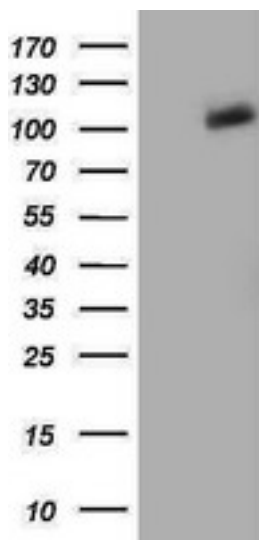
Anti-PDE2A mouse monoclonal antibody immunofluorescent staining of COS7 cells transiently transfected by pCMV6-ENTRY PDE2A.

Flow Cytometry Image:



HEK293T cells transfected with either overexpress plasmid (Red) or empty vector control plasmid (Blue) were immunostained by anti-PDE2A antibody, and then analyzed by flow cytometry.

Western Blot Image:



HEK293T cells were transfected with the pCMV6-ENTRY control (Left lane) or pCMV6-ENTRY PDE2A (Right lane) cDNA for 48 hrs and lysed. Equivalent amounts of cell lysates (5 ug per lane) were separated by SDS-PAGE and immunoblotted with anti-PDE2A.

Requested From:

Japan

Laboratory Reagent For In Vitro Research Use Only

Not for resale without prior written consent from LifeSpan BioSciences, Inc.

Created on 9/23/2014

© 2014 LifeSpan BioSciences