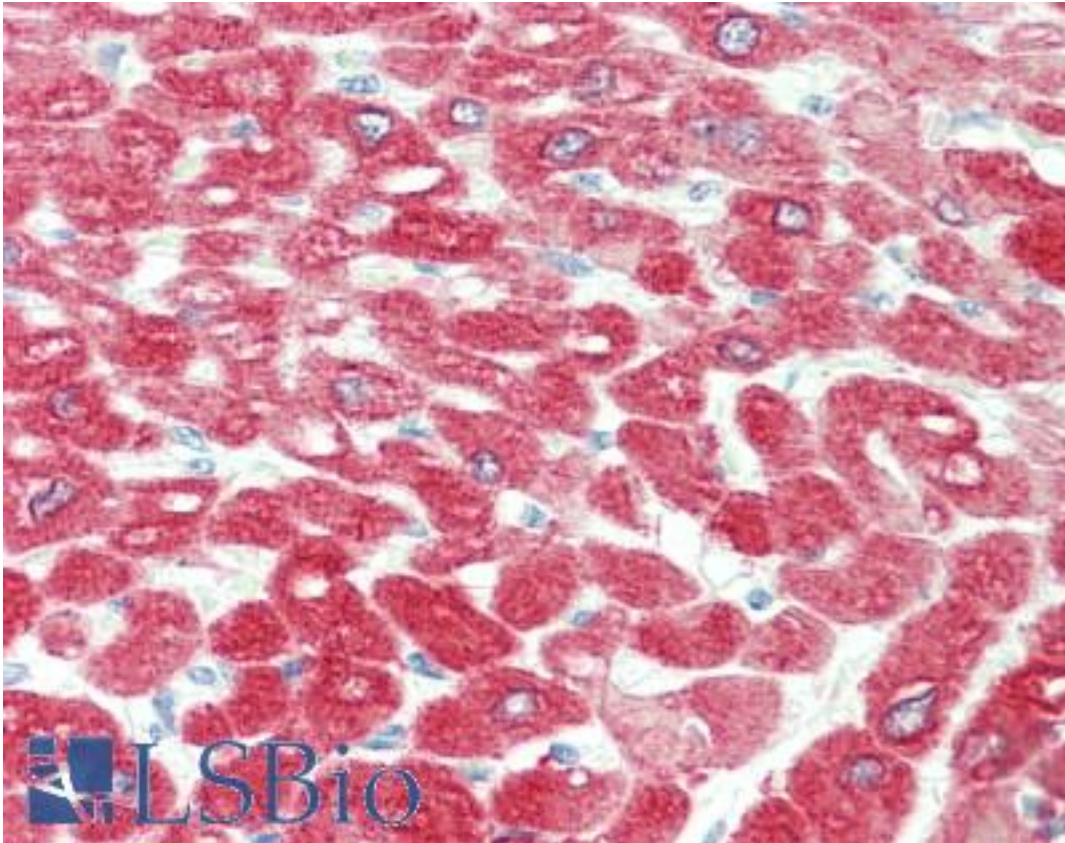


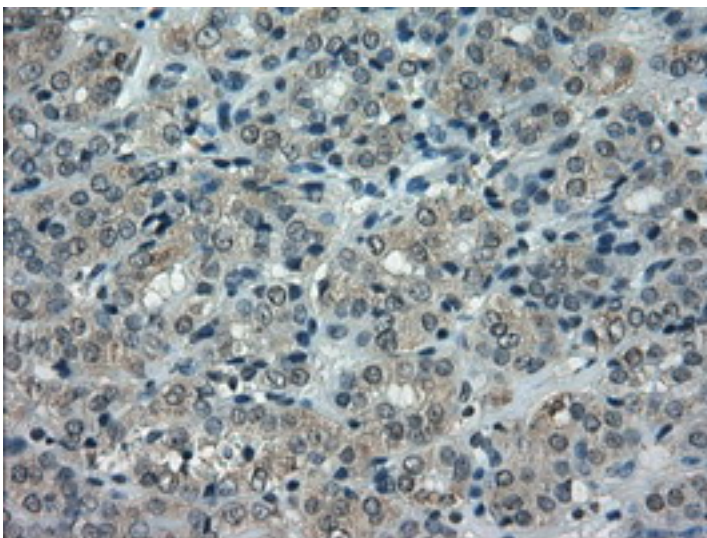
CRYAB / Alpha B Crystallin Mouse anti-Human Monoclonal (6D11) Antibody - LS-B10449 - LSBio	
CatalogID:	LS-B10449
Validation:	This antibody replaces catalog number LS-C114680. It has been validated for use in the following assays: IHC-P.
Target:	crystallin, alpha B (CRYAB)
Synonyms:	CRYAB Antibody, Alpha-crystallin B chain Antibody, CRYA2 Antibody, Crystallin, alpha B Antibody, CTPP2 Antibody, Heat shock protein beta-5 Antibody, HSPB5 Antibody, Alpha B Crystallin Antibody, Alpha(B)-crystallin Antibody, Rosenthal fiber component Antibody, Heat-shock 20 kD like-protein Antibody
Host	CRYAB antibody was produced in Mouse
Clonality:	Monoclonal
Isotype:	IgG1
Clone Name:	6D11
Immunogen Species:	CRYAB / Alpha B Crystallin antibody was raised against Human
Antigen Type:	Recombinant protein
Immunogen:	CRYAB / Alpha B Crystallin antibody was raised against full length human recombinant protein of human CRYAB (NP_001876) produced in HEK293T cell.
Specificity:	Human CRYAB / Alpha B Crystallin
Reactivity:	Human, Monkey, Rat
Purification:	Protein A/G purified
Presentation:	PBS, pH 7.3, 1% BSA, 50% glycerol, 0.02% sodium azide
Recommended Storage:	Store at -20°C. Minimize freezing and thawing.
Usage Summary:	Concentration: 0.5-1.0 mg/ml (Lot dependent)
Uses:	IHC - Paraffin (10 µg/ml), Immunofluorescence (1:50 - 1:100), Western blot (1:500 - 1:1000), Immunoprecipitation, Flow Cytometry (1:100) (Optimal dilution to be determined by the researcher)
Size:	50 µl
Concentration:	0.75 mg/ml

Immunohistochemistry Image:



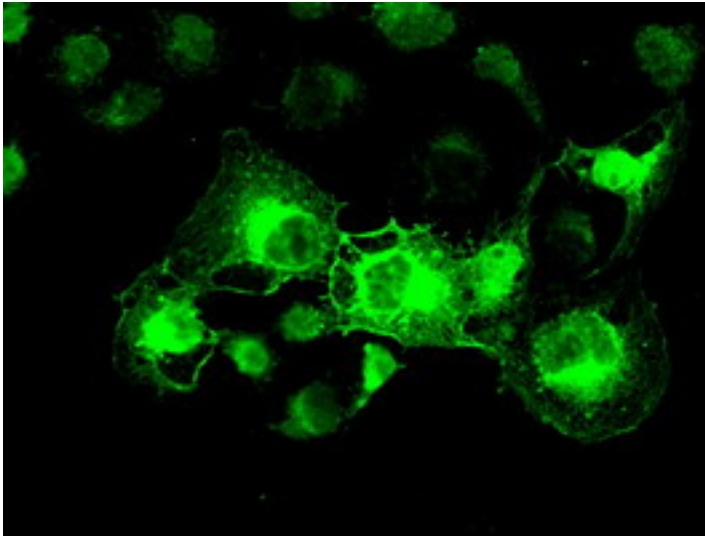
Human Heart: Formalin-Fixed, Paraffin-Embedded (FFPE)

Immunohistochemistry Image:



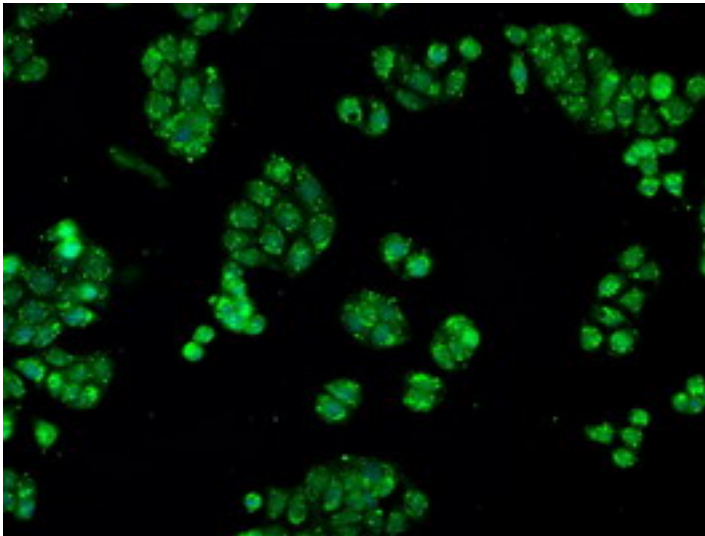
IHC of paraffin-embedded Carcinoma of thyroid tissue using anti-CRYAB mouse monoclonal antibody. (Dilution 1:50).

Immunofluorescence Image:



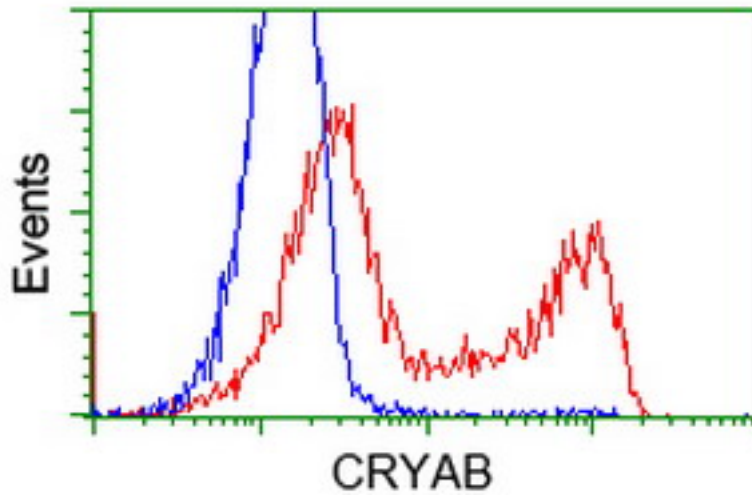
Anti-CRYAB mouse monoclonal antibody immunofluorescent staining of COS7 cells transiently transfected by pCMV6-ENTRY CRYAB.

Immunofluorescence Image:



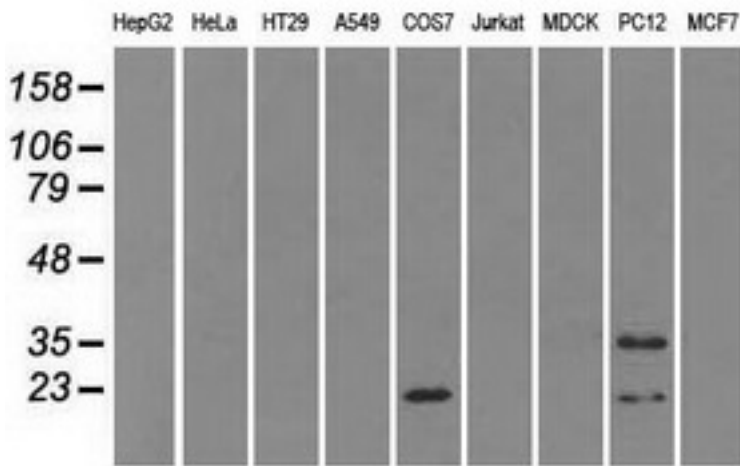
Immunofluorescent staining of HT29 cells using anti-CRYAB mouse monoclonal antibody.

Flow Cytometry Image:



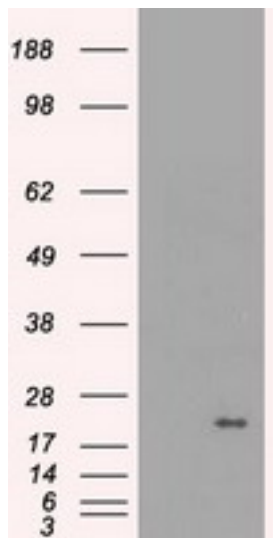
HEK293T cells transfected with either overexpress plasmid (Red) or empty vector control plasmid (Blue) were immunostained by anti-CRYAB antibody, and then analyzed by flow cytometry.

Western Blot Image:



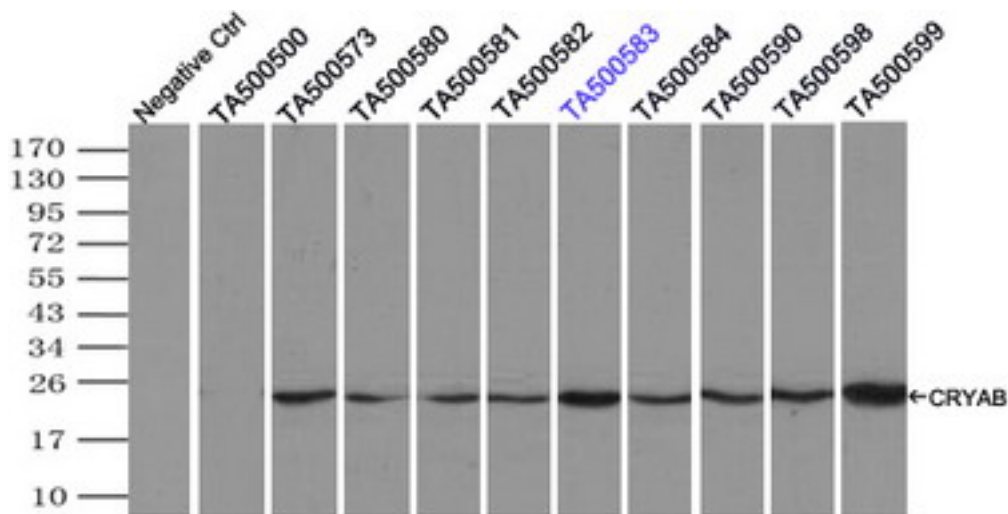
Western blot of extracts (35 ug) from 9 different cell lines by using anti-CRYAB monoclonal antibody.

Western Blot Image:



HEK293T cells were transfected with the pCMV6-ENTRY control (Left lane) or pCMV6-ENTRY CRYAB (Right lane) cDNA for 48 hrs and lysed. Equivalent amounts of cell lysates (5 ug per lane) were separated by SDS-PAGE and immunoblotted with anti-CRYAB.

Immunoprecipitation Image:



Immunoprecipitation(IP) of CRYAB by using monoclonal anti-CRYAB antibodies (Negative control: IP without adding anti-CRYAB antibody.). For each experiment, 500ul of DDK tagged CRYAB overexpression lysates (at 1:5 dilution with HEK293T lysate), 2 ug of anti-CRYAB antibody and 20ul (0.1 mg) of goat anti-mouse conjugated magnetic beads were mixed and incubated overnight. After extensive wash to remove any non-specific binding, the immunoprecipitated products were analyzed with rabbit anti-DDK polyclonal antibody.

Requested From:

Japan

Laboratory Reagent For In Vitro Research Use Only

Not for resale without prior written consent from LifeSpan BioSciences, Inc.

Created on 9/23/2014

© 2014 LifeSpan BioSciences