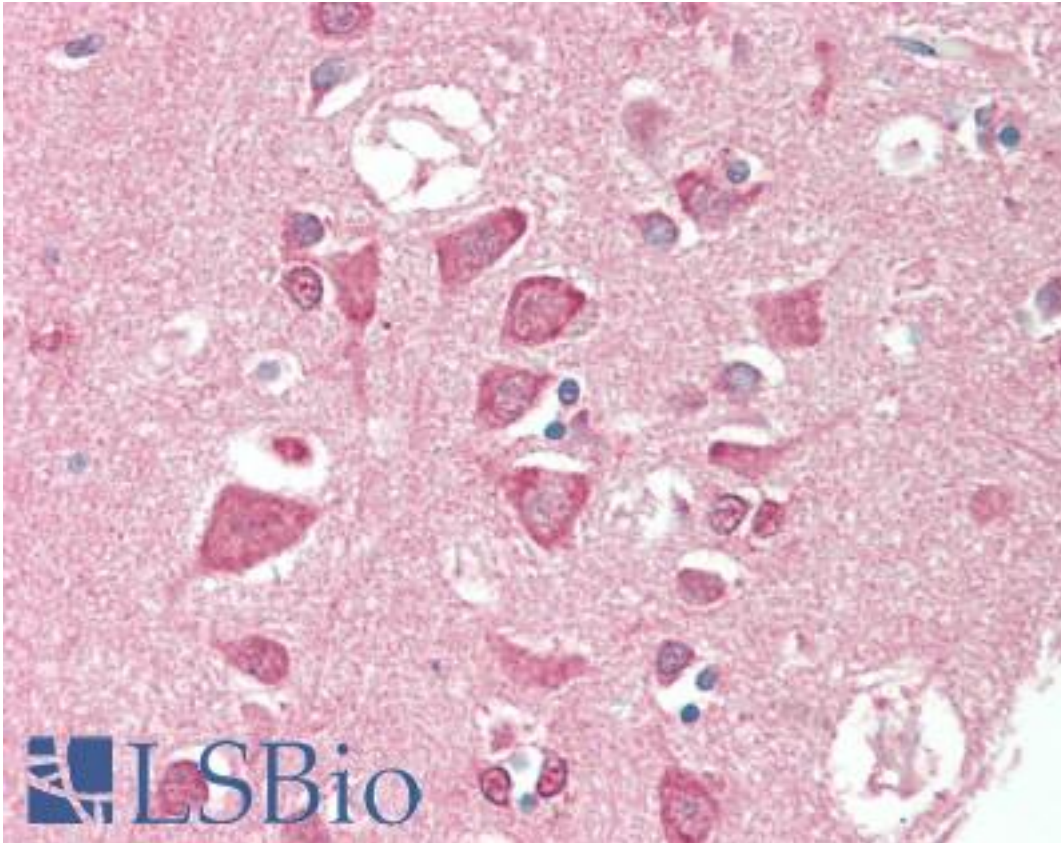


TSG / TWSG1 Mouse anti-Human Monoclonal (2F3) Antibody - LS-B10447 - LSBio

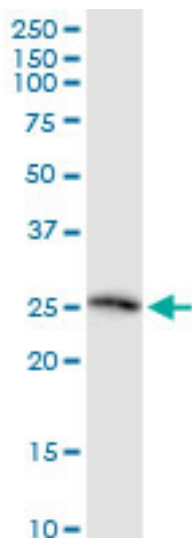
CatalogID:	LS-B10447
Validation:	This antibody replaces catalog number LS-C139271. It has been validated for use in the following assays: IHC-P.
Target:	twisted gastrulation BMP signaling modulator 1 (TWSG1)
Synonyms:	TWSG1 Antibody, TSG Antibody
Host	TWSG1 antibody was produced in Mouse
Clonality:	Monoclonal
Isotype:	IgG2a,k
Clone Name:	2F3
Immunogen Species:	TSG / TWSG1 antibody was raised against Human
Immunogen:	TSG / TWSG1 antibody was raised against tWSG1 (AAH20490, 1 a.a. ~ 223 a.a) full-length recombinant protein with GST tag. MW of the GST tag alone is 26 KDa.
Specificity:	Human TWSG1
Reactivity:	Human
Purification:	Protein A purified
Presentation:	PBS, pH 7.4.
Recommended Storage:	Store at -20°C or lower. Aliquot to avoid repeated freezing and thawing.
Usage Summary:	Sandwich ELISA: Recombinant protein. Western Blot: Tissue lysate, Recombinant protein.
Uses:	IHC - Paraffin (10 µg/ml), Western blot, ELISA (Optimal dilution to be determined by the researcher)
Size:	50 µg
Concentration:	0.5 mg/ml

Immunohistochemistry Image:



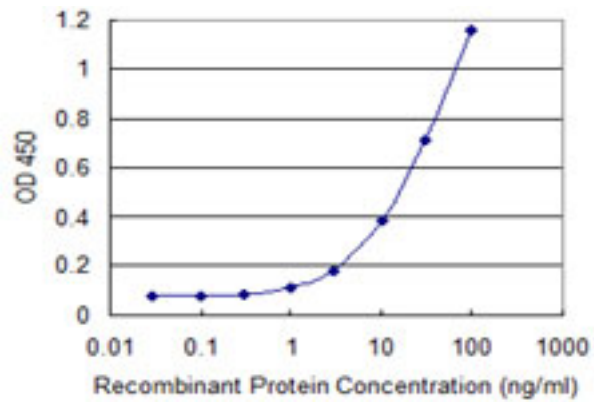
Human Brain, Cortex: Formalin-Fixed, Paraffin-Embedded (FFPE)

Western Blot Image:



TWSG1 monoclonal antibody (M07), clone 2F3. Western blot of TWSG1 expression in human kidney.

ELISA Image:



Detection limit for recombinant GST tagged TWSG1 is 0.3 ng/ml as a capture antibody.

Requested From:

Japan

Laboratory Reagent For In Vitro Research Use Only

Not for resale without prior written consent from LifeSpan BioSciences, Inc.

Created on 9/23/2014

© 2014 LifeSpan BioSciences