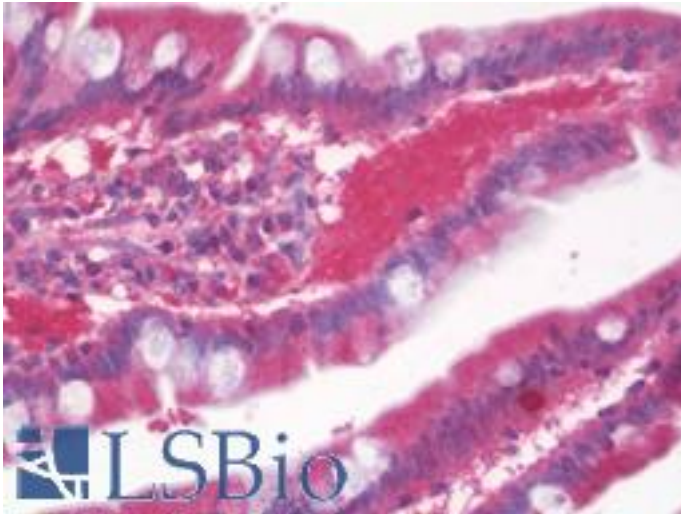


PPID / Cyclophilin D Mouse anti-Human Monoclonal (4C7) Antibody - LS-B10440 - LSBio

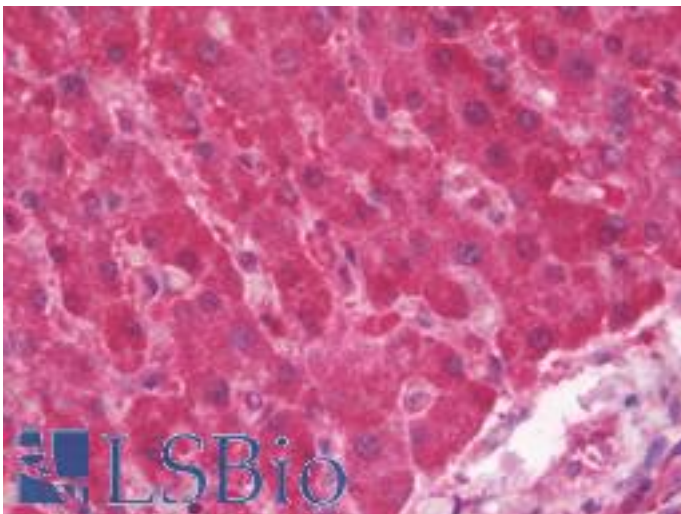
CatalogID:	LS-B10440
Validation:	This antibody replaces catalog number LS-C197965. It has been validated for use in the following assays: IHC-P.
Target:	peptidylprolyl isomerase D (PPID)
Synonyms:	PPID Antibody, Cyclophilin-40 Antibody, CYP40 Antibody, CYP-40 Antibody, Cyclophilin 40 Antibody, Cyclophilin-related protein Antibody, CYPD Antibody, PPlase D Antibody, Cyclophilin D Antibody, Peptidylprolyl isomerase D Antibody, Rotamase D Antibody
Host	PPID antibody was produced in Mouse
Clonality:	Monoclonal
Isotype:	IgG2a,k
Clone Name:	4C7
Immunogen Species:	PPID / Cyclophilin D antibody was raised against Human
Antigen Type:	GST fusion protein
Immunogen:	PPID / Cyclophilin D antibody was raised against pPID (NP_005029.1, aa1-370 full-length recombinant protein with GST tag. MW of the GST tag alone is 26 KDa.
Specificity:	Human PPID / Cyclophilin D
Reactivity:	Human
Purification:	Protein A purified
Presentation:	PBS, pH 7.4.
Recommended Storage:	Store at -20°C or lower. Aliquot to avoid repeated freezing and thawing.
Usage Summary:	Sandwich ELISA: Recombinant protein. Western Blot: Transfected lysate, Recombinant protein. Immunohistochemistry: Paraffin.
Uses:	IHC - Paraffin (10 µg/ml), Immunofluorescence (10 µg/ml), Western blot, ELISA (Optimal dilution to be determined by the researcher)
Size:	50 µg
Concentration:	1 mg/ml

Immunohistochemistry Image:



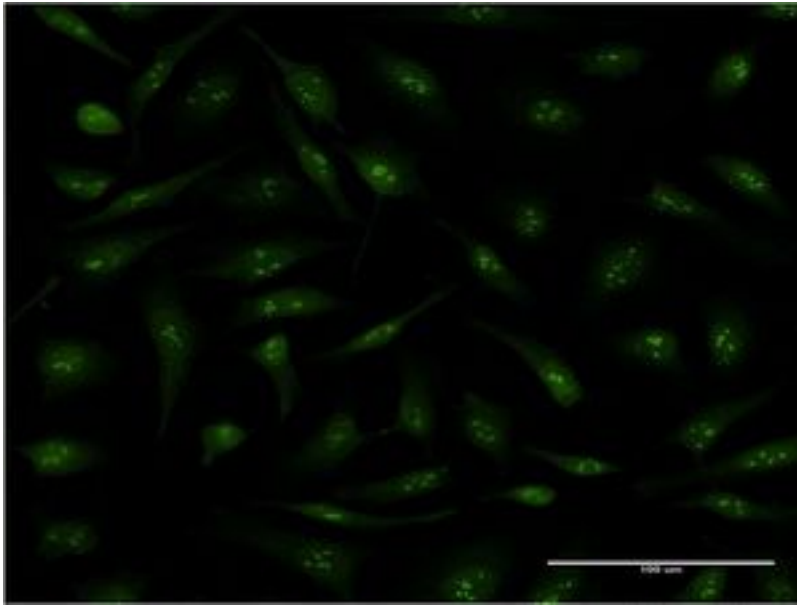
Human Small Intestine: Formalin-Fixed, Paraffin-Embedded (FFPE)

Immunohistochemistry Image:



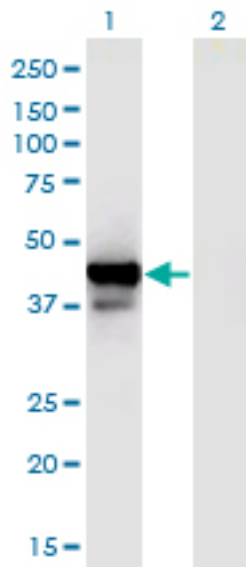
Human Liver: Formalin-Fixed, Paraffin-Embedded (FFPE)

Immunofluorescence Image:



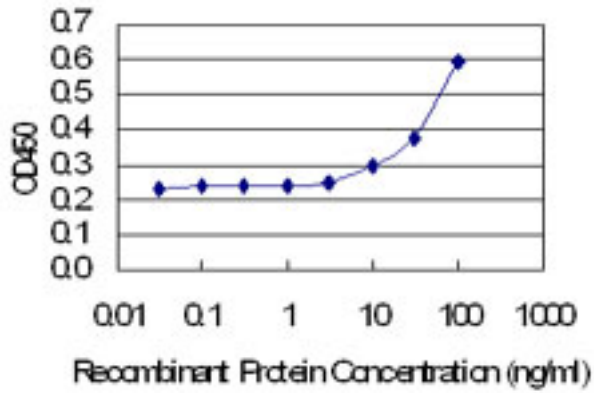
Immunofluorescence of monoclonal antibody to PPID on HeLa cell . [antibody concentration 10 ug/ml]

Western Blot Image:



Western Blot analysis of PPID expression in transfected 293T cell line by PPID monoclonal antibody (M01), clone 4C7. Lane 1: PPID transfected lysate (Predicted MW: 40.8 KDa). Lane 2: Non-transfected lysate.

ELISA Image:



Detection limit for recombinant GST tagged PPID is 3 ng/ml as a capture antibody.

Requested From:

Japan

Laboratory Reagent For In Vitro Research Use Only

Not for resale without prior written consent from LifeSpan BioSciences, Inc.

Created on 9/23/2014

© 2014 LifeSpan BioSciences