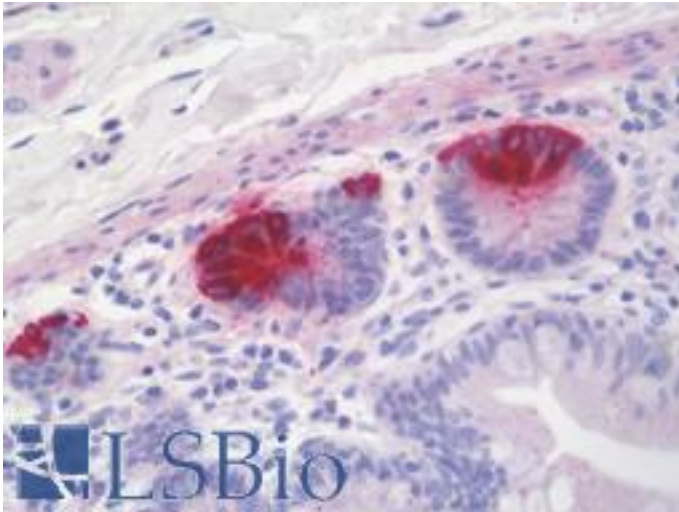


REG3G Rabbit anti-Human Polyclonal (aa89-116) Antibody - LS-B10435 - LSBio

CatalogID:	LS-B10435
Validation:	This antibody replaces catalog number LS-C162534. It has been validated for use in the following assays: IHC-P.
Target:	regenerating islet-derived 3 gamma (REG3G)
Synonyms:	REG3G Antibody, LPPM429 Antibody, PAP1B Antibody, REG-3-gamma Antibody, Regenerating gene III Antibody, REG-III Antibody, UNQ429 Antibody, PAP IB Antibody, PAP-1B Antibody, PAPIB Antibody, Reg III-gamma Antibody
Host	REG3G antibody was produced in Rabbit
Clonality:	Polyclonal
Immunogen Species:	REG3G antibody was raised against Human
Antigen Type:	Synthetic peptide
Immunogen:	REG3G antibody was raised against kLH-conjugated synthetic peptide from internal region of human REG3G.
Specificity:	Human REG3G
Epitope:	aa89-116
Reactivity:	Human, Mouse
Purification:	Immunoaffinity purified
Presentation:	PBS, 0.09% sodium azide
Recommended Storage:	Maintain refrigerated at 2-8°C for up to 6 months. For long term storage store at -20°C.
Uses:	IHC - Paraffin (1:100), Western blot (1:1000), Flow Cytometry (1:10 - 1:50) (Optimal dilution to be determined by the researcher)
Size:	200 µl

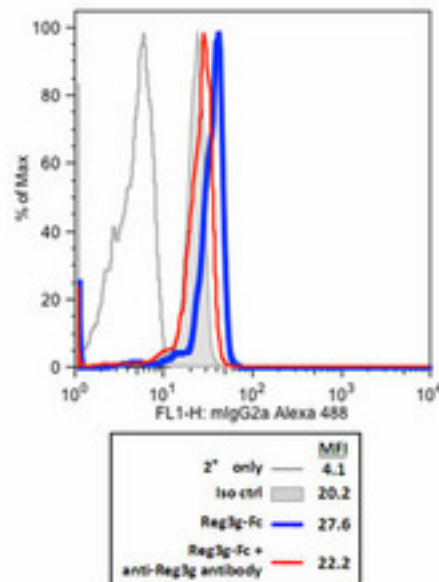
Immunohistochemistry Image:



Human Small Intestine: Formalin-Fixed, Paraffin-Embedded (FFPE)

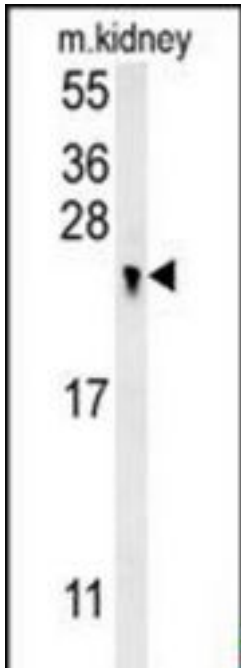
Flow Cytometry Image:

Abgent antibody neutralizes Reg3 γ binding to *S. aureus*



Reg3g binds to *Staphylococcus aureus* and the antibody did block some of this binding (Kindly offered by Dr. Choi).

Western Blot Image:



REG3G Antibody (Center) Western blot of mouse kidney tissue lysates (15 ug/lane). This demonstrates the REG3G antibody detected REG3G protein (arrow).

Requested From:

Japan

Laboratory Reagent For In Vitro Research Use Only

Not for resale without prior written consent from LifeSpan BioSciences, Inc.

Created on 9/23/2014

© 2014 LifeSpan BioSciences