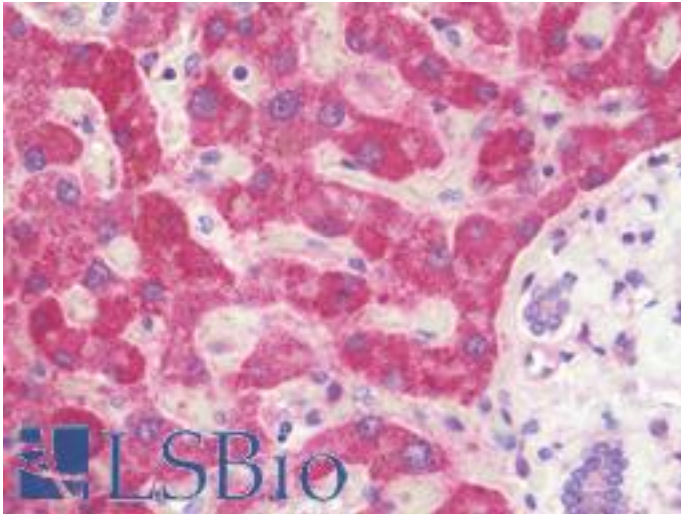


PLIN2 / ADFP / Adipophilin Rabbit anti-Human Polyclonal (aa186-214) Antibody - LS-B10434 - LSBio

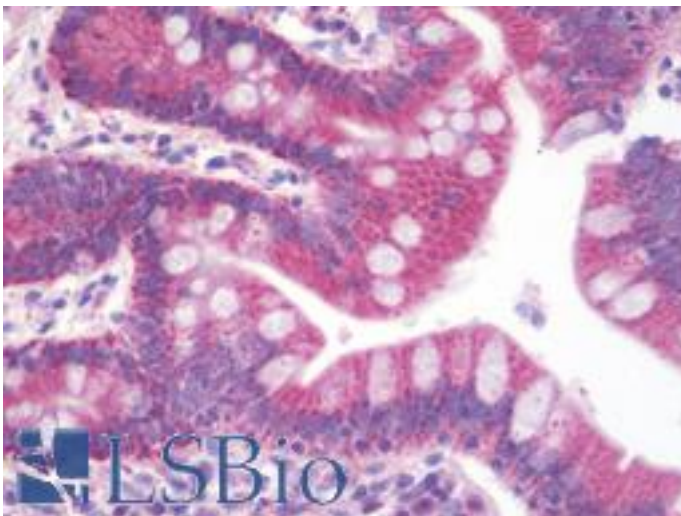
<b>CatalogID:</b>	LS-B10434
<b>Validation:</b>	This antibody replaces catalog number LS-C156082. It has been validated for use in the following assays: IHC-P.
<b>Target:</b>	perilipin 2 (PLIN2)
<b>Synonyms:</b>	PLIN2 Antibody, Adipophilin Antibody, ADFP Antibody, ADRP Antibody, Perilipin 2 Antibody, Perilipin-2 Antibody
<b>Host</b>	PLIN2 antibody was produced in Rabbit
<b>Clonality:</b>	Polyclonal
<b>Immunogen Species:</b>	PLIN2 / ADFP / Adipophilin antibody was raised against Human
<b>Antigen Type:</b>	Synthetic peptide
<b>Immunogen:</b>	PLIN2 / ADFP / Adipophilin antibody was raised against kLH-conjugated synthetic peptide from internal region of human ADFP.
<b>Specificity:</b>	Human ADFP / Adipophilin
<b>Epitope:</b>	aa186-214
<b>Reactivity:</b>	Human
<b>Purification:</b>	Immunoaffinity purified
<b>Presentation:</b>	PBS, 0.09% sodium azide
<b>Recommended Storage:</b>	Maintain refrigerated at 2-8°C for up to 6 months. For long term storage store at -20°C.
<b>Uses:</b>	IHC - Paraffin (1:100), Western blot (1:1000), Flow Cytometry (1:10 - 1:50) (Optimal dilution to be determined by the researcher)
<b>Size:</b>	200 µl

**Immunohistochemistry Image:**



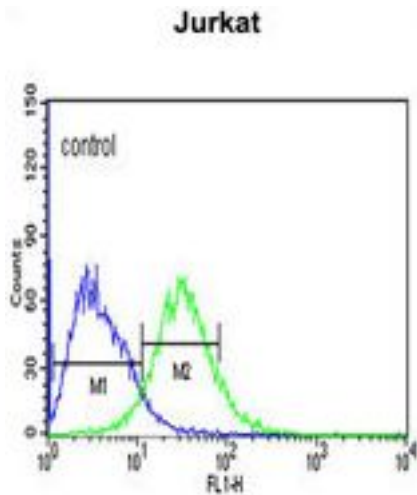
Human Liver: Formalin-Fixed, Paraffin-Embedded (FFPE)

**Immunohistochemistry Image:**



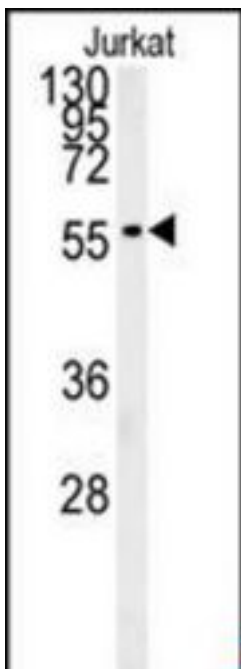
Human Small Intestine: Formalin-Fixed, Paraffin-Embedded (FFPE)

**Flow Cytometry Image:**



ADFP Antibody (Center) flow cytometry of Jurkat cells (right histogram) compared to a negative control cell (left histogram). FITC-conjugated goat-anti-rabbit secondary antibodies were used for the analysis.

**Western Blot Image:**



Western blot of ADFP Antibody (Center) in Jurkat cell line lysates (35 ug/lane). ADFP (arrow) was detected using the purified Pab.

**Requested From:**

Japan

Laboratory Reagent For In Vitro Research Use Only

Not for resale without prior written consent from LifeSpan BioSciences, Inc.

Created on 9/23/2014

© 2014 LifeSpan BioSciences