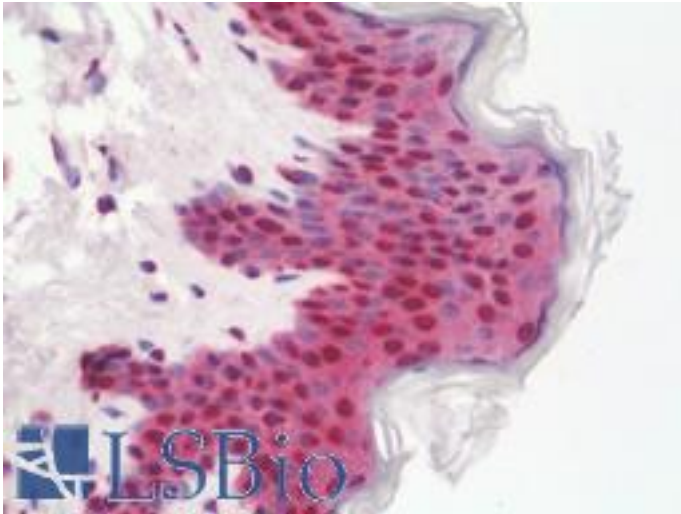


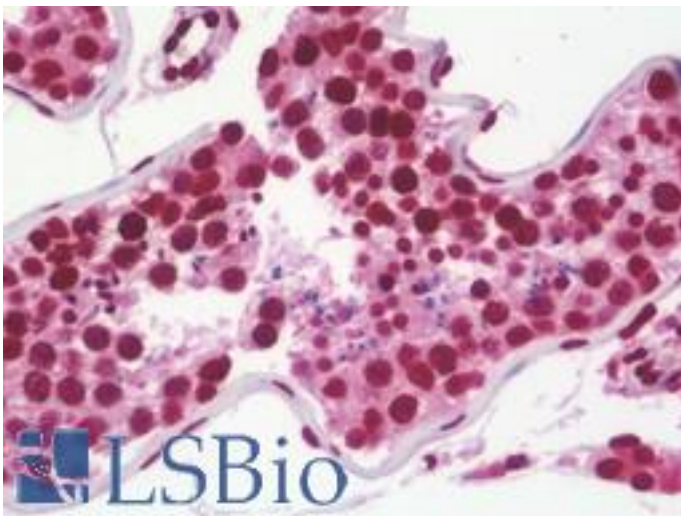
ETV6 / TEL Rabbit anti-Human Polyclonal (aa84-111) Antibody - LS-B10433 - LSBio	
CatalogID:	LS-B10433
Validation:	This antibody replaces catalog number LS-C167848. It has been validated for use in the following assays: IHC-P.
Target:	ets variant 6 (ETV6)
Synonyms:	ETV6 Antibody, ETS translocation variant 6 Antibody, Ets variant gene 6 Antibody, ETS-related protein Tel1 Antibody, TEL/ABL Antibody, TEL1 oncogene Antibody, Transcription factor ETV6 Antibody, Ets variant 6 Antibody, TEL Antibody, TEL1 Antibody
Host	ETV6 antibody was produced in Rabbit
Clonality:	Polyclonal
Immunogen Species:	ETV6 / TEL antibody was raised against Human
Antigen Type:	Synthetic peptide
Immunogen:	ETV6 / TEL antibody was raised against kLH-conjugated synthetic peptide from N-terminal region of human ETV6.
Specificity:	Human ETV6 / TEL
Epitope:	aa84-111
Reactivity:	Human
Purification:	Immunoaffinity purified
Presentation:	PBS, 0.09% sodium azide
Recommended Storage:	Maintain refrigerated at 2-8°C for up to 6 months. For long term storage store at -20°C.
Uses:	IHC - Paraffin (1:100), Western blot (1:1000), Flow Cytometry (1:10 - 1:50) (Optimal dilution to be determined by the researcher)
Size:	200 µl

Immunohistochemistry Image:



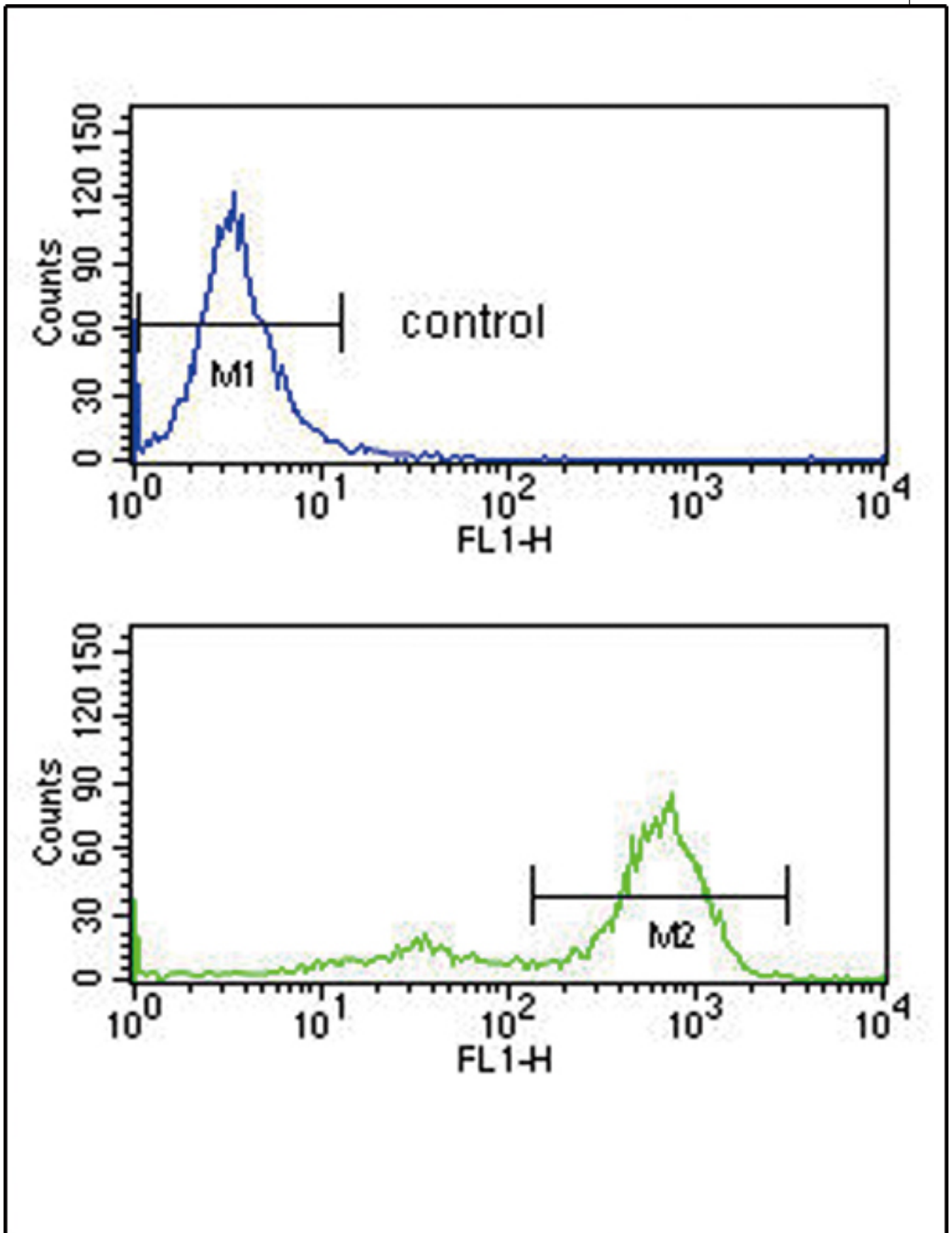
Human Skin: Formalin-Fixed, Paraffin-Embedded (FFPE)

Immunohistochemistry Image:



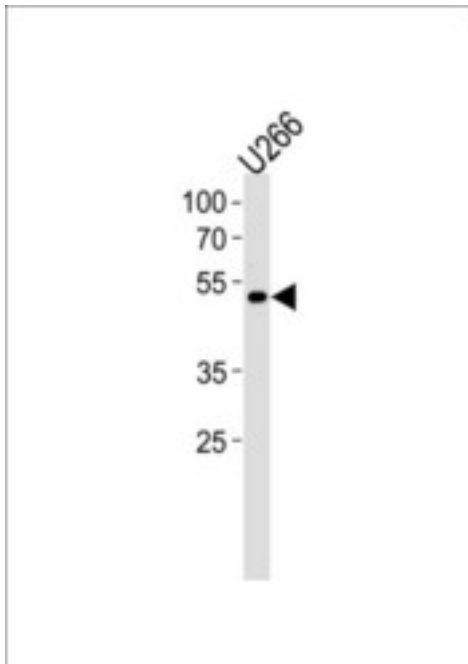
Human Testis: Formalin-Fixed, Paraffin-Embedded (FFPE)

Flow Cytometry Image:



ETV6 Antibody (N-term) flow cytometry analysis of K562 cells (bottom histogram) compared to a negative control cell (top histogram). FITC-conjugated goat-anti-rabbit secondary antibodies were used for the analysis.

Western Blot Image:



Western blot of ETV6 Antibody (N-term) in K562 cell line lysates (35 ug/lane). ETV6 (arrow) was detected using the purified Pab.

Requested From:

Japan

Laboratory Reagent For In Vitro Research Use Only

Not for resale without prior written consent from LifeSpan BioSciences, Inc.

Created on 9/23/2014

© 2014 LifeSpan BioSciences