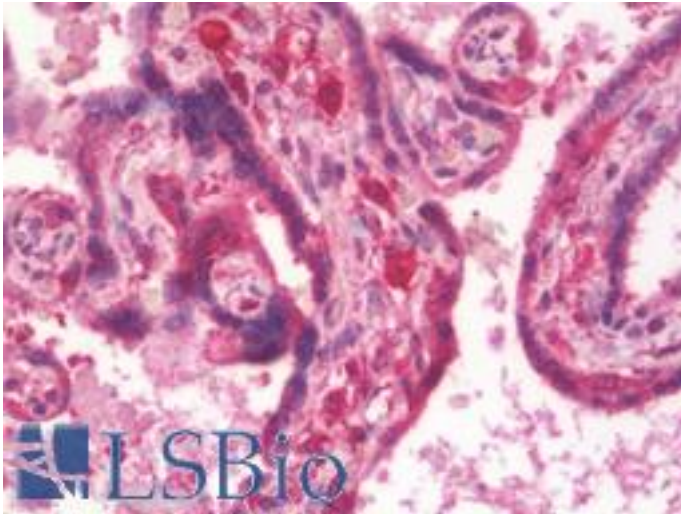


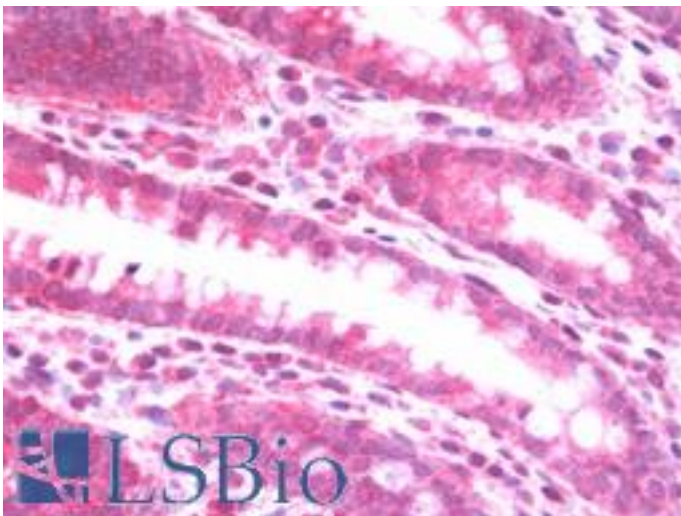
HIF2A / EPAS1 Mouse Monoclonal (EP190b) Antibody - LS-B10429 - LSBio	
CatalogID:	LS-B10429
Validation:	This antibody replaces catalog number LS-C153080. It has been validated for use in the following assays: IHC-P.
Target:	endothelial PAS domain protein 1 (EPAS1)
Synonyms:	EPAS1 Antibody, BHLHe73 Antibody, ECYT4 Antibody, HIF-1-alpha-like factor Antibody, HIF2-alpha Antibody, HIF2A Antibody, EPAS-1 Antibody, HIF-2-alpha Antibody, HIF-1alpha-like factor Antibody, MOP2 Antibody, Member of PAS protein 2 Antibody, PASD2 Antibody
Host	EPAS1 antibody was produced in Mouse
Clonality:	Monoclonal
Isotype:	IgG1
Clone Name:	EP190b
Immunogen:	HIF2A / EPAS1 antibody was raised against fusion protein corresponding to aa 535-631 of human HIF-2-alpha
Reactivity:	Human
Purification:	Protein G purified
Presentation:	PBS, pH 7.4; 50% glycerol, 0.09% sodium azide.
Recommended Storage:	Store at -20°C, stable for one year. Avoid repeated freeze thaw cycles.
Uses:	IHC - Paraffin (10 µg/ml), IHC - Frozen (10 µg/ml), ICC (10 µg/ml), Western blot (1 - 10 µg/ml) (Optimal dilution to be determined by the researcher)
Size:	50 µg
Concentration:	1 mg/ml

Immunohistochemistry Image:



Human Placenta: Formalin-Fixed, Paraffin-Embedded (FFPE)

Immunohistochemistry Image:



Human Colon: Formalin-Fixed, Paraffin-Embedded (FFPE)

Requested From:

Japan

Laboratory Reagent For In Vitro Research Use Only

Not for resale without prior written consent from LifeSpan BioSciences, Inc.

Created on 9/23/2014

© 2014 LifeSpan BioSciences