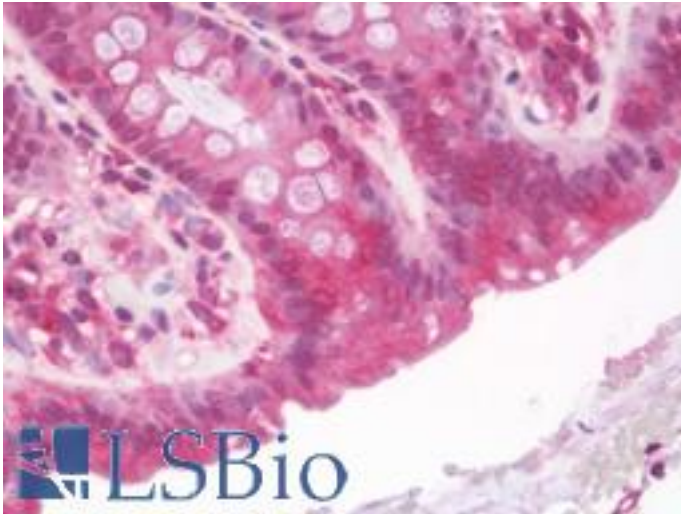


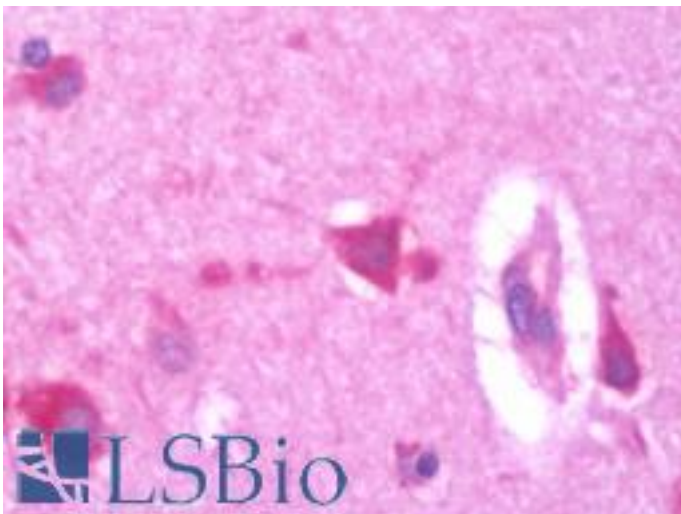
UBE2G2 Mouse anti-Human Monoclonal (4D6) Antibody - LS-B10428 - LSBio	
<b>CatalogID:</b>	LS-B10428
<b>Validation:</b>	This antibody replaces catalog number LS-C174255. It has been validated for use in the following assays: IHC-P.
<b>Target:</b>	ubiquitin-conjugating enzyme E2G 2 (UBE2G2)
<b>Synonyms:</b>	UBE2G2 Antibody, UBC7 Antibody, Ubiquitin carrier protein G2 Antibody, Ubiquitin conjugating enzyme 7 Antibody, Ubiquitin-protein ligase G2 Antibody
<b>Host</b>	UBE2G2 antibody was produced in Mouse
<b>Clonality:</b>	Monoclonal
<b>Isotype:</b>	IgG2a
<b>Clone Name:</b>	4D6
<b>Immunogen Species:</b>	UBE2G2 antibody was raised against Human
<b>Antigen Type:</b>	Recombinant protein
<b>Immunogen:</b>	UBE2G2 antibody was raised against full length human recombinant protein of human UBE2G2(NP_003334) produced in HEK293T cell.
<b>Specificity:</b>	Human Ube2G2
<b>Reactivity:</b>	Human, Monkey, Mouse, Rat, Dog
<b>Purification:</b>	Protein A/G purified
<b>Presentation:</b>	PBS, pH 7.3, 1% BSA, 50% glycerol, 0.02% sodium azide
<b>Recommended Storage:</b>	Store at -20°C. Minimize freezing and thawing.
<b>Uses:</b>	IHC - Paraffin (10 µg/ml), Immunofluorescence (1:100), Western blot (1:200 - 1:4000) (Optimal dilution to be determined by the researcher)
<b>Size:</b>	50 µl
<b>Concentration:</b>	1 mg/ml

**Immunohistochemistry Image:**



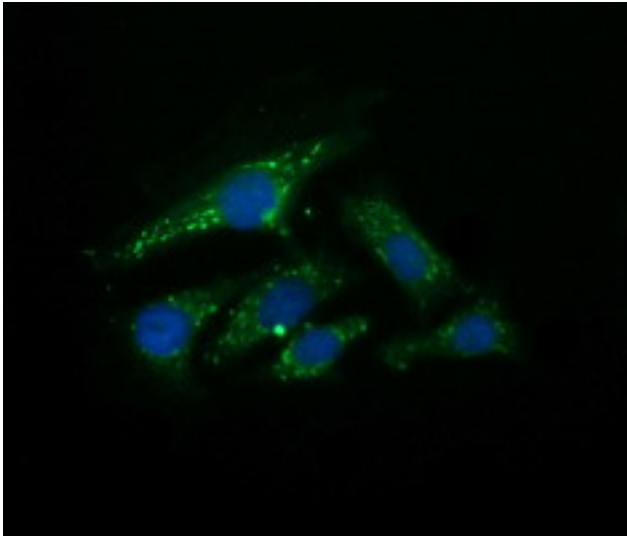
Human Colon: Formalin-Fixed, Paraffin-Embedded (FFPE)

**Immunohistochemistry Image:**



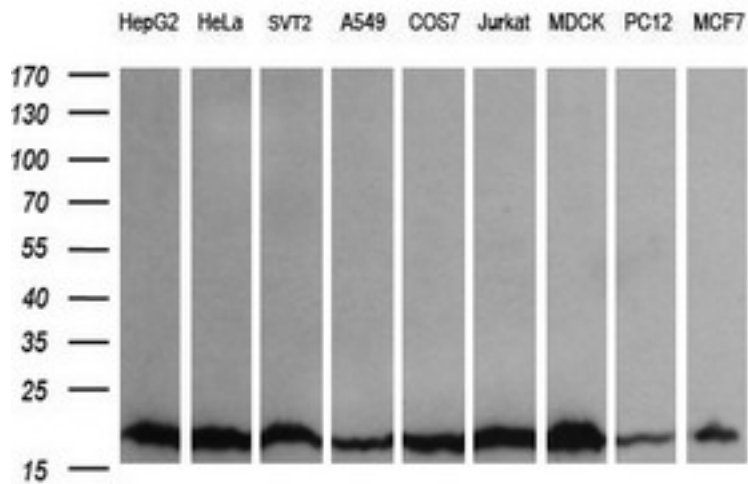
Human Brain, Cortex: Formalin-Fixed, Paraffin-Embedded (FFPE)

**Immunofluorescence Image:**



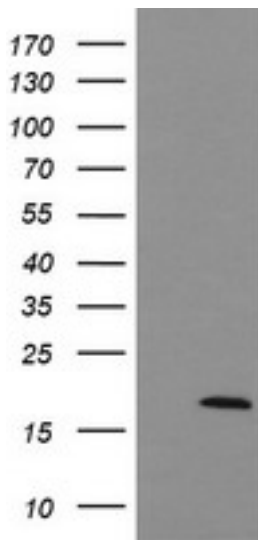
Immunofluorescent staining of HeLa cells using anti-UBE2G2 mouse monoclonal antibody.

**Western Blot Image:**



Western blot of extracts (35 ug) from 9 different cell lines by using anti-UBE2G2 monoclonal antibody (HepG2: human; HeLa: human; SVT2: mouse; A549: human; COS7: monkey; Jurkat: human; MDCK: canine; PC12: rat; MCF7: human).

**Western Blot Image:**



HEK293T cells were transfected with the pCMV6-ENTRY control (Left lane) or pCMV6-ENTRY UBE2G2 (Right lane) cDNA for 48 hrs and lysed. Equivalent amounts of cell lysates (5 ug per lane) were separated by SDS-PAGE and immunoblotted with anti-UBE2G2.

**Requested From:**

Japan

Laboratory Reagent For In Vitro Research Use Only

Not for resale without prior written consent from LifeSpan BioSciences, Inc.

Created on 9/23/2014

© 2014 LifeSpan BioSciences