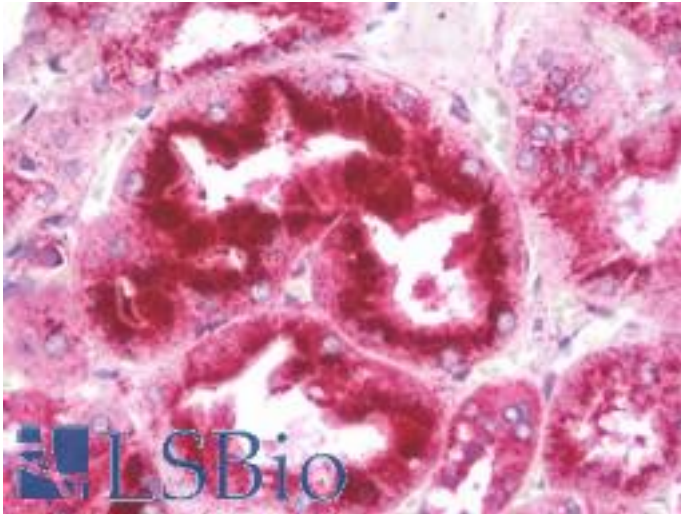


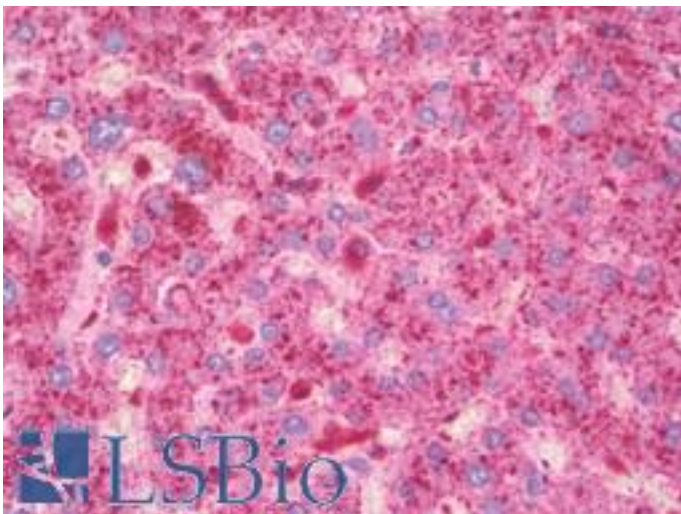
LAMP2 / CD107b Mouse anti-Mouse Monoclonal Antibody - LS-B10425 - LSBio	
CatalogID:	LS-B10425
Validation:	This antibody replaces catalog number LS-C165677. It has been validated for use in the following assays: IHC-P.
Target:	lysosomal-associated membrane protein 2 (LAMP2)
Synonyms:	LAMP2 Antibody, CD107b Antibody, CD107b antigen Antibody, LAMPB Antibody, LGP110 Antibody, LAMP-2 Antibody
Family / Subfamily:	Cancer
Host	LAMP2 antibody was produced in Mouse
Clonality:	Monoclonal
Isotype:	IgG1,k
Immunogen Species:	LAMP2 / CD107b antibody was raised against Mouse
Antigen Type:	Recombinant protein
Immunogen:	LAMP2 / CD107b antibody was raised against IAMP2 recombinant protein.
Specificity:	Mouse CD107b / LAMP2
Reactivity:	Mouse, Human
Purification:	Protein G purified
Presentation:	PBS, 0.09% sodium azide
Recommended Storage:	Maintain refrigerated at 2-8°C for up to 6 months. For long term storage store at -20°C.
Uses:	IHC - Paraffin (1:50), Immunofluorescence (1:10 - 1:50), Western blot (1:100 - 1:1000) (Optimal dilution to be determined by the researcher)
Size:	200 µl

Immunohistochemistry Image:



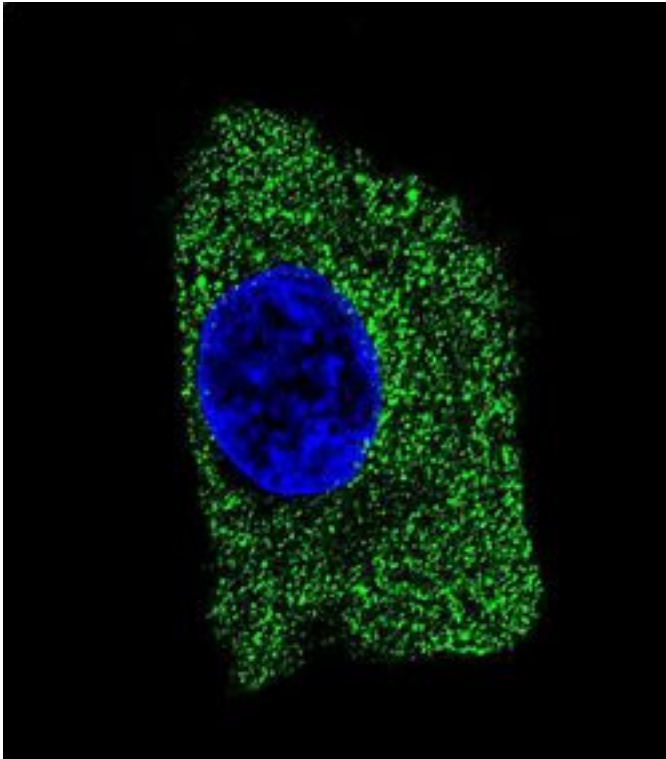
Human Kidney: Formalin-Fixed, Paraffin-Embedded (FFPE)

Immunohistochemistry Image:



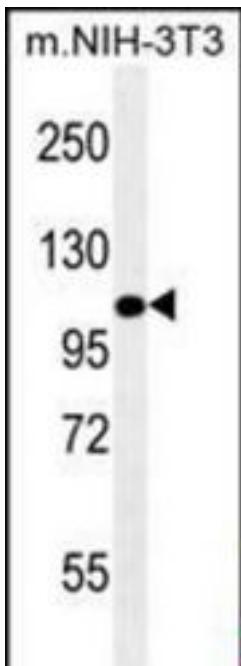
Human Liver: Formalin-Fixed, Paraffin-Embedded (FFPE)

Immunofluorescence Image:



Confocal immunofluorescence of LAMP2 Antibody with HepG2 cell followed by Alexa Fluor 488-conjugated goat anti-mouse IgG (green). DAPI was used to stain the cell nuclear (blue).

Western Blot Image:



LAMP2 Antibody Western blot of mouse NIH-3T3 cell line lysates (35 ug/lane). This demonstrates the LAMP2 antibody detected the LAMP2 protein (arrow).

Requested From:

Japan

Laboratory Reagent For In Vitro Research Use Only

Not for resale without prior written consent from LifeSpan BioSciences, Inc.

Created on 9/23/2014

© 2014 LifeSpan BioSciences