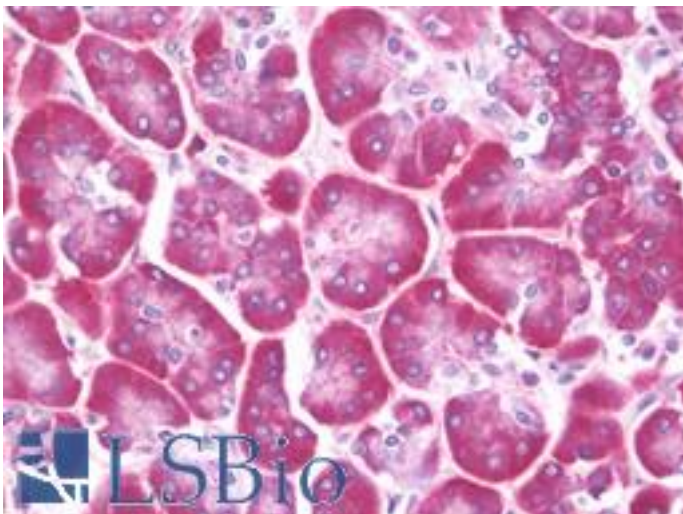


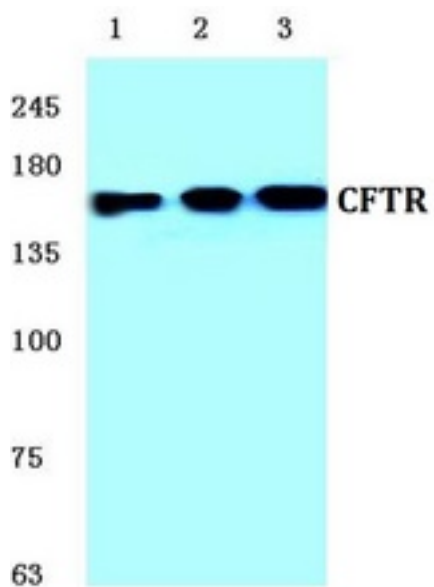
CFTR Rabbit anti-Human Polyclonal (Glu733) Antibody - LS-B10424 - LSBio	
CatalogID:	LS-B10424
Validation:	This antibody replaces catalog number LS-C176401. It has been validated for use in the following assays: IHC-P.
Target:	cystic fibrosis transmembrane conductance regulator (ATP-binding cassette sub-family C, member 7) (CFTR)
Synonyms:	CFTR Antibody, ABC35 Antibody, ABCC7 Antibody, CF Antibody, DJ760C5.1 Antibody, MRP7 Antibody, CFTR/MRP Antibody, TNR-CFTR Antibody
Family / Subfamily:	Transporter / ATP-binding cassette - ABCC/MRP
Host	CFTR antibody was produced in Rabbit
Clonality:	Polyclonal
Immunogen Species:	CFTR antibody was raised against Human
Antigen Type:	Synthetic peptide
Immunogen:	CFTR antibody was raised against synthetic peptide around Glu733 of human CFTR
Specificity:	Human CFTR
Epitope:	Glu733
Reactivity:	Human, Mouse, Rat
Purification:	Immunoaffinity purified
Presentation:	PBS, pH 7.2, 0.05% sodium azide
Recommended Storage:	Store at 4°C short term. Aliquot and store at -20°C long term. Avoid freeze-thaw cycles.
Uses:	IHC - Paraffin (10 µg/ml), Western blot (1:500 - 1:1000) (Optimal dilution to be determined by the researcher)
Size:	50 µl
Concentration:	1 mg/ml

Immunohistochemistry Image:



Human Pancreas: Formalin-Fixed, Paraffin-Embedded (FFPE)

Western Blot Image:



Western blot (WB) analysis of CFTR pAb at 1:500 dilution. Lane1:HEK293T whole cell lysate
Lane2:Raw264.7 whole cell lysate Lane3:PC12 whole cell lysate

Requested From:

Japan

Laboratory Reagent For In Vitro Research Use Only

Not for resale without prior written consent from LifeSpan BioSciences, Inc.

Created on 9/23/2014

© 2014 LifeSpan BioSciences