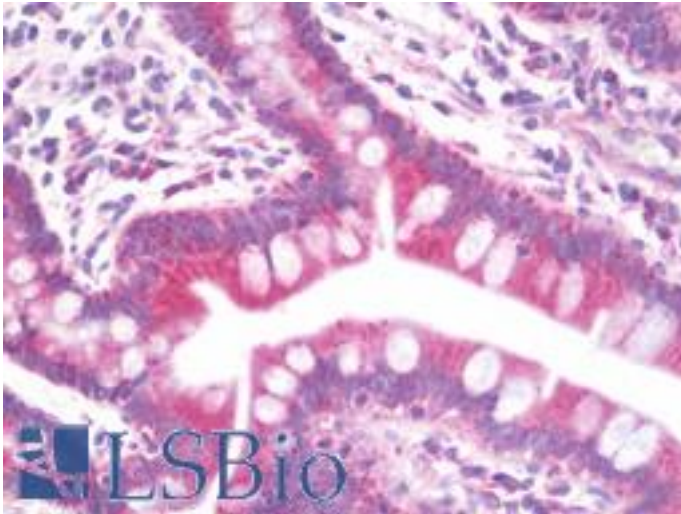


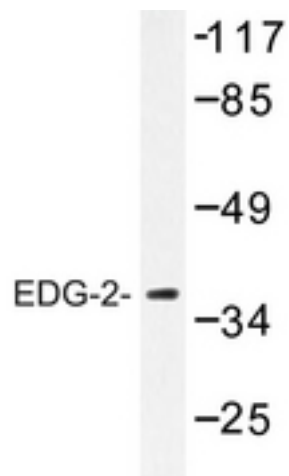
LPA1 / LPA1 / EDG2 Rabbit anti-Human Polyclonal (Trp45) Antibody - LS-B10423 - LSBio	
<b>CatalogID:</b>	LS-B10423
<b>Validation:</b>	This antibody replaces catalog number LS-C177141. It has been validated for use in the following assays: IHC-P.
<b>Target:</b>	lysophosphatidic acid receptor 1 (LPA1)
<b>Synonyms:</b>	LPA1 Antibody, EDG-2 Antibody, EDG2 Antibody, Gpcr26 Antibody, Rec.1.3 Antibody, Vzq-1 Antibody, Ventricular zone gene 1 Antibody, LPA receptor 1 Antibody, LPA-1 Antibody, LPA1 Antibody, Mrec1.3 Antibody, VZG1 Antibody
<b>Family / Subfamily:</b>	GPCR / Lysophospholipid/Lysosphingolipid
<b>Host</b>	LPA1 antibody was produced in Rabbit
<b>Clonality:</b>	Polyclonal
<b>Immunogen Species:</b>	LPA1 / LPA1 / EDG2 antibody was raised against Human
<b>Antigen Type:</b>	Synthetic peptide
<b>Immunogen:</b>	LPA1 / LPA1 / EDG2 antibody was raised against synthetic peptide around Trp45 of human LPA1 / EDG2
<b>Specificity:</b>	Human LPA1 / EDG2
<b>Epitope:</b>	Trp45
<b>Reactivity:</b>	Human, Rat
<b>Purification:</b>	Immunoaffinity purified
<b>Presentation:</b>	PBS, pH 7.2, 0.05% sodium azide
<b>Recommended Storage:</b>	Store at 4°C short term. Aliquot and store at -20°C long term. Avoid freeze-thaw cycles.
<b>Uses:</b>	IHC - Paraffin (5 µg/ml), Immunofluorescence (1:50 - 1:200), Western blot (1:500 - 1:1000) (Optimal dilution to be determined by the researcher)
<b>Size:</b>	100 µl
<b>Concentration:</b>	1 mg/ml

**Immunohistochemistry Image:**



Human Small Intestine: Formalin-Fixed, Paraffin-Embedded (FFPE)

**Western Blot Image:**



Western blot of EDG-2 (W45) pAb in extracts from Jurkat cells.

**Requested From:**

Japan

Laboratory Reagent For In Vitro Research Use Only

Not for resale without prior written consent from LifeSpan BioSciences, Inc.

Created on 9/23/2014

© 2014 LifeSpan BioSciences