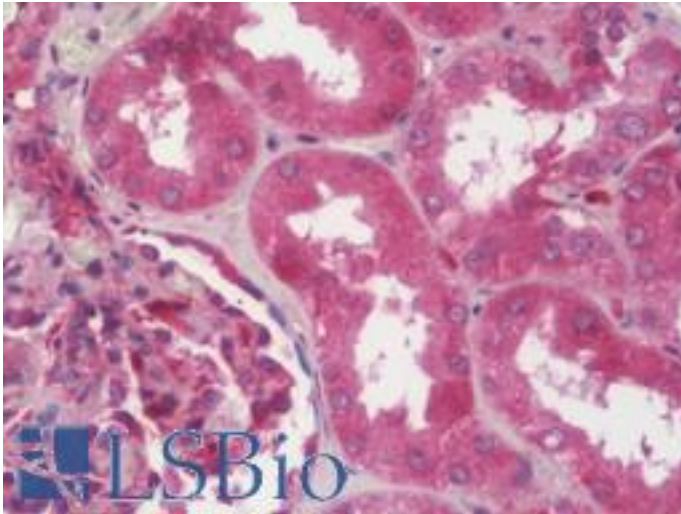


SAV1 / WW45 Rabbit anti-Human Polyclonal (aa65-92) Antibody - LS-B10422 - LSBio

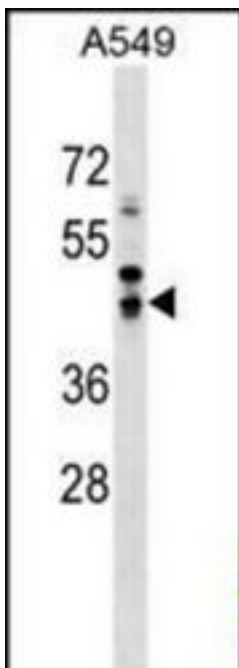
CatalogID:	LS-B10422
Validation:	This antibody replaces catalog number LS-C158919. It has been validated for use in the following assays: IHC-P.
Target:	salvador homolog 1 (Drosophila) (SAV1)
Synonyms:	SAV1 Antibody, 45 kDa WW domain protein Antibody, HWW45 Antibody, WW domain-containing Antibody, WW45 Antibody, Salvador Antibody, SAV Antibody, WWP4 Antibody, Protein salvador homolog 1 Antibody
Host	SAV1 antibody was produced in Rabbit
Clonality:	Polyclonal
Immunogen Species:	SAV1 / WW45 antibody was raised against Human
Antigen Type:	Synthetic peptide
Immunogen:	SAV1 / WW45 antibody was raised against kLH-conjugated synthetic peptide from N-terminal region of human SAV1.
Specificity:	Human SAV1 / WW45
Epitope:	aa65-92
Reactivity:	Human
Purification:	Immunoaffinity purified
Presentation:	PBS, 0.09% sodium azide
Recommended Storage:	Maintain refrigerated at 2-8°C for up to 6 months. For long term storage store at -20°C.
Uses:	IHC - Paraffin (1:100), Western blot (1:1000) (Optimal dilution to be determined by the researcher)
Size:	200 µl

Immunohistochemistry Image:



Human Kidney: Formalin-Fixed, Paraffin-Embedded (FFPE)

Western Blot Image:



SAV1 Antibody (N-term) Western blot of A549 cell line lysates (35 ug/lane). This demonstrates the SAV1 antibody detected the SAV1 protein (arrow).

Requested From:

Japan

Laboratory Reagent For In Vitro Research Use Only

Not for resale without prior written consent from LifeSpan BioSciences, Inc.

Created on 9/23/2014

© 2014 LifeSpan BioSciences