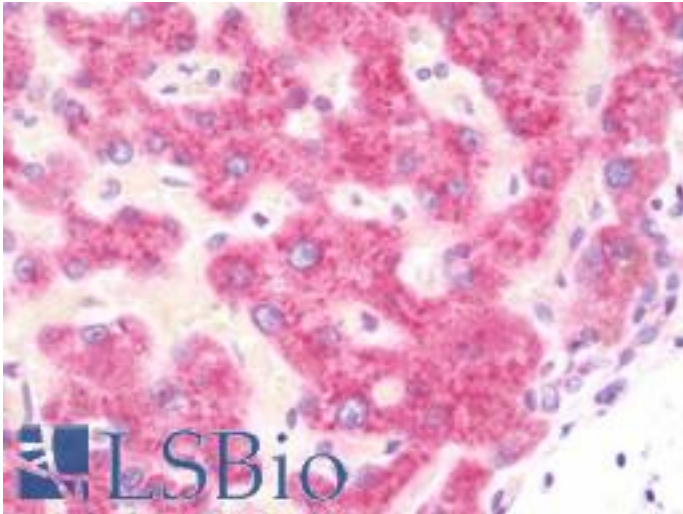


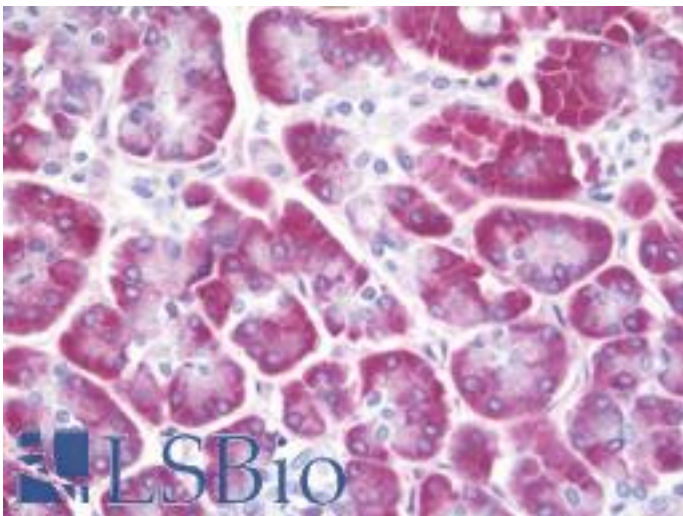
SMPD1 / Acid Sphingomyelinase Rabbit anti-Human Polyclonal (aa391-419) Antibody - LS-B10421 - LSBio	
CatalogID:	LS-B10421
Validation:	This antibody replaces catalog number LS-C161319. It has been validated for use in the following assays: IHC-P.
Target:	sphingomyelin phosphodiesterase 1, acid lysosomal (SMPD1)
Synonyms:	SMPD1 Antibody, Acid sphingomyelinase Antibody, ASM Antibody, NPD Antibody, ASMASE Antibody
Family / Subfamily:	Phosphodiesterase - Other / not assigned-Phosphodiesterase - Other
Host	SMPD1 antibody was produced in Rabbit
Clonality:	Polyclonal
Immunogen Species:	SMPD1 / Acid Sphingomyelinase antibody was raised against Human
Antigen Type:	Synthetic peptide
Immunogen:	SMPD1 / Acid Sphingomyelinase antibody was raised against kLH-conjugated synthetic peptide from C-terminal region of human SMPD1.
Specificity:	Human ASM / SMPD1
Epitope:	aa391-419
Reactivity:	Human
Purification:	Immunoaffinity purified
Presentation:	PBS, 0.09% sodium azide
Recommended Storage:	Maintain refrigerated at 2-8°C for up to 6 months. For long term storage store at -20°C.
Uses:	IHC - Paraffin (1:100), Western blot (1:1000), Flow Cytometry (1:10 - 1:50) (Optimal dilution to be determined by the researcher)
Size:	200 µl

Immunohistochemistry Image:



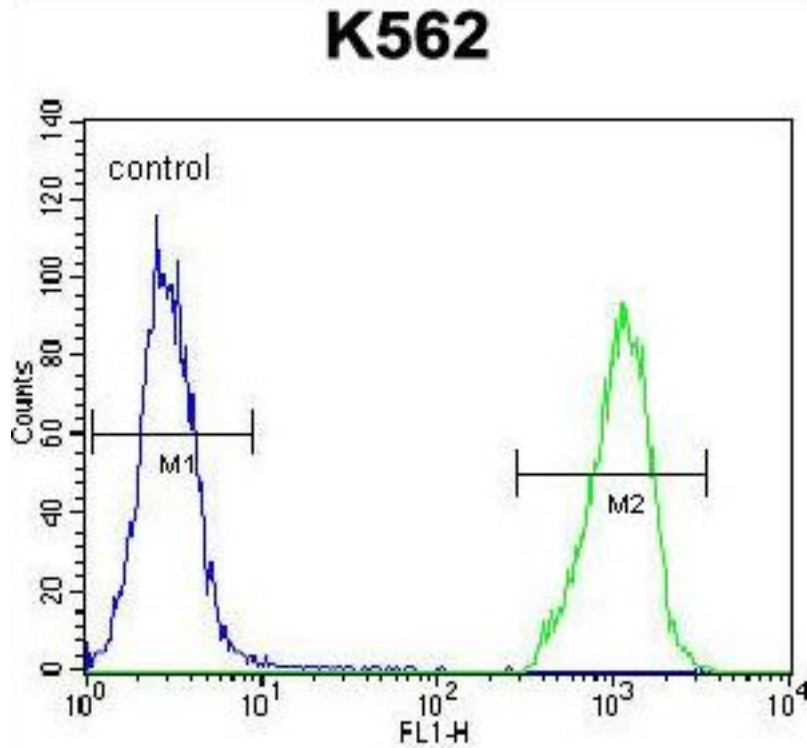
Human Liver: Formalin-Fixed, Paraffin-Embedded (FFPE)

Immunohistochemistry Image:



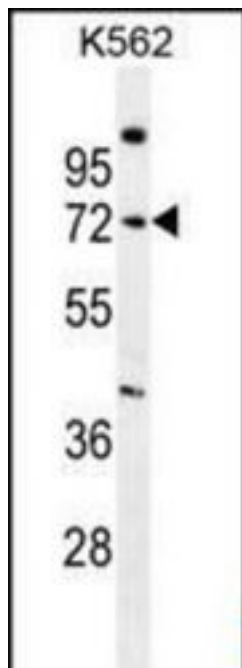
Human Pancreas: Formalin-Fixed, Paraffin-Embedded (FFPE)

Flow Cytometry Image:



SMPD1 Antibody (C-term) flow cytometry of K562 cells (right histogram) compared to a negative control cell (left histogram). FITC-conjugated goat-anti-rabbit secondary antibodies were used for the analysis.

Western Blot Image:



SMPD1 Antibody (C-term) Western blot of K562 cell line lysates (35 ug/lane). This demonstrates the SMPD1 antibody detected the SMPD1 protein (arrow).

Requested From:	Japan
Laboratory Reagent For In Vitro Research Use Only	
Not for resale without prior written consent from LifeSpan BioSciences, Inc.	
Created on 9/23/2014	
© 2014 LifeSpan BioSciences	