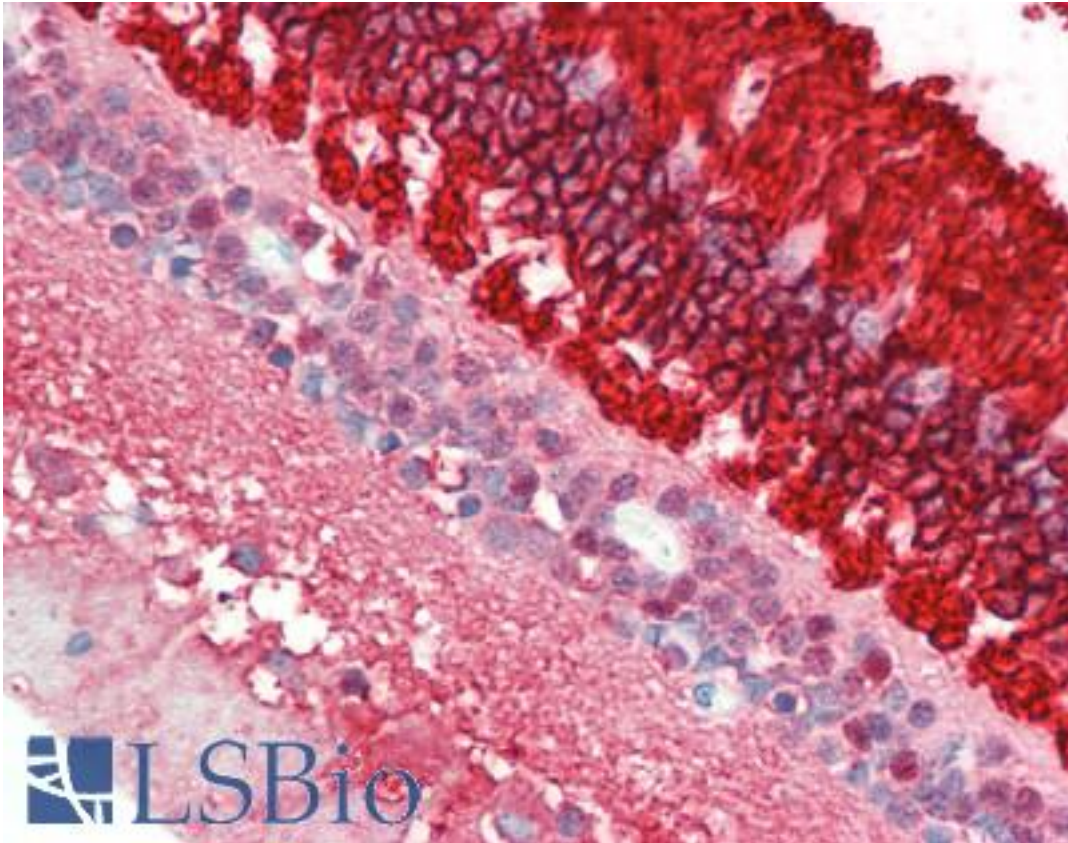


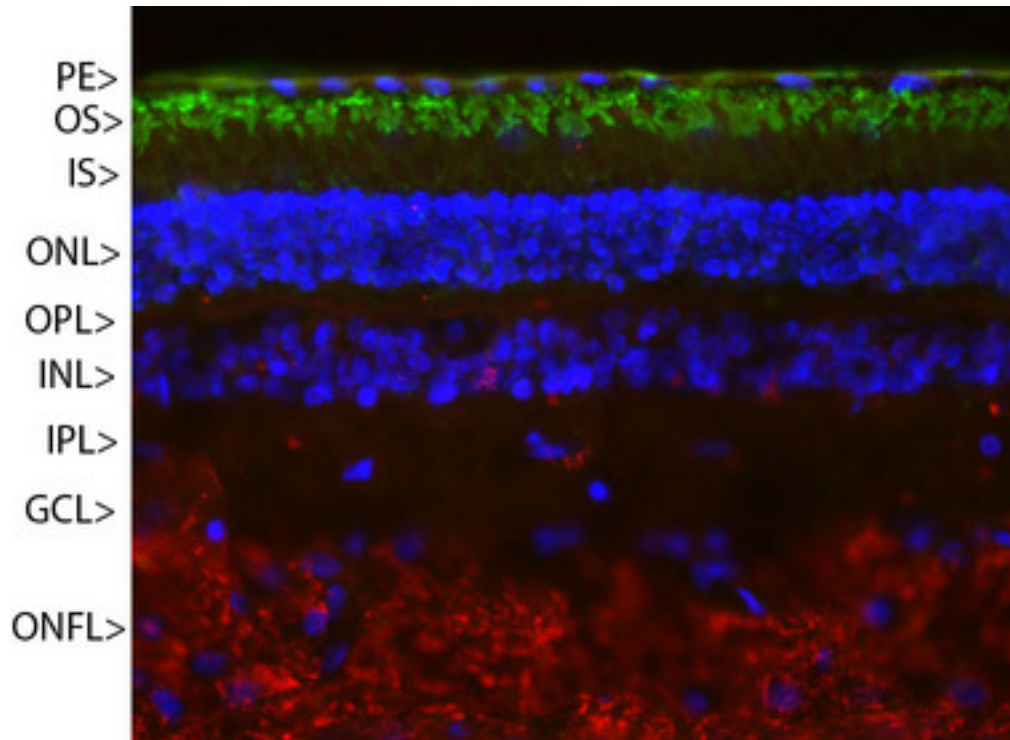
Rhodopsin / RHO Mouse anti-Human Monoclonal (A531) Antibody - LS-B10409 - LSBio	
CatalogID:	LS-B10409
Validation:	This antibody replaces catalog number LS-C204579. It has been validated for use in the following assays: IHC-P.
Target:	rhodopsin
Synonyms:	RHO Antibody, CSNBAD1 Antibody, OPN2 Antibody, Rhodopsin Antibody, RP4 Antibody, Opsin 2, rod pigment Antibody, Opsin-2 Antibody
Family / Subfamily:	GPCR / Opsin
Host	RHO antibody was produced in Mouse
Clonality:	Monoclonal
Isotype:	IgG1,k
Clone Name:	A531
Immunogen Species:	Rhodopsin / RHO antibody was raised against Human
Reactivity:	Human, Mouse, Rat, Bovine, Pig
Purification:	Protein G purified
Presentation:	PBS, 10 mM sodium azide.
Recommended Storage:	+4°C or -20°C, Avoid repeated freezing and thawing.
Usage Summary:	Try at dilutions of ~1:1000 for immunofluorescence. For western blots try at 1:5000. A suitable control tissue is retinal extracts. Rhodopsin run at 35 kDa on SDS-PAGE gels.
Uses:	IHC (1:1000), IHC - Paraffin (10 µg/ml), Immunofluorescence (1:1000), Western blot (1:5000) (Optimal dilution to be determined by the researcher)
Size:	50 µl

Immunohistochemistry Image:



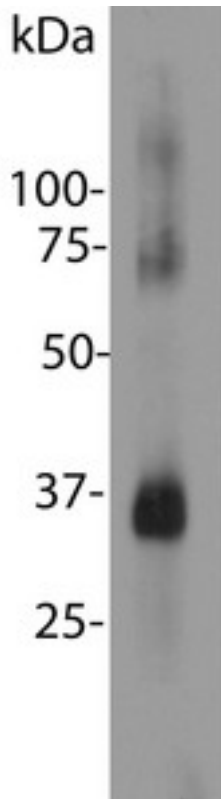
Human Retina: Formalin-Fixed, Paraffin-Embedded (FFPE)

Immunohistochemistry Image:



Pig retinal section stained with Rhodopsin / RHO antibody (green) and counterstained with rabbit polyclonal antibody to neurofilament RPCA-NF-M (red) and DNA (blue). Rhodopsin is most abundant in the outer segments of retina (OS), NF-M is abundant in the optic nerve fiber layer (ONFL), but seen in processes and neurons in other regions also. Other layers are pigmented epithelium (PE), outer and inner nuclear layers (ONL, INL), outer and inner plexiform layers (OPL, IPL) and ganglion cell layer (GCL).

Western Blot Image:



Blot of bovine retinal extracts probed with Rhodopsin / RHO antibody. The antibody stains a band corresponding to retinal rhodopsin at about 35kDa. Bands about 70 kDa and 140 kDa are aggregated forms of rhodopsin. Note, due to the highly hydrophobic nature of rhodopsin, it is important not to boil a sample containing it in SDS-PAGE sample buffer, as this will result in more extensive aggregation of the rhodopsin protein.

Requested From:

Japan

Laboratory Reagent For In Vitro Research Use Only

Not for resale without prior written consent from LifeSpan BioSciences, Inc.

Created on 9/23/2014

© 2014 LifeSpan BioSciences