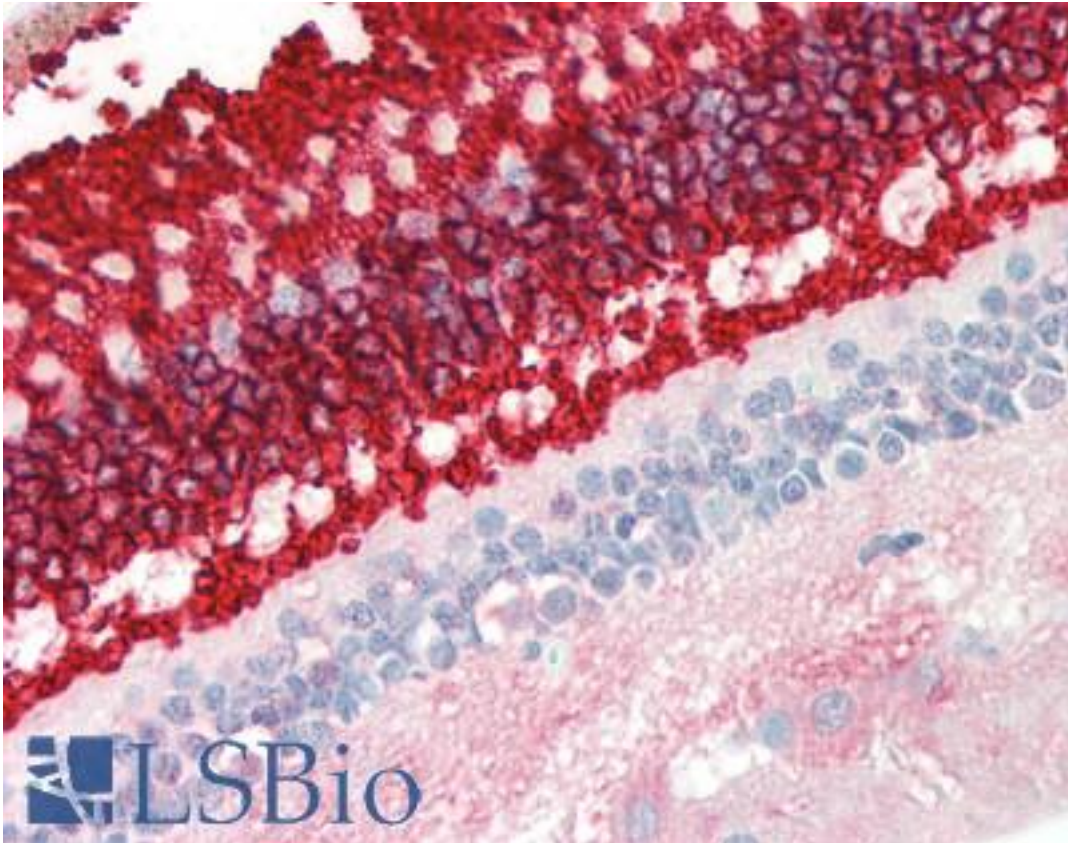


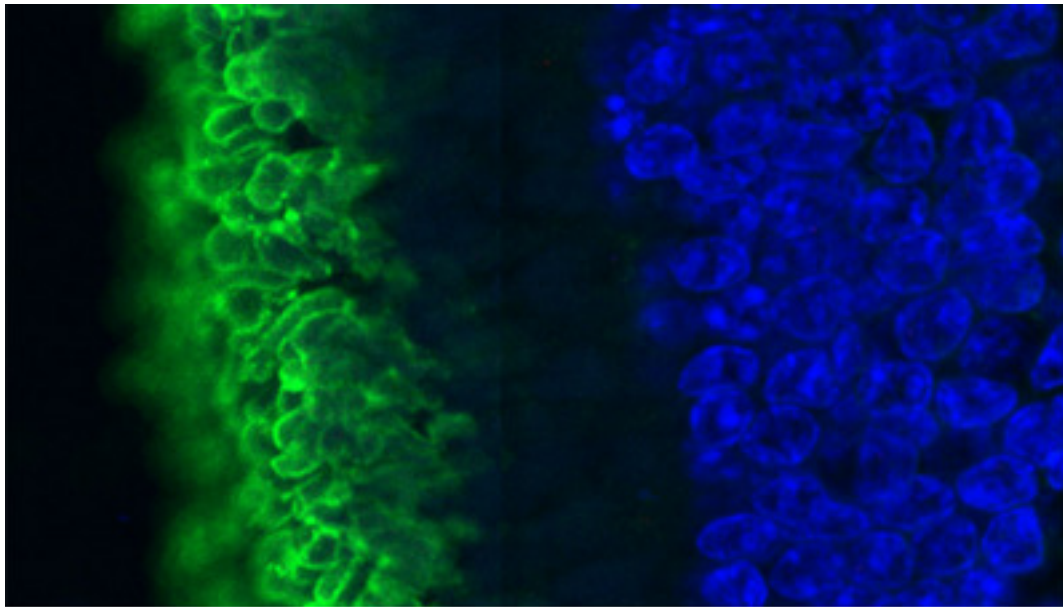
Rhodopsin / RHO Mouse anti-Human Monoclonal (B630) Antibody - LS-B10408 - LSBio	
CatalogID:	LS-B10408
Validation:	This antibody replaces catalog number LS-C204581. It has been validated for use in the following assays: IHC-P.
Target:	rhodopsin
Synonyms:	RHO Antibody, CSNBAD1 Antibody, OPN2 Antibody, Rhodopsin Antibody, RP4 Antibody, Opsin 2, rod pigment Antibody, Opsin-2 Antibody
Family / Subfamily:	GPCR / Opsin
Host	RHO antibody was produced in Mouse
Clonality:	Monoclonal
Isotype:	IgG1,k
Clone Name:	B630
Immunogen Species:	Rhodopsin / RHO antibody was raised against Human
Reactivity:	Human, Mouse, Rat, Bovine, Pig
Purification:	Protein G purified
Presentation:	PBS, 10 mM sodium azide.
Recommended Storage:	+4°C or -20°C, Avoid repeated freezing and thawing.
Usage Summary:	Try at dilutions of ~1:1000 for immunofluorescence. For western blots try at 1:5000. A suitable control tissue is retinal extracts. Rhodopsin run at 35 kDa on SDS-PAGE gels.
Uses:	IHC - Paraffin (10 µg/ml), ICC (1:1000), Immunofluorescence (1:1000), Western blot (1:5000) (Optimal dilution to be determined by the researcher)
Size:	50 µl

Immunohistochemistry Image:



Human Retina: Formalin-Fixed, Paraffin-Embedded (FFPE)

Immunocytochemistry Image:



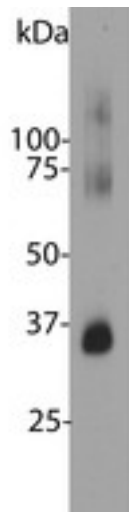
ROS

RIS

ONL

High magnification confocal image of pig retinal section stained with Rhodopsin / RHO antibody (Green). Rhodopsin is most abundant in the rod outer segments (ROS) of retina, clearly localized in rod membranes. The rod inner segments (RIS) and rod nuclei in the outer nuclear layer (ONL) are also seen in this image. Nuclear DNA was stained with DAPI (blue).

Western Blot Image:



Blot of bovine retinal extracts probed with Rhodopsin / RHO antibody. The antibody stains a band corresponding to retinal rhodopsin at about 35kDa. Bands about 70 kDa and 140 kDa are aggregated forms of rhodopsin. Note, due to the highly hydrophobic nature of rhodopsin, it is important to avoid boiling samples containing this protein in SDS-PAGE sample buffer, as this will result in even more extensive aggregation of the rhodopsin protein and appearance of more of this high molecular weight material.

Requested From:

Japan

Laboratory Reagent For In Vitro Research Use Only

Not for resale without prior written consent from LifeSpan BioSciences, Inc.

Created on 9/23/2014

© 2014 LifeSpan BioSciences