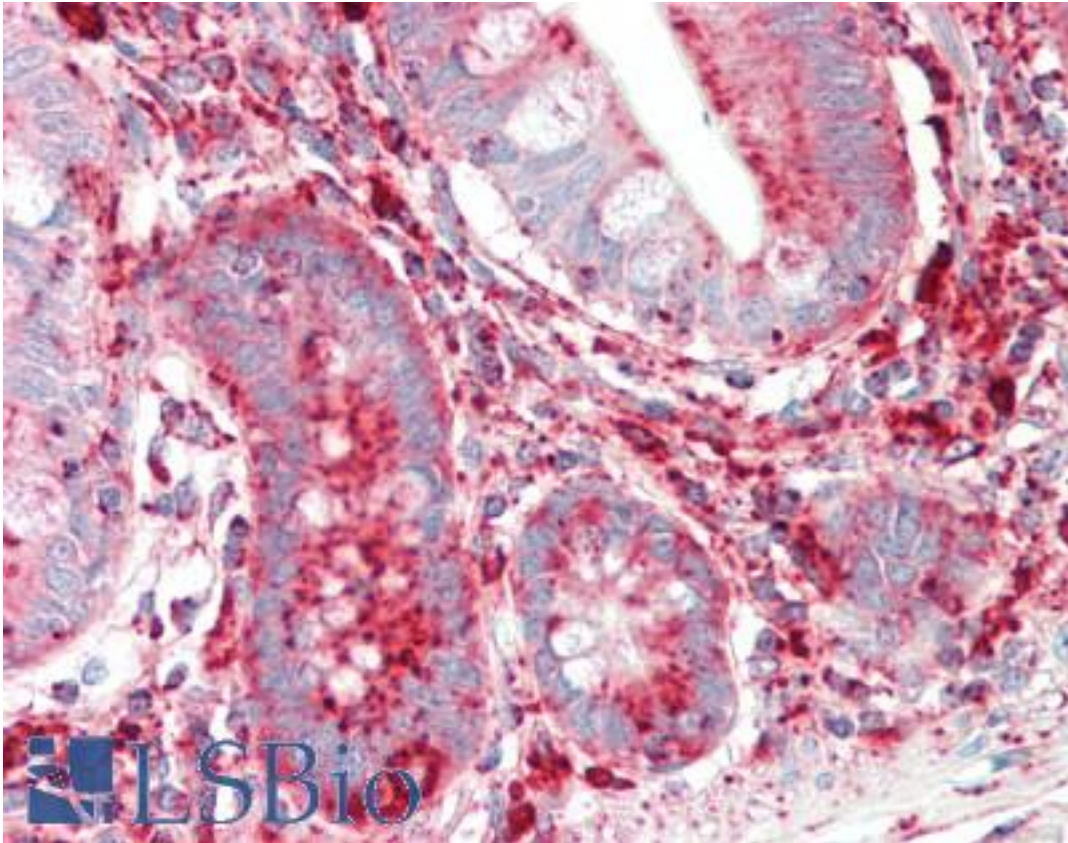


LAMP1 / CD107a Mouse anti-Human Monoclonal (6E2) Antibody - LS-B10407 - LSBio

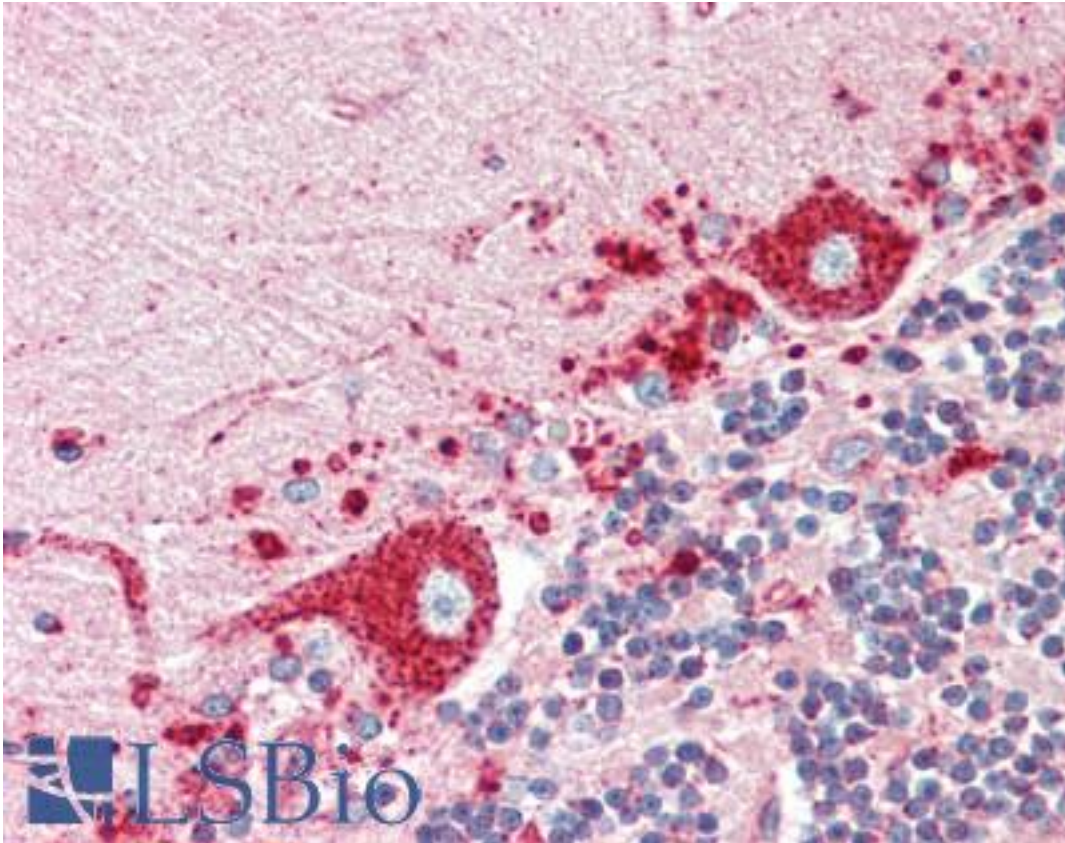
CatalogID:	LS-B10407
Validation:	This antibody replaces catalog number LS-C204537. It has been validated for use in the following assays: IHC-P.
Target:	lysosomal-associated membrane protein 1 (LAMP1)
Synonyms:	LAMP1 Antibody, CD107a Antibody, CD107a antigen Antibody, LAMP-1 Antibody, LGP120 Antibody, LAMPA Antibody
Host	LAMP1 antibody was produced in Mouse
Clonality:	Monoclonal
Isotype:	IgG1
Clone Name:	6E2
Immunogen Species:	LAMP1 / CD107a antibody was raised against Human
Reactivity:	Human, Mouse, Rat, Bovine, Pig
Purification:	Affinity purified
Presentation:	PBS, 10 mM sodium azide.
Recommended Storage:	+4°C or -20°C, Avoid repeated freezing and thawing.
Usage Summary:	The antibody solution can be used at dilutions of at least 1:2000 in immunofluorescence experiments. In western blotting using chemiluminescence it can be used at dilutions of 1:10000 or lower.
Uses:	IHC - Paraffin (1:50), ICC (1:2000), Immunofluorescence (1:2000), Western blot (1:10000) (Optimal dilution to be determined by the researcher)
Size:	50 µl
Concentration:	1 mg/ml

Immunohistochemistry Image:



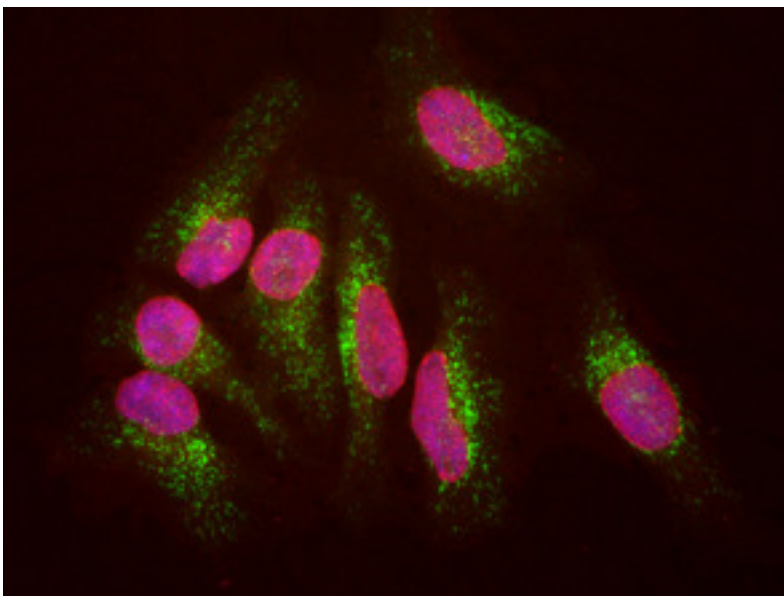
Human Small Intestine: Formalin-Fixed, Paraffin-Embedded (FFPE)

Immunohistochemistry Image:



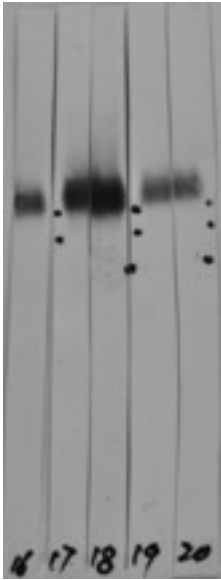
Human Brain, Cerebellum: Formalin-Fixed, Paraffin-Embedded (FFPE)

Immunocytochemistry Image:



HeLa cells staining with CD107a / LAMP1 antibody (green), and counterstained with chicken polyclonal antibody to Lamin A/C (red) and DNA (blue). The CD107a / LAMP1 antibody reveals strong cytoplasmic staining of lysosomes and early endosomes, while the Lamin A/C antibody binds to the nuclear lamina. Since both DNA (blue) and Lamin A/C (red) are associated with the nuclear compartment, this region appears crimson in this image.

Western Blot Image:



Western strip blots of HeLa cell crude extracts with two different preparations of CD107a / LAMP1 antibody in strips 17 and 18. Both preparations bind to a diffuse band running at between ~90kDa and ~120kDa as expected, and show no appreciable cross reactivity with any other protein.

Requested From:

Japan

Laboratory Reagent For In Vitro Research Use Only

Not for resale without prior written consent from LifeSpan BioSciences, Inc.

Created on 9/23/2014

© 2014 LifeSpan BioSciences