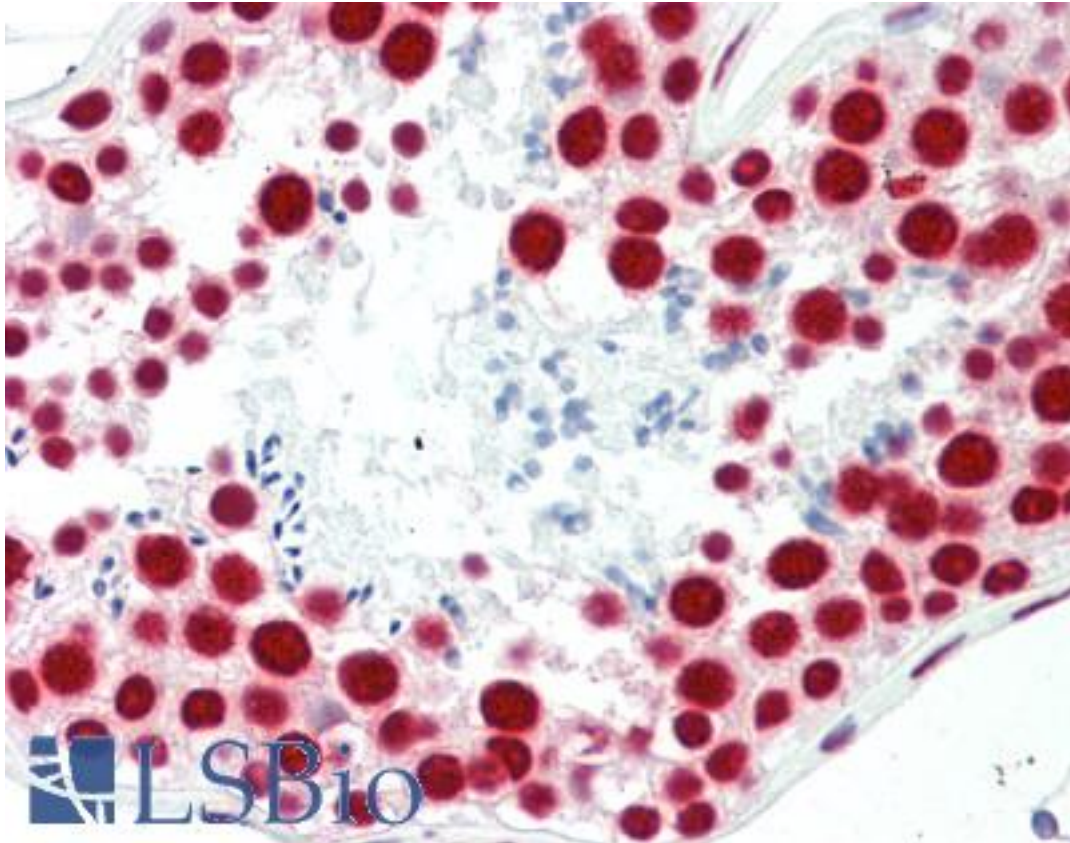


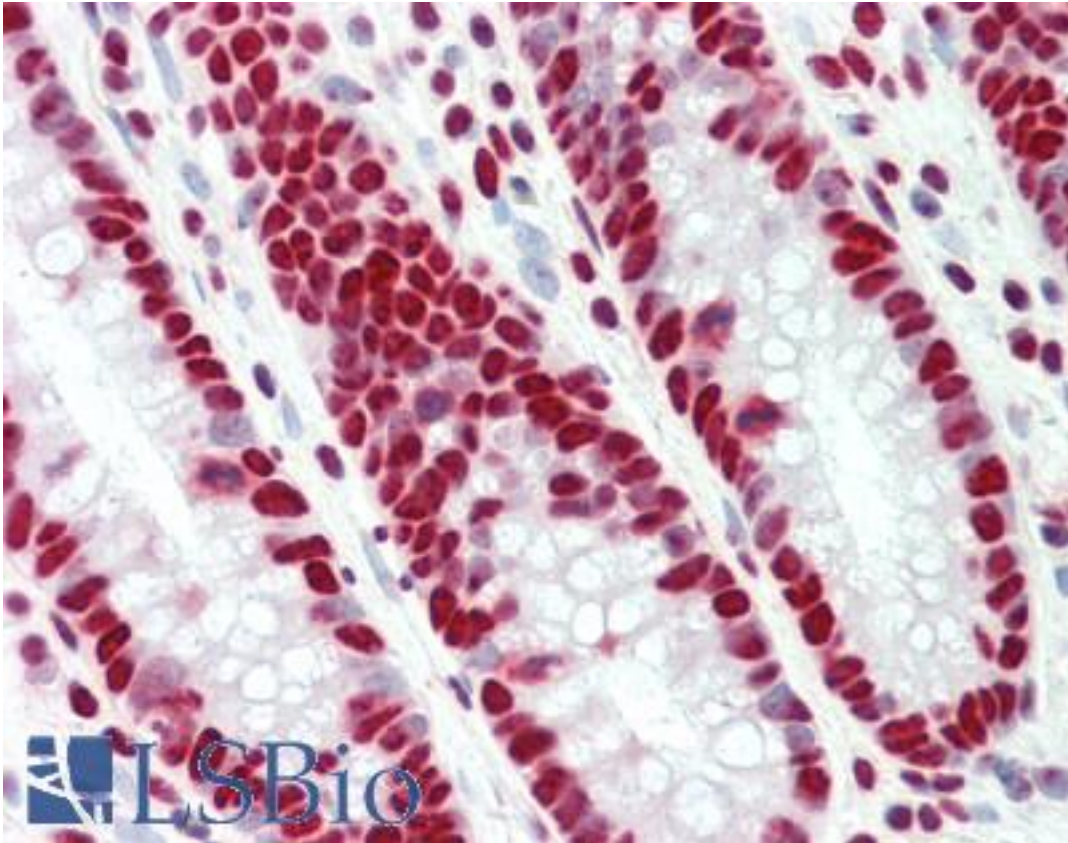
TAF15 Mouse anti-Human Monoclonal (4D71) Antibody - LS-B10405 - LSBio	
<b>CatalogID:</b>	LS-B10405
<b>Validation:</b>	This antibody replaces catalog number LS-C204585. It has been validated for use in the following assays: IHC-P.
<b>Target:</b>	TAF15 RNA polymerase II, TATA box binding protein (TBP)-associated factor, 68kDa
<b>Synonyms:</b>	TAF15 Antibody, RBP56 Antibody, RBP56/CSMF fusion Antibody, RNA-binding protein 56 Antibody, TAFII68 Antibody, TAF2N Antibody, TBP-associated factor 15 Antibody, HTAFII68 Antibody, TAF(II)68 Antibody
<b>Host</b>	TAF15 antibody was produced in Mouse
<b>Clonality:</b>	Monoclonal
<b>Isotype:</b>	IgG1,k
<b>Clone Name:</b>	4D71
<b>Immunogen Species:</b>	TAF15 antibody was raised against Human
<b>Antigen Type:</b>	Recombinant protein
<b>Immunogen:</b>	TAF15 antibody was raised against mCA-4D71 was generated against full length recombinant human TAF15 expressed in and purified from E. coli.
<b>Specificity:</b>	Clone 4D71 recognizes TAF15 specifically both in western blots and in immunocytochemical experiments. On blots clone 4D71 reveals a prominent 68 kDa band, and on cells in tissue culture the antibody stains mainly in nucleus.
<b>Reactivity:</b>	Human
<b>Purification:</b>	Protein G purified
<b>Presentation:</b>	PBS, 0.05% sodium azide.
<b>Recommended Storage:</b>	+4°C or -20°C, Avoid repeated freezing and thawing.
<b>Usage Summary:</b>	The antibody solution can be used at dilutions of 1:500-1:1000 for immunofluorescence. &nbsp;For western blots try at 1:1000. A suitable control tissue is HeLa cell lysates.
<b>Uses:</b>	IHC - Paraffin (10 µg/ml), Immunofluorescence (1:500 - 1:1000), Western blot (1:1000) (Optimal dilution to be determined by the researcher)
<b>Size:</b>	50 µl
<b>Concentration:</b>	1 mg/ml

**Immunohistochemistry Image:**



Human Testis: Formalin-Fixed, Paraffin-Embedded (FFPE)

**Immunohistochemistry Image:**



Human Colon: Formalin-Fixed, Paraffin-Embedded (FFPE)

**Requested From:**

Japan

Laboratory Reagent For In Vitro Research Use Only

Not for resale without prior written consent from LifeSpan BioSciences, Inc.

Created on 9/23/2014

© 2014 LifeSpan BioSciences