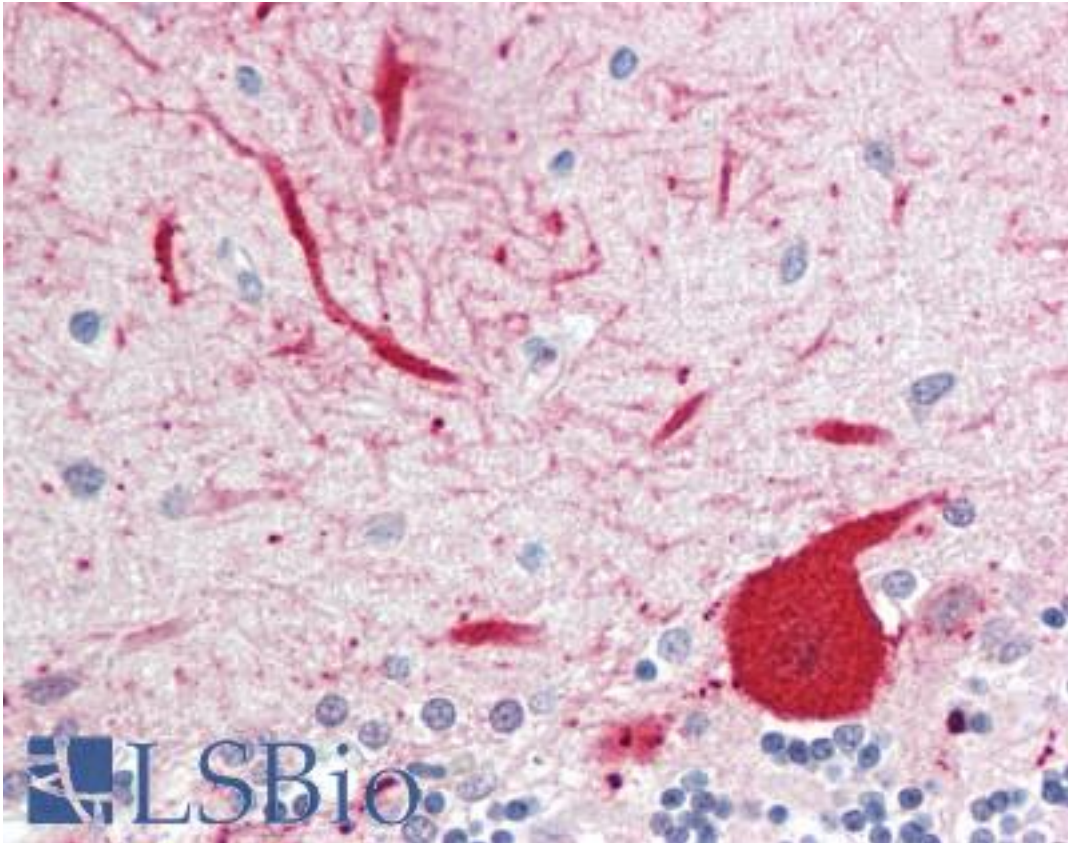


Aldolase 3 / ALDOC Mouse anti-Human Monoclonal (IgG1, k) Antibody - LS-B10404 - LSBio

CatalogID:	LS-B10404
Validation:	This antibody replaces catalog number LS-C204286. It has been validated for use in the following assays: IHC-P.
Target:	aldolase C, fructose-bisphosphate (ALDOC)
Synonyms:	ALDOC Antibody, ALDC Antibody, Aldolase 3 Antibody, Fructoaldolase C Antibody, Brain-type aldolase Antibody
Host	ALDOC antibody was produced in Mouse
Clonality:	Monoclonal
Isotype:	IgG1,k
Clone Name:	IgG1, k
Immunogen Species:	Aldolase 3 / ALDOC antibody was raised against Human
Immunogen:	Aldolase 3 / ALDOC antibody was raised against raised against N-terminal 20 amino acids of the human aldolase C protein (sequence MPHSYPALSAEQKKELSDIA)
Specificity:	Recognizes aldolase C specifically both in western blots and in immunocytochemical experiments. Western blot shows a 40 kD band.
Reactivity:	Human, Bovine
Purification:	Protein G purified
Presentation:	PBS with 0.05% sodium azide.
Recommended Storage:	Short term 4°C, long term aliquot and store at -20°C, avoid freeze thaw cycles. Store undiluted.
Usage Summary:	Western blot control: Brain cell lysates
Uses:	IHC - Paraffin (10 µg/ml), Immunofluorescence (1:500 - 1:1000), Western blot (1:1000 - 1:1000) (Optimal dilution to be determined by the researcher)
Size:	50 µl
Concentration:	1 mg/ml

Immunohistochemistry Image:



Human Brain, Cerebellum: Formalin-Fixed, Paraffin-Embedded (FFPE)

Requested From:

Japan

Laboratory Reagent For In Vitro Research Use Only

Not for resale without prior written consent from LifeSpan BioSciences, Inc.

Created on 9/23/2014

© 2014 LifeSpan BioSciences