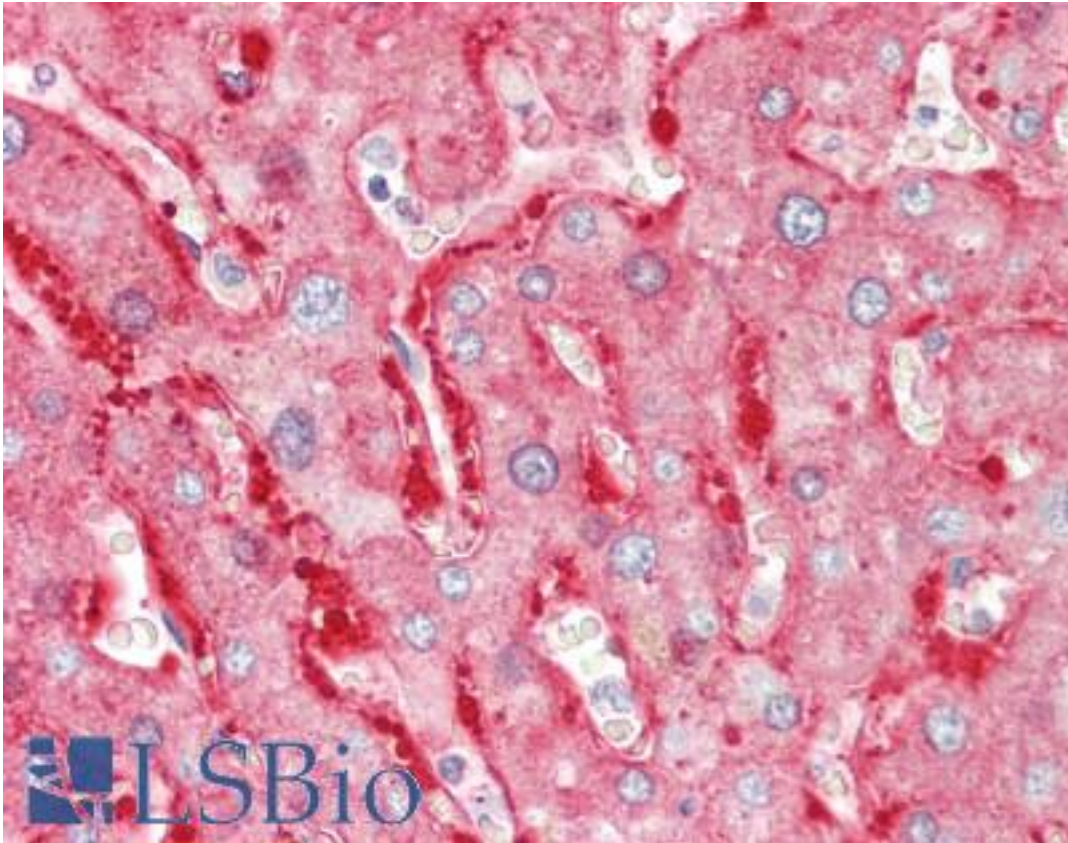


**ALDH1L1 Mouse Monoclonal Antibody - LS-B10403 - LSBio**

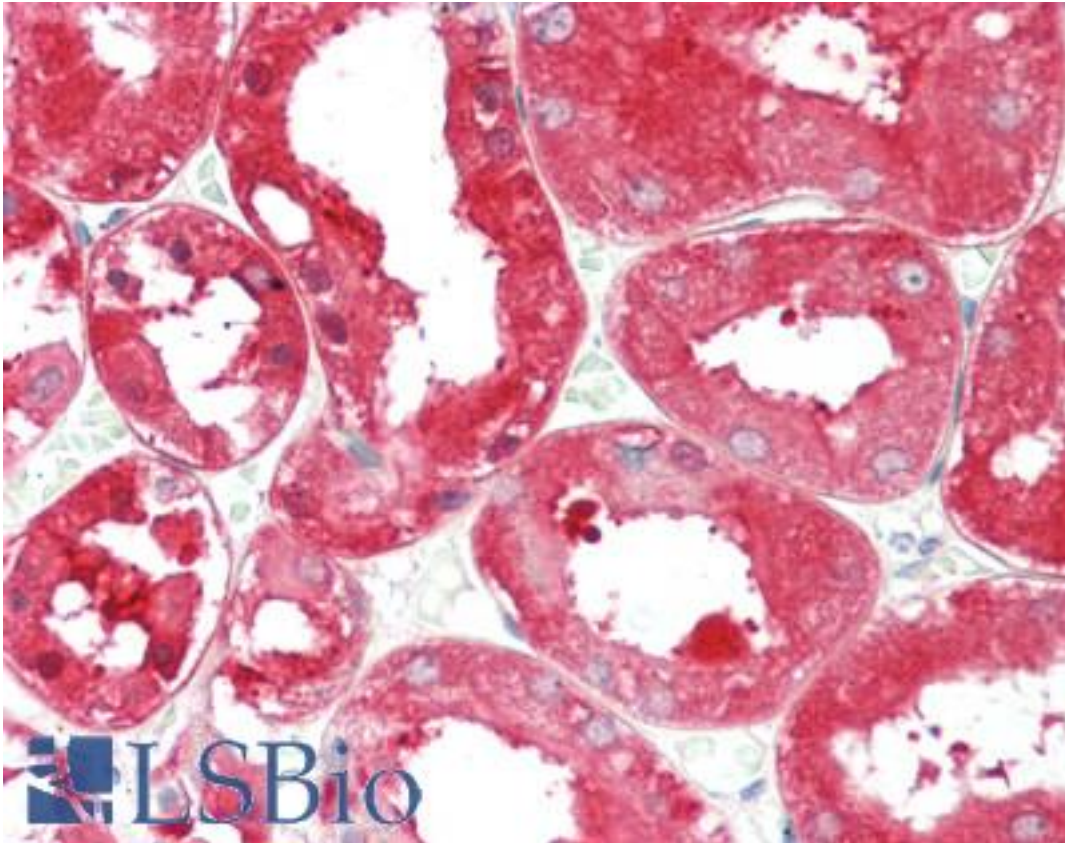
<b>CatalogID:</b>	LS-B10403
<b>Validation:</b>	This antibody replaces catalog number LS-C204295. It has been validated for use in the following assays: IHC-P.
<b>Target:</b>	aldehyde dehydrogenase 1 family, member L1 (ALDH1L1)
<b>Synonyms:</b>	ALDH1L1 Antibody, 10-fTHF Antibody, 10-FTHFDH Antibody, FTHFD Antibody, FDH Antibody
<b>Host</b>	ALDH1L1 antibody was produced in Mouse
<b>Clonality:</b>	Monoclonal
<b>Isotype:</b>	IgG2b
<b>Immunogen:</b>	ALDH1L1 antibody was raised against raised against amino acids 1- 401 of human ALDH1L1 expressed in and purified from E. coli
<b>Reactivity:</b>	Human, Rat
<b>Purification:</b>	Protein G purified
<b>Presentation:</b>	10mM sodium azide
<b>Recommended Storage:</b>	Short term 4°C, long term aliquot and store at -20°C, avoid freeze thaw cycles. Store undiluted.
<b>Uses:</b>	IHC - Paraffin (10 µg/ml), Immunofluorescence (1:2000 - 1:5000), Western blot (1:10000 - 1:20000) (Optimal dilution to be determined by the researcher)
<b>Size:</b>	50 µl
<b>Concentration:</b>	1 mg/ml

**Immunohistochemistry Image:**



Human Liver: Formalin-Fixed, Paraffin-Embedded (FFPE)

**Immunohistochemistry Image:**



Human Kidney: Formalin-Fixed, Paraffin-Embedded (FFPE)

**Requested From:**

Japan

Laboratory Reagent For In Vitro Research Use Only

Not for resale without prior written consent from LifeSpan BioSciences, Inc.

Created on 9/23/2014

© 2014 LifeSpan BioSciences