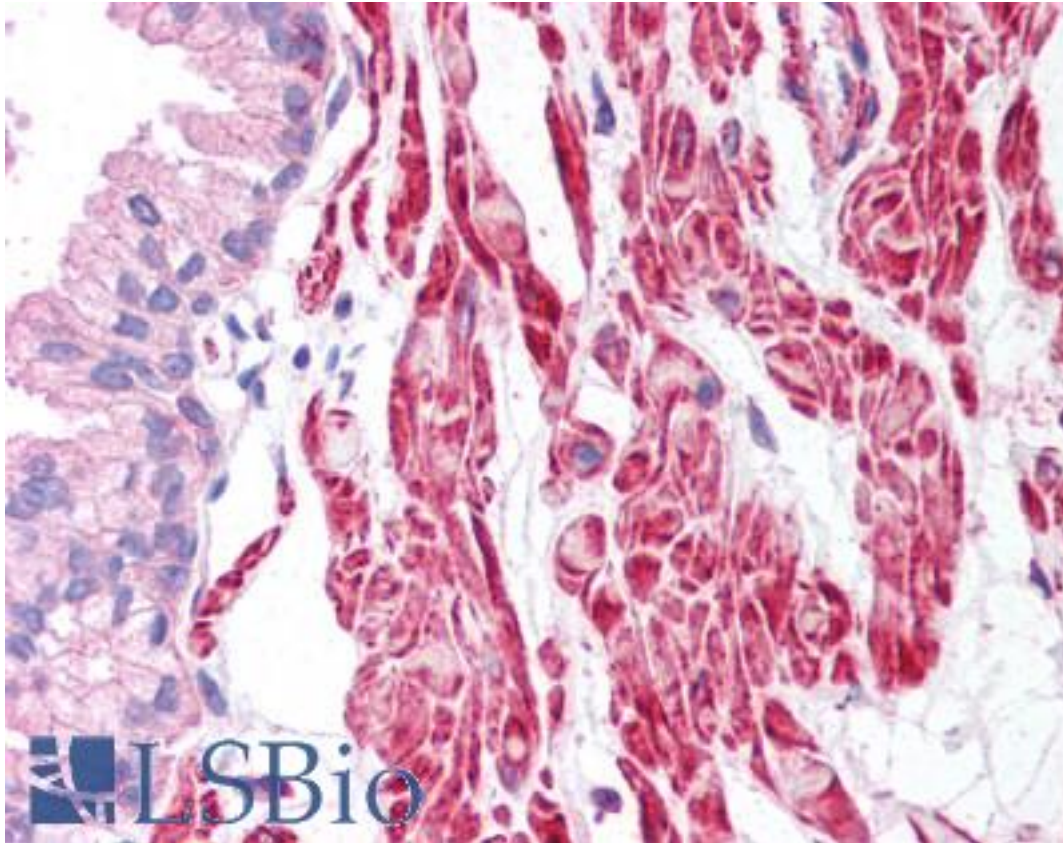


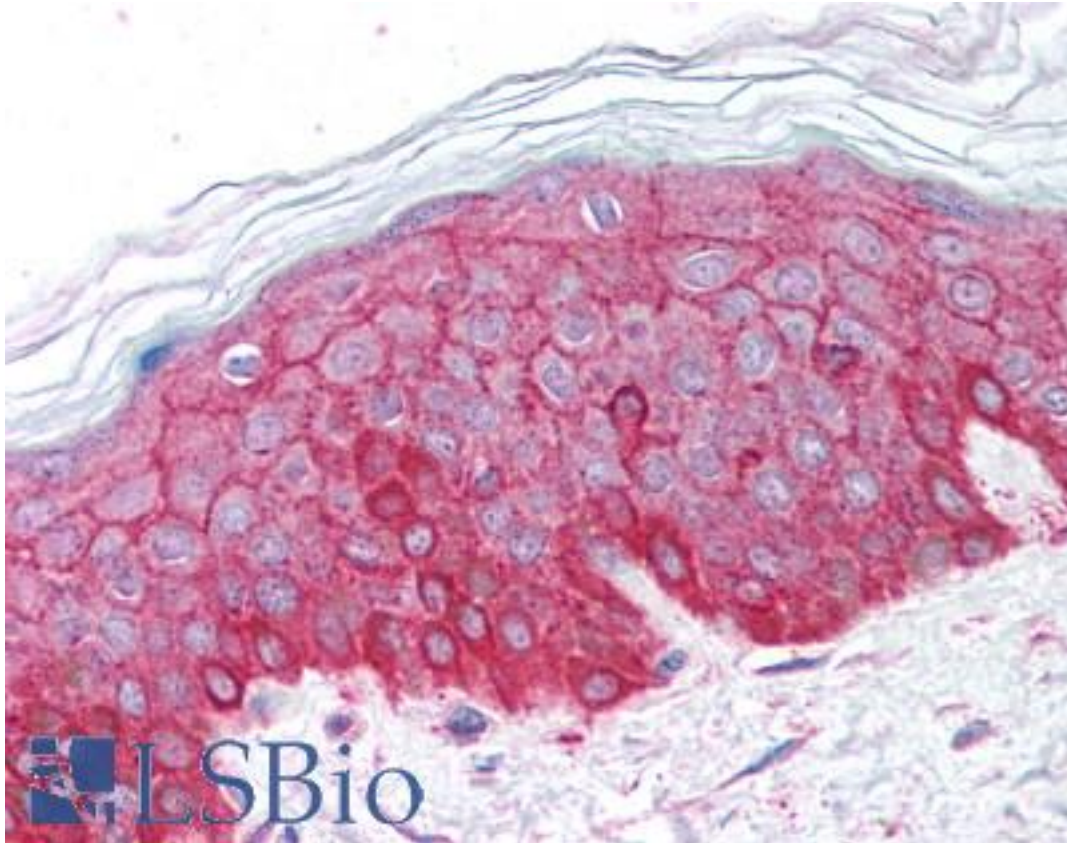
| ACTB / Beta Actin Rabbit anti-Human Polyclonal (C-Terminus) Antibody - LS-B1040 - LSBio |   |
|---|---|
| <b>CatalogID:</b>   | LS-B1040  |
| <b>Validation:</b>  | This antibody replaces catalog number LS-C19587. It has been validated for use in the following assays: IHC.  |
| <b>Target:</b>  | actin, beta (ACTB)  |
| <b>Synonyms:</b>  | ACTB Antibody, Actin, cytoplasmic 1 Antibody, Beta-actin Antibody, Beta actin Antibody, BRWS1 Antibody, Actin, beta Antibody, Beta cytoskeletal actin Antibody, PS1TP5-binding protein 1 Antibody, PS1TP5BP1 Antibody   |
| <b>Host</b>   | ACTB antibody was produced in Rabbit  |
| <b>Clonality:</b>   | Polyclonal  |
| <b>Immunogen Species:</b>   | ACTB / Beta Actin antibody was raised against Human   |
| <b>Antigen Type:</b>  | Synthetic peptide   |
| <b>Immunogen:</b>   | ACTB / Beta Actin antibody was raised against a 16 amino acid peptide from near the carboxy-terminus of human b-actin.  |
| <b>Specificity:</b>   | A sixteen amino acid peptide near the C-terminus of human beta actin  |
| <b>Epitope:</b>   | C-Terminus  |
| <b>Reactivity:</b>  | Human, Mouse, Rat   |
| <b>Purification:</b>  | Immunoaffinity purified   |
| <b>Presentation:</b>  | PBS, 0.02% sodium azide.  |
| <b>Recommended Storage:</b>   | Short term 4°C, long term aliquot and store at -20°C, avoid freeze thaw cycles. Store undiluted.  |
| <b>Usage Summary:</b>   | Immunohistochemistry: LS-B1040 was validated for use in immunohistochemistry on a panel of 21 formalin-fixed, paraffin-embedded (FFPE) human tissues after heat induced antigen retrieval in pH 6.0 citrate buffer. After incubation with the primary antibody, slides were incubated with biotinylated secondary antibody, followed by alkaline phosphatase-streptavidin and chromogen. The stained slides were evaluated by a pathologist to confirm staining specificity. The optimal working concentration for LS-B1040 was determined to be 5 ug/ml. |
| <b>Uses:</b>  | IHC - Paraffin (5 µg/ml), ICC, Western blot (Optimal dilution to be determined by the researcher)   |
| <b>Size:</b>  | 50 µg   |
| <b>Concentration:</b>   | 1 mg/ml   |

**Immunohistochemistry Image:**



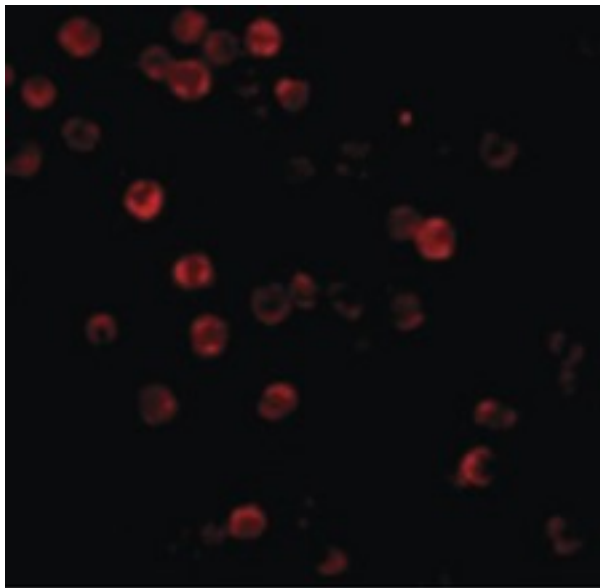
Anti-Beta Actin antibody IHC of human prostate. Immunohistochemistry of formalin-fixed, paraffin-embedded tissue after heat-induced antigen retrieval. Antibody LS-B1040 concentration 5 ug/ml.

**Immunohistochemistry Image:**



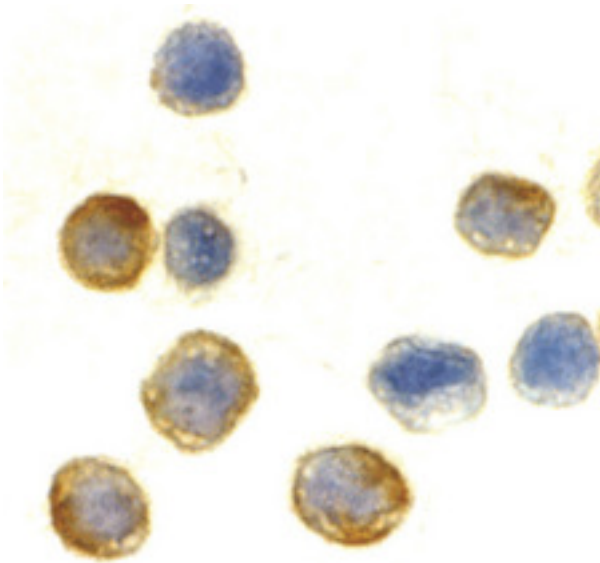
Anti-Beta Actin antibody IHC of human skin. Immunohistochemistry of formalin-fixed, paraffin-embedded tissue after heat-induced antigen retrieval. Antibody LS-B1040 concentration 5 ug/ml.

**Immunofluorescence Image:**



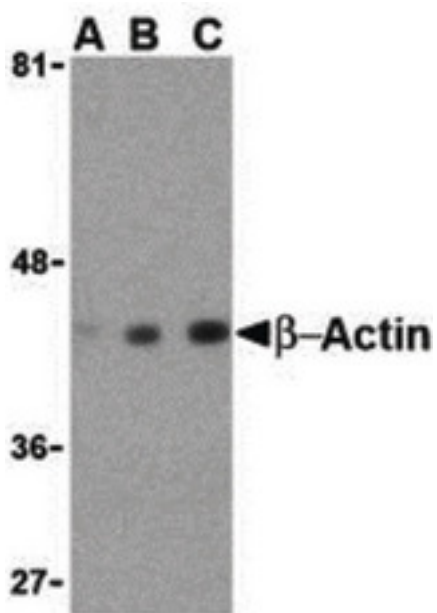
Immunofluorescence of Beta-actin in HeLa cells with Beta-actin antibody at 20 ug/ml.

**Immunocytochemistry Image:**



Immunocytochemistry of beta-actin in HeLa cells with beta-actin antibody at 10ug/ml.

**Western Blot Image:**



Western blot of beta-actin in HeLa cell lysate with beta-actin antibody at (A) 0.5, (B) 1 and (C) 2 ug/ml.

Requested From:

Japan

Laboratory Reagent For In Vitro Research Use Only

Not for resale without prior written consent from LifeSpan BioSciences, Inc.

Created on 9/23/2014

© 2014 LifeSpan BioSciences