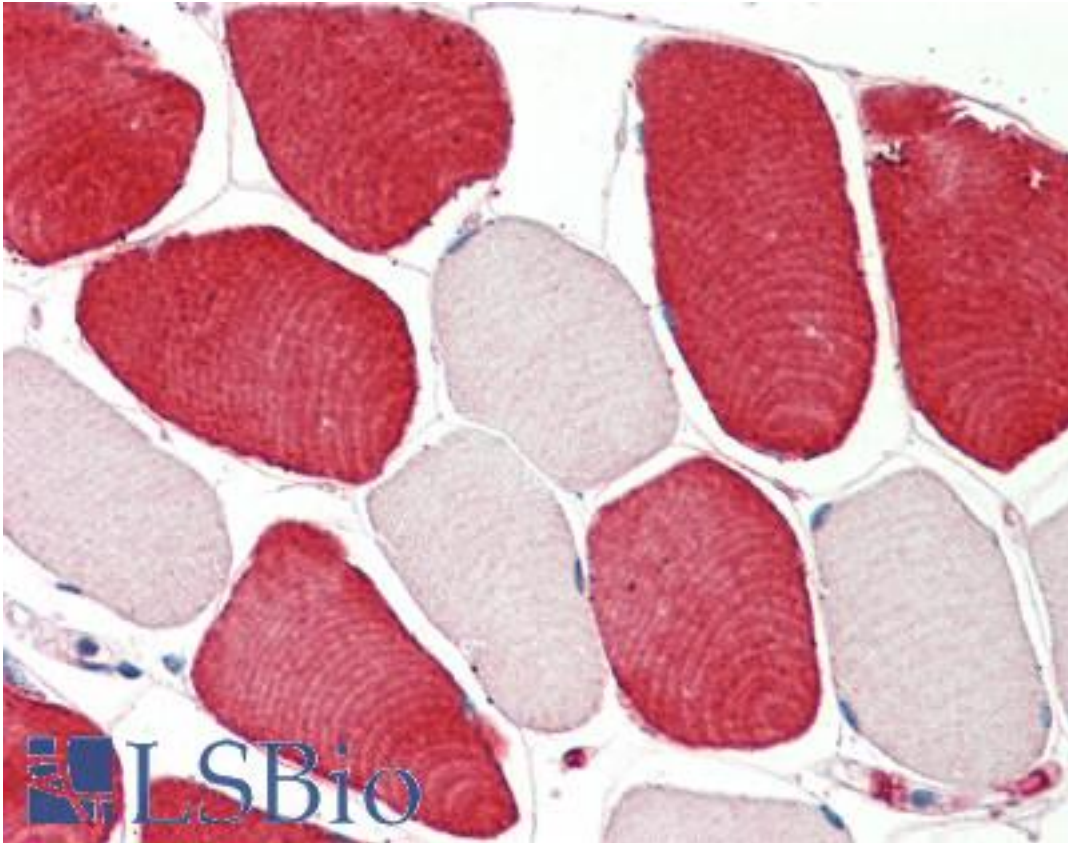


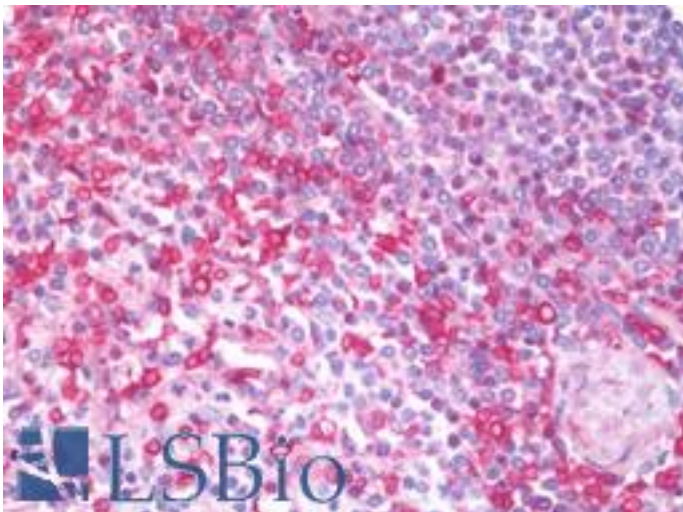
MIA Goat anti-Human Polyclonal (Internal) Antibody - LS-B10397 - LSBio	
CatalogID:	LS-B10397
Validation:	This antibody replaces catalog number LS-C186548. It has been validated for use in the following assays: IHC-P.
Target:	melanoma inhibitory activity (MIA)
Synonyms:	MIA Antibody, CD-RAP Antibody, Melanoma inhibitory activity Antibody
Family / Subfamily:	MIA / not assigned-MIA
Host	MIA antibody was produced in Goat
Clonality:	Polyclonal
Immunogen Species:	MIA antibody was raised against Human
Antigen Type:	Synthetic peptide
Immunogen:	MIA antibody was raised against synthetic peptide PKLADRKLCADQE from an internal region of human MIA (NP_006524.1). Percent identity by BLAST analysis: Hamster, Bovine, Rabbit, Pig (85%).
Specificity:	Human MIA. The immunizing peptide represents the N terminus of the mature protein. Reported variants represent identical protein: NP_006524.1, NP_001189482.1,
Epitope:	Internal
Reactivity:	Human
Purification:	Immunoaffinity purified
Presentation:	Tris-buffered saline, pH 7.3, 0.5% BSA, 0.02% sodium azide
Recommended Storage:	Store at -20°C. Minimize freezing and thawing.
Usage Summary:	Peptide ELISA: antibody detection limit dilution 1:64000. Western blot: Approx 14kD band observed in Human Glioma lysates (calculated MW of 14.5kD according to NP_006524.1). Recommended concentration: 1-3 ug/ml.
Uses:	IHC - Paraffin (5 µg/ml), Western blot (1 - 3 µg/ml), ELISA (1:64000) (Optimal dilution to be determined by the researcher)
Size:	50 µg
Concentration:	0.5 mg/ml

Immunohistochemistry Image:



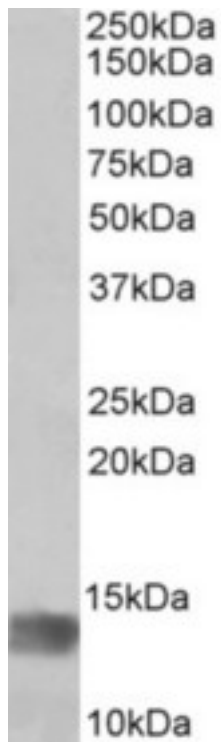
Human Skeletal Muscle: Formalin-Fixed, Paraffin-Embedded (FFPE)

Immunohistochemistry Image:



Human Spleen: Formalin-Fixed, Paraffin-Embedded (FFPE)

Western Blot Image:



MIA antibody (1 ug/ml) staining of Human Glioma lysate (35 ug protein in RIPA buffer). Primary incubation was 1 hour. Detected by chemiluminescence.

Requested From:

Japan

Laboratory Reagent For In Vitro Research Use Only

Not for resale without prior written consent from LifeSpan BioSciences, Inc.

Created on 9/23/2014

© 2014 LifeSpan BioSciences