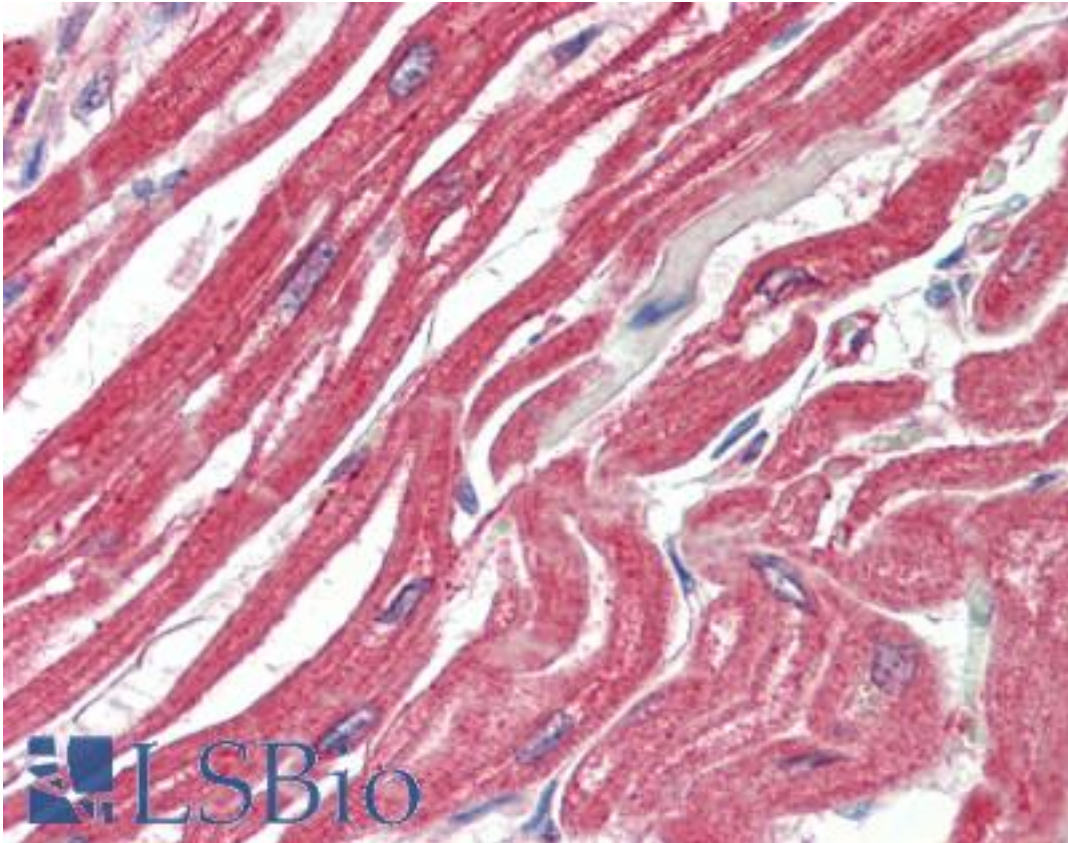


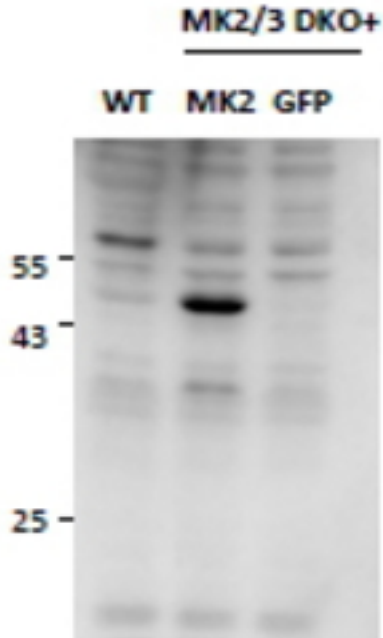
MAPKAPK2 / MK2 Goat anti-Human Polyclonal (C-Terminus) Antibody - LS-B10396 - LSBio	
<b>CatalogID:</b>	LS-B10396
<b>Validation:</b>	This antibody replaces catalog number LS-C186550. It has been validated for use in the following assays: IHC-P.
<b>Target:</b>	mitogen-activated protein kinase-activated protein kinase 2 (MAPKAPK2)
<b>Synonyms:</b>	MAPKAPK2 Antibody, MK-2 Antibody, MAP KAP Kinase 2 Antibody, MAPKAP kinase 2 Antibody, MK2 Antibody, MAPKAP-K2 Antibody, MAPKAPK-2 Antibody
<b>Family / Subfamily:</b>	Protein Kinase / MAPKAPK
<b>Host</b>	MAPKAPK2 antibody was produced in Goat
<b>Clonality:</b>	Polyclonal
<b>Immunogen Species:</b>	MAPKAPK2 / MK2 antibody was raised against Human
<b>Antigen Type:</b>	Synthetic peptide
<b>Immunogen:</b>	MAPKAPK2 / MK2 antibody was raised against synthetic peptide C-SRVLKEDKERWED from an internal region (near C-terminus) of human MAPKAPK2 / MK2 (NP_004750.1; NP_116584.2). Percent identity by BLAST analysis: Hamster, Panda, Bovine, Dog, Cat, Horse, Rabbit, Pig, Opossum, Guinea pig, Platypus (100%).
<b>Specificity:</b>	Human MAPKAPK2 / MK2. This antibody is expected to recognize both reported isoforms (NP_004750.1; NP_116584.2).
<b>Epitope:</b>	C-Terminus
<b>Reactivity:</b>	Human, Mouse, Bovine, Dog, Guinea pig, Hamster, Horse, Pig, Rabbit
<b>Purification:</b>	Immunoaffinity purified
<b>Presentation:</b>	Tris-buffered saline, pH 7.3, 0.5% BSA, 0.02% sodium azide
<b>Recommended Storage:</b>	Store at -20°C. Minimize freezing and thawing.
<b>Usage Summary:</b>	Peptide ELISA: antibody detection limit dilution 1:128000. Western blot: Approx 60kD band observed in Mouse Embryonic Fibroblasts (MEF) lysates, not present in the knockout MEFs and reappearing as a 45kD band upon reintroduction of MK2 gene expression through viral transduction (calculated MW of 44.0kD according to Mouse NP_032577.1). The observed molecular weights correspond to earlier findings in literature with different antibodies (Menon et al, Cell Motil Cytoskeleton. 2009 Dec;66(12):1041-7. PMID: 19743408). There is no cross-reactivity to MK5. Data obtained from Dr. M. B. Menon, Inst. Biochemistry, Hannover Medical School, Germany. Recommended concentration: 0.5-2 ug/ml. Immunoprecipitation: MK2/MK3 double knockout MEFs retrovirally transduced with MK2 or empty vector were lysed from confluent plates and used for IP with 1.5 ug EB11929 or EB11930. Western blots of the IP were labeled with rabbit anti-MK2 (CST). An approx 45kD of MK2 is only precipitated from lysates of those KO MEFs that have been rescued by the MK2 expression construct as described in PMID: 19743408. Data obtained from Dr. M. B. Menon, Inst. Biochemistry, Hannover Medical School, Germany.
<b>Uses:</b>	IHC - Paraffin (5 µg/ml), Western blot (0.5 - 2 µg/ml), ELISA (1:128000) (Optimal dilution to be determined by the researcher)
<b>Size:</b>	50 µg
<b>Concentration:</b>	0.5 mg/ml

**Immunohistochemistry Image:**



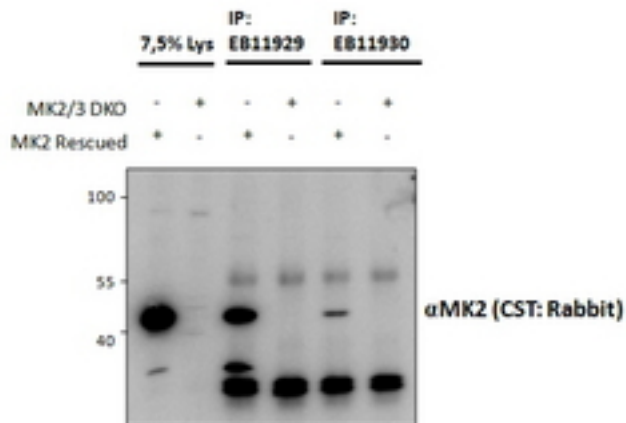
Human Heart: Formalin-Fixed, Paraffin-Embedded (FFPE)

**Western Blot Image:**



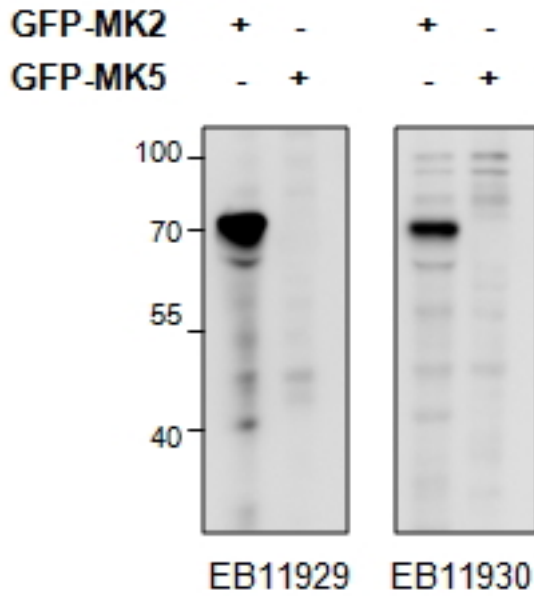
MAPKAPK2 antibody (0.5 ug/ml) staining of MEF lysates (35 ug protein in RIPA buffer), from double KO mice in second and third lanes and rescued by introduction of MK2 gene in second lane. Primary incubation was 2 hour. Detected by chemiluminescence.

**Western Blot Image:**



MAPKAPK2 antibody and EB11930 (1.5 ug) immunoprecipitations from lysates of MK2/MK3 double knockout MEFs, with (third and fifth lanes) and without (fourth and sixth lanes) rescued MK2 expression through retroviral transduction. The corresponding lysates (first and second lane resp.) were analyzed in parallel in this Western blot labeled with rabbit anti-MK2.

**Immunoprecipitation Image:**



MAPKAPK2 antibody HEK293 overexpressing Mouse MK2 fused to GFP or overexpressing MK5 fused to GFP and probed with (0.5 ug/ml) in the left panel and with EB11930 (0.5 ug/ml) in the right panel.

**Requested From:**

Japan

Laboratory Reagent For In Vitro Research Use Only

Not for resale without prior written consent from LifeSpan BioSciences, Inc.

Created on 9/23/2014

© 2014 LifeSpan BioSciences