

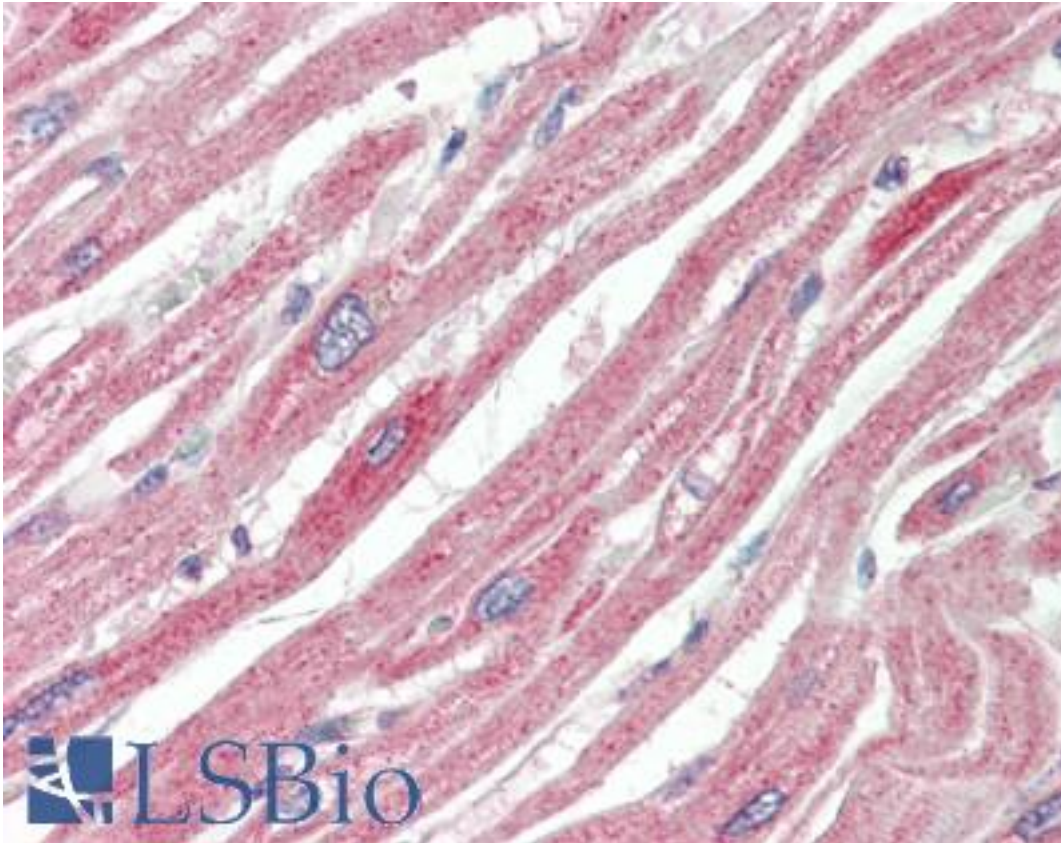
MAPK6 / ERK3 Goat anti-Human Polyclonal (C-Terminus) Antibody - LS-B10395 - LSBio

CatalogID:	LS-B10395
Validation:	This antibody replaces catalog number LS-C186492. It has been validated for use in the following assays: IHC-P.
Target:	mitogen-activated protein kinase 6 (MAPK6)
Synonyms:	MAPK6 Antibody, ERK-3 Antibody, MAP kinase 6 Antibody, MAPK 6 Antibody, p97 -MAPK Antibody, PRKM6 Antibody, MAP kinase isoform p97 Antibody, ERK3 Antibody, HsT17250 Antibody, p97MAPK Antibody
Family / Subfamily:	Protein Kinase / MAPK
Host	MAPK6 antibody was produced in Goat
Clonality:	Polyclonal
Immunogen Species:	MAPK6 / ERK3 antibody was raised against Human
Antigen Type:	Synthetic peptide
Immunogen:	MAPK6 / ERK3 antibody was raised against synthetic peptide C-HSPVGSPLKSIQ from an internal region (near C-terminus) of human MAPK6 / ERK3 (NP_002739.1). Percent identity by BLAST analysis: Hamster, Elephant, Panda, Dog, Bovine, Cat, Horse, Rabbit, Pig, Opossum, Turkey, Zebra finch, Chicken, Platypus, Lizard (100%); Rat, Xenopus (92%).
Specificity:	Human MAPK6 / ERK3. Reported variants represent identical protein (NP_056621.4; NP_081694.1).
Epitope:	C-Terminus
Reactivity:	Human, Mouse, Bovine, Dog, Hamster, Horse, Pig, Rabbit, Chicken
Purification:	Immunoaffinity purified
Presentation:	Tris-buffered saline, pH 7.3, 0.5% BSA, 0.02% sodium azide
Recommended Storage:	Store at -20°C. Minimize freezing and thawing.
Usage Summary:	Peptide ELISA: antibody detection limit dilution 1:128000. Western blot: In transfected HEK293 transiently expressing Mouse ERK3 / Mapk6 fused to GFP the band with expected size is intensified when co-expressed with MK5 as the stabilizer for ERK3. No bands are observed in transfected HEK293 with empty vector and the same band is observed using anti-GFP antibody. Data obtained from Dr. M. B. Menon, Inst. Biochemistry, Hannover Medical School, Germany. Recommended concentration, 0.5-1 ug/ml. Immunoprecipitation: MK5/ERK3 double knockout Mouse Embryonic Fibroblasts (MEFs) retrovirally transduced with MK5/ERK3 or empty vector (GFP) were lysed from confluent plates and used for IP with 1.5 ug EB11926. Western blots of the IP were labeled with rabbit anti-ERK3 serum (CST) or with mouse anti-MK5 (SC). An approx 100kD of ERK3 is only precipitated from lysates of those KO MEFs that have been rescued by the ERK3/MK5 expression construct as described in as described in PMID: 22508986. Data obtained from Dr. M. B. Menon, Inst. Biochemistry, Hannover Medical School, Germany.
Uses:	IHC - Paraffin (10 µg/ml), Western blot (0.5 - 1 µg/ml), ELISA (1:128000) (Optimal dilution to be determined by the researcher)
Size:	50 µg

Concentration:

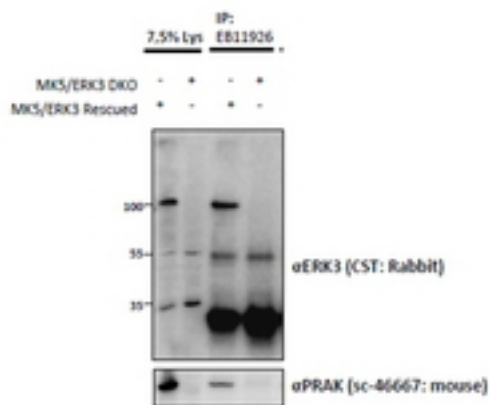
0.5 mg/ml

Immunohistochemistry Image:



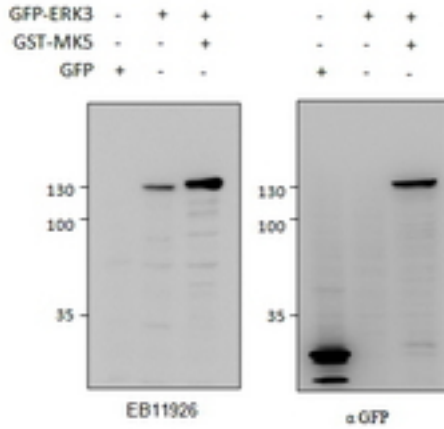
Human Heart: Formalin-Fixed, Paraffin-Embedded (FFPE)

Western Blot Image:



MAPK6 antibody (1.5 ug) immunoprecipitation from lysates of MK5/ERK3 double knockout MEFs, with (third lane) and without (fourth lane) rescued MK5/ERK3 expression through retroviral transduction. The corresponding lysates (first and second lane resp.) were analyzed in parallel in this Western blot labeled with rabbit anti-Erk3 (and co-precipitation was measured using mouse anti-MK5/PRAK in the lower panel).

Western Blot Image:



MAPK6 antibody HEK293 lysate (10 ug protein in RIPA buffer) overexpressing GFP-fused Mouse ERK3 probed with (0.5 ug/ml) in left panel and with anti-GFP in right panel. GFP-only expression in the first lane. Primary incubations were for 2 hours. Detected by chemiluminescence.

Requested From:

Japan

Laboratory Reagent For In Vitro Research Use Only

Not for resale without prior written consent from LifeSpan BioSciences, Inc.

Created on 9/23/2014

© 2014 LifeSpan BioSciences