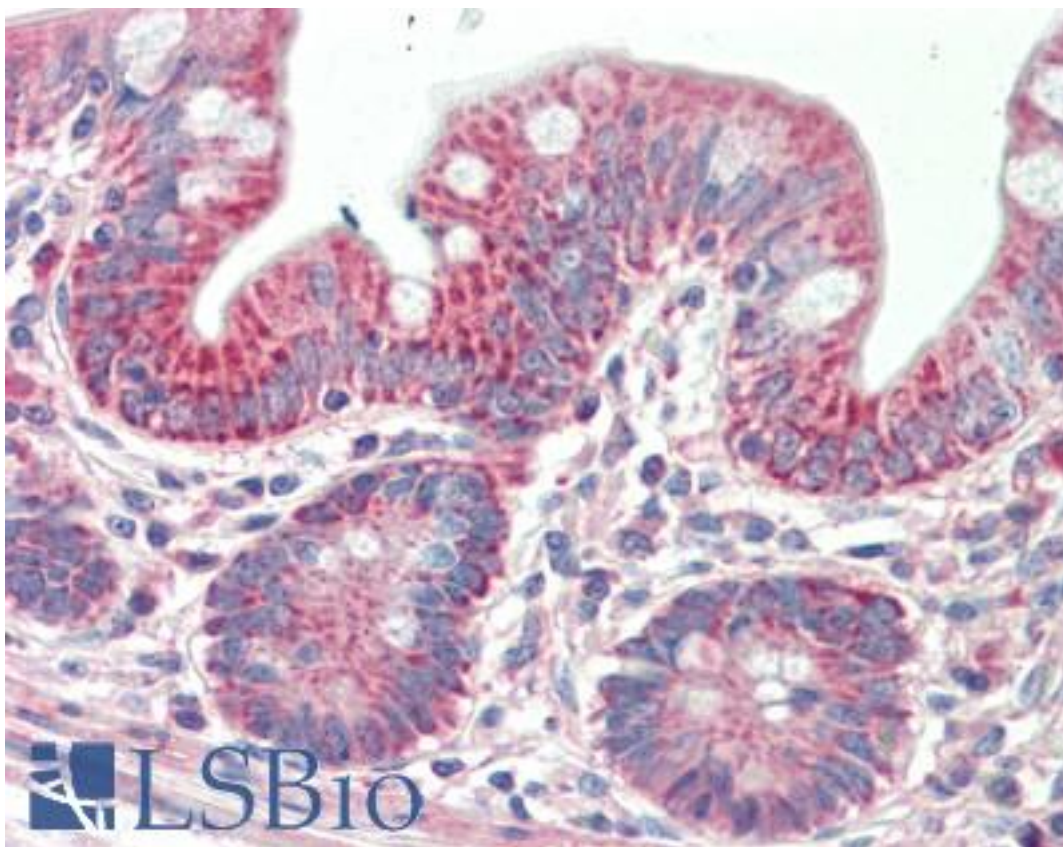


PTCD2 Goat anti-Human Polyclonal (aa214-226) Antibody - LS-B10394 - LSBio

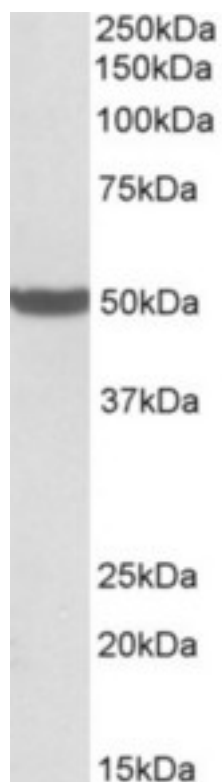
<b>CatalogID:</b>	LS-B10394
<b>Validation:</b>	This antibody replaces catalog number LS-C186589. It has been validated for use in the following assays: IHC-P.
<b>Target:</b>	Pentatricopeptide Repeat Domain 2 (PTCD2)
<b>Synonyms:</b>	PTCD2 Antibody
<b>Host</b>	PTCD2 antibody was produced in Goat
<b>Clonality:</b>	Polyclonal
<b>Immunogen Species:</b>	PTCD2 antibody was raised against Human
<b>Antigen Type:</b>	Synthetic peptide
<b>Immunogen:</b>	PTCD2 antibody was raised against synthetic peptide NSPESFKICTTLR from an internal region of human PTCD2 (NP_079030.3). Percent identity by BLAST analysis: Hamster, Elephant, Pig (100%); Rat, Ferret, Panda, Dog, Cat, Bovine, Rabbit, Horse (92%); Orangutan, Guinea pig, Lizard (85%).
<b>Specificity:</b>	Human PTCD2
<b>Epitope:</b>	aa214-226
<b>Reactivity:</b>	Human, Hamster, Pig
<b>Purification:</b>	Immunoaffinity purified
<b>Presentation:</b>	Tris-buffered saline, pH 7.3, 0.5% BSA, 0.02% sodium azide
<b>Recommended Storage:</b>	Store at -20°C. Minimize freezing and thawing.
<b>Usage Summary:</b>	Peptide ELISA: antibody detection limit dilution 1:128000. Western blot: Approx 50kD band observed in all Human tissues and cell line lysates tested (calculated MW of 44.0kD according to NP_079030.3). The observed molecular weight corresponds to earlier findings with different antibodies from other commercial sources. Recommended concentration: 0.5-2 ug/ml.
<b>Uses:</b>	IHC - Paraffin (5 µg/ml), Western blot (0.5 - 2 µg/ml), ELISA (1:128000) (Optimal dilution to be determined by the researcher)
<b>Size:</b>	50 µg
<b>Concentration:</b>	0.5 mg/ml

**Immunohistochemistry Image:**



Human Small Intestine: Formalin-Fixed, Paraffin-Embedded (FFPE)

**Western Blot Image:**



PTCD2 antibody (0.5 ug/ml) staining of Human Liver lysate (35 ug protein in RIPA buffer).  
Primary incubation was 1 hour. Detected by chemiluminescence.

**Requested From:**

Japan

Laboratory Reagent For In Vitro Research Use Only

Not for resale without prior written consent from LifeSpan BioSciences, Inc.

Created on 9/23/2014

© 2014 LifeSpan BioSciences