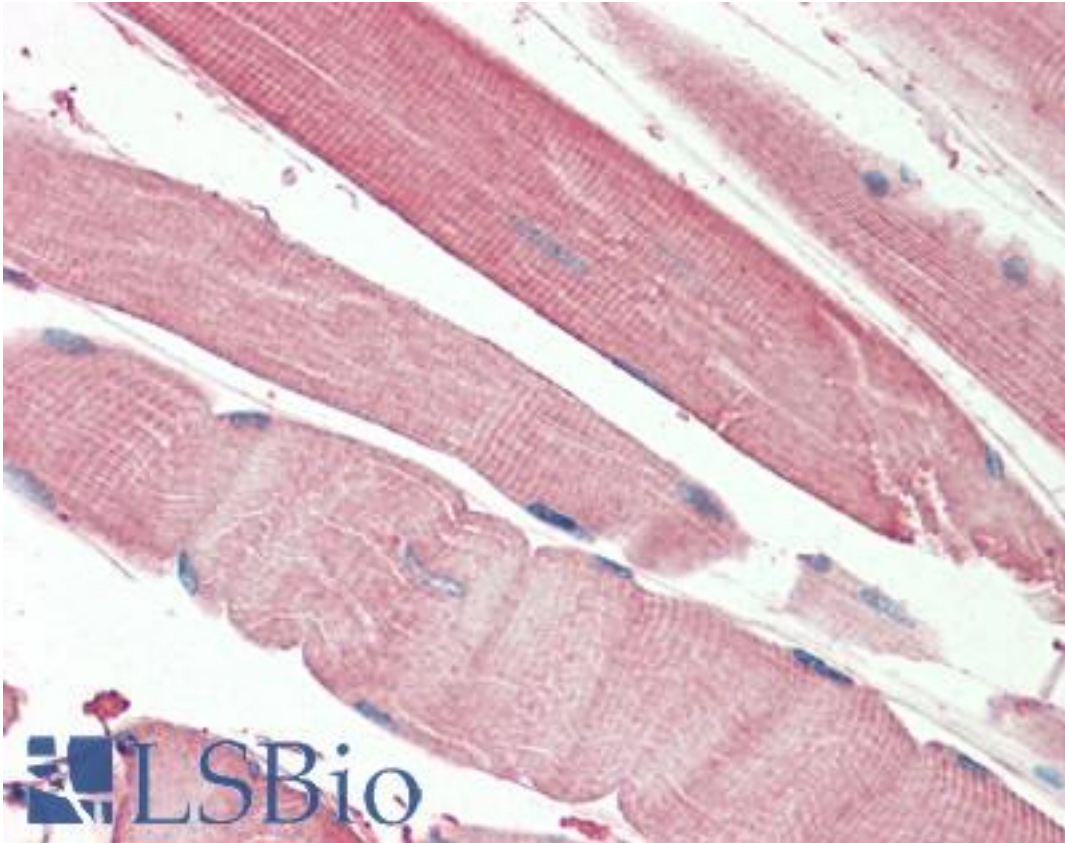


THNSL2 Goat anti-Human Polyclonal (aa192-204) Antibody - LS-B10393 - LSBio

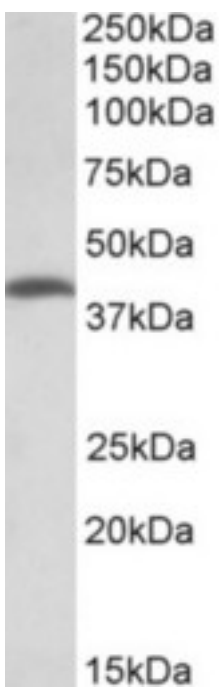
| | |
|-----------------------------|--|
| CatalogID: | LS-B10393 |
| Validation: | This antibody replaces catalog number LS-C186608. It has been validated for use in the following assays: IHC-P. |
| Target: | threonine synthase-like 2 (<i>S. cerevisiae</i>) (THNSL2) |
| Synonyms: | THNSL2 Antibody, Threonine synthase-like 2 Antibody, THS2 Antibody, TSH2 Antibody, SOFAT Antibody |
| Host | THNSL2 antibody was produced in Goat |
| Clonality: | Polyclonal |
| Immunogen Species: | THNSL2 antibody was raised against Human |
| Antigen Type: | Synthetic peptide |
| Immunogen: | THNSL2 antibody was raised against synthetic peptide C-EGNSDELDEPIKT from an internal region of human THNSL2 (NP_060741.3; NP_001231605.1; NP_001231607.1). Percent identity by BLAST analysis: Hamster, Panda, Dog, Horse, Guinea pig (92%); Cat, Rabbit, Platypus, Lizard (85%). |
| Specificity: | Human THNSL2. This antibody is expected to recognize all reported isoforms (NP_060741.3; NP_001231605.1; NP_001231607.1). |
| Epitope: | aa192-204 |
| Reactivity: | Human |
| Purification: | Immunoaffinity purified |
| Presentation: | Tris-buffered saline, pH 7.3, 0.5% BSA, 0.02% sodium azide |
| Recommended Storage: | Store at -20°C. Minimize freezing and thawing. |
| Usage Summary: | Peptide ELISA: antibody detection limit dilution 1:128000. Western blot: Approx 40kD band observed in Human Colorectal cancer lysates (calculated MW of 45.0kD according to NP_001231605.1). Recommended concentration: 1-3 ug/ml. |
| Uses: | IHC - Paraffin (5 µg/ml), Western blot (1 - 3 µg/ml), ELISA (1:128000) (Optimal dilution to be determined by the researcher) |
| Size: | 50 µg |
| Concentration: | 0.5 mg/ml |

Immunohistochemistry Image:



Human Skeletal Muscle: Formalin-Fixed, Paraffin-Embedded (FFPE)

Western Blot Image:



THNSL2 antibody (2 ug/ml) staining of Human Colorectal Cancer lysate (35 ug protein in RIPA buffer). Primary incubation was 1 hour. Detected by chemiluminescence.

| | |
|--|-------|
| Requested From: | Japan |
| Laboratory Reagent For In Vitro Research Use Only | |
| Not for resale without prior written consent from LifeSpan BioSciences, Inc. | |
| Created on 9/23/2014 | |
| © 2014 LifeSpan BioSciences | |