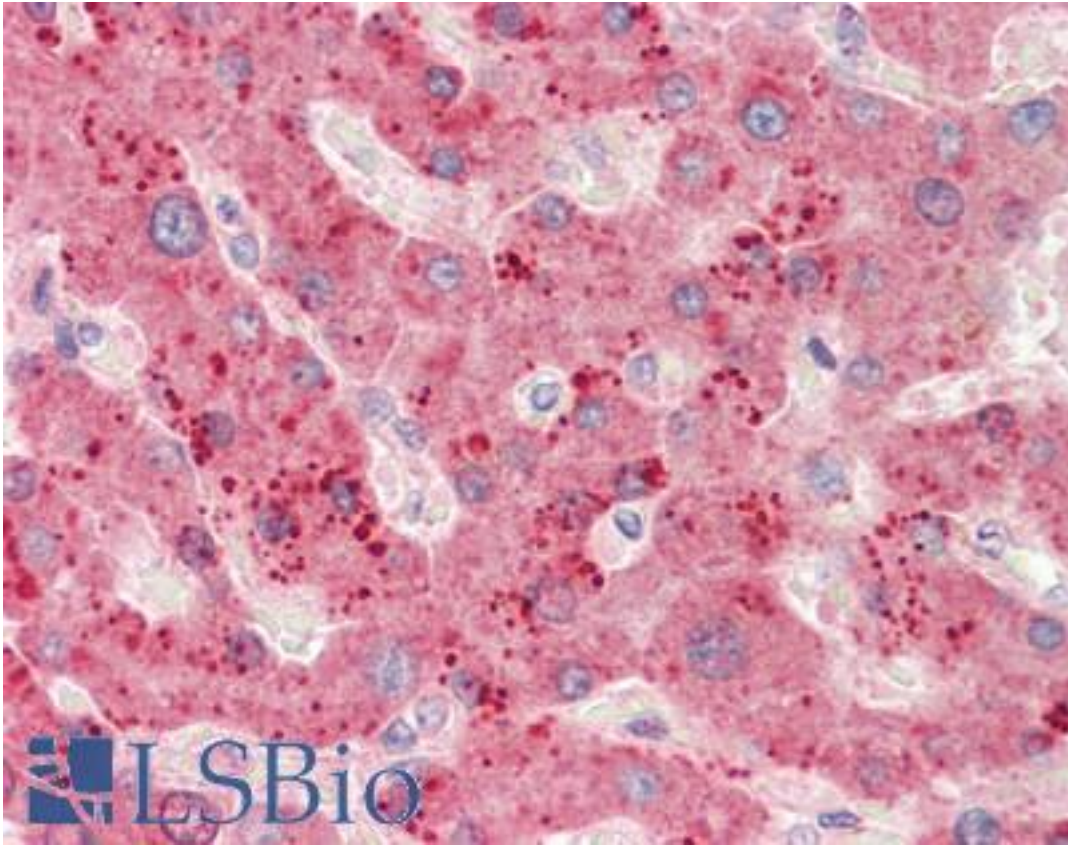


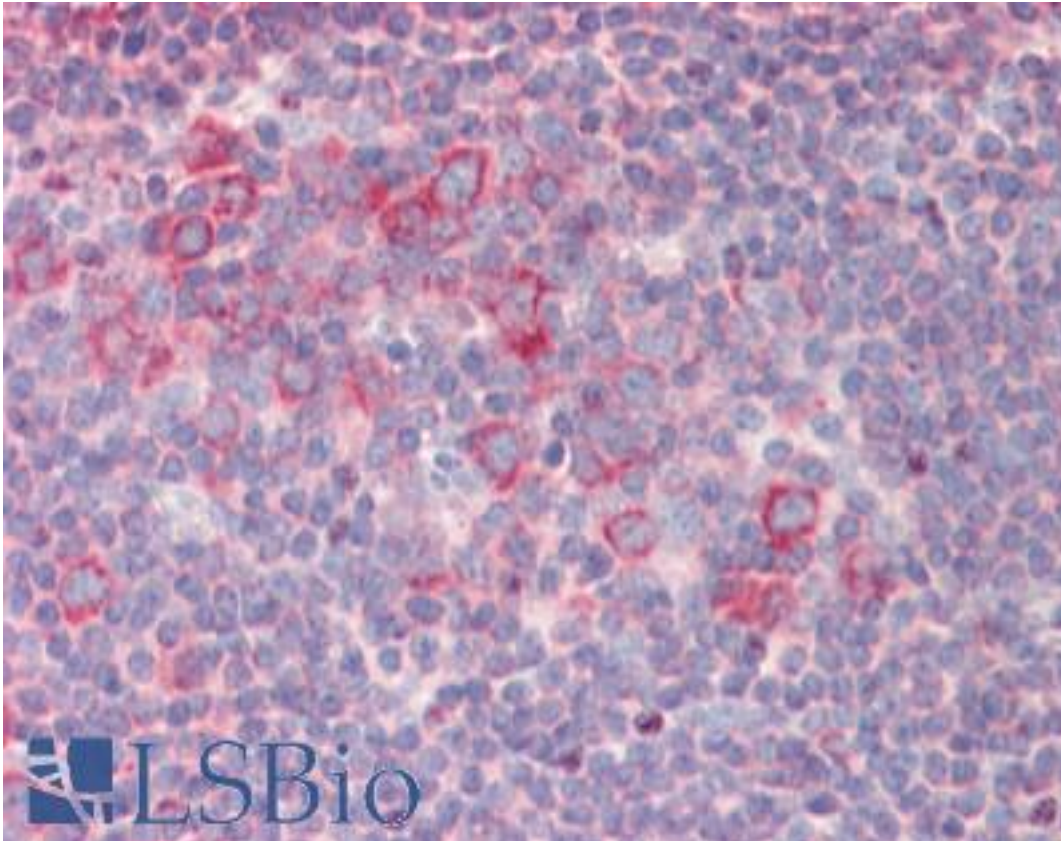
RPL23 / L23 Goat anti-Human Polyclonal (C-Terminus) Antibody - LS-B10389 - LSBio	
CatalogID:	LS-B10389
Validation:	This antibody replaces catalog number LS-C186599. It has been validated for use in the following assays: IHC-P.
Target:	Ribosomal Protein L23 (RPL23)
Synonyms:	RPL23 Antibody, 60S ribosomal protein L23 Antibody, 60S ribosomal protein L17 Antibody, L23 Antibody, Ribosomal protein L17 Antibody, Ribosomal protein L23 Antibody
Host	RPL23 antibody was produced in Goat
Clonality:	Polyclonal
Immunogen Species:	RPL23 / L23 antibody was raised against Human
Antigen Type:	Synthetic peptide
Immunogen:	RPL23 / L23 antibody was raised against synthetic peptide KECADLWPRIASN from the C-terminus of human RPL23 / L23 (NP_000969.1). Percent identity by BLAST analysis: Hamster, Elephant, Panda, Dog, Cat, Bovine, Rabbit, Pig, Opossum, Guinea pig, Turkey, Zebra finch, Chicken, Platypus, Lizard, Xenopus, Trout, Seabass, Catfish, Salmon, Stickleback, Medaka, Pike, Pufferfish, Zebrafish, Drosophila, Mosquito, Nematode, Phytophthora, Bloom alga (100%).
Specificity:	Human RPL23 / L23
Epitope:	C-Terminus
Reactivity:	Human, Bovine, Dog, Guinea pig, Hamster, Pig, Rabbit, Chicken, Xenopus, Zebrafish, Drosophila, Insect
Purification:	Immunoaffinity purified
Presentation:	Tris-buffered saline, pH 7.3, 0.5% BSA, 0.02% sodium azide
Recommended Storage:	Store at -20°C. Minimize freezing and thawing.
Usage Summary:	Peptide ELISA: antibody detection limit dilution 1:128000. Western blot: Approx 16kD band observed in lysates of Human Colorectal Cancer and of cell lines NIH3T3 and HeLa (calculated MW of 14.9kD according to NP_000969.1). Recommended concentration: 0.1-0.3 µg/ml.
Uses:	IHC - Paraffin (5 µg/ml), Western blot (0.1 - 0.3 µg/ml), ELISA (1:128000) (Optimal dilution to be determined by the researcher)
Size:	50 µg
Concentration:	0.5 mg/ml

Immunohistochemistry Image:



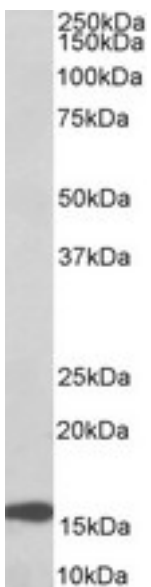
Human Liver: Formalin-Fixed, Paraffin-Embedded (FFPE)

Immunohistochemistry Image:



Human Tonsil: Formalin-Fixed, Paraffin-Embedded (FFPE)

Western Blot Image:



RPL23 antibody (0.1 ug/ml) staining of Human Colorectal Cancer lysate (35 ug protein in RIPA buffer). Primary incubation was 1 hour. Detected by chemiluminescence.

Requested From:

Japan

Laboratory Reagent For In Vitro Research Use Only

Not for resale without prior written consent from LifeSpan BioSciences, Inc.

Created on 9/23/2014

© 2014 LifeSpan BioSciences