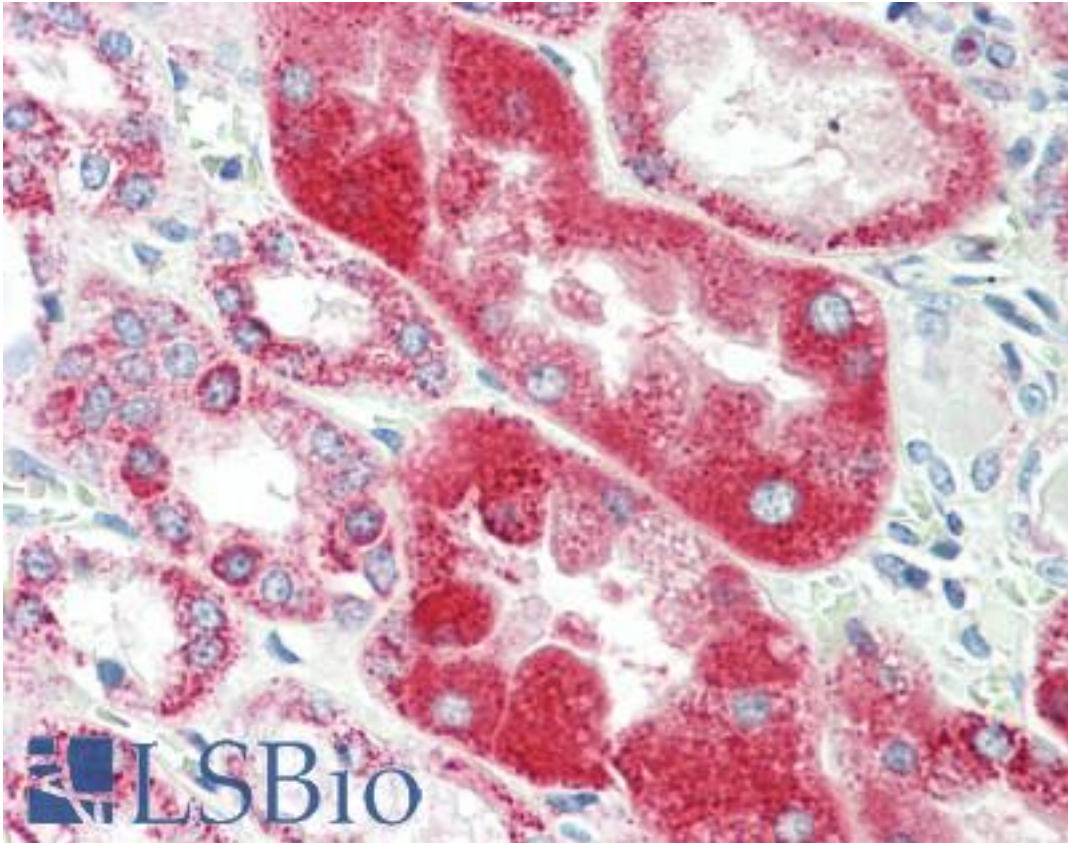


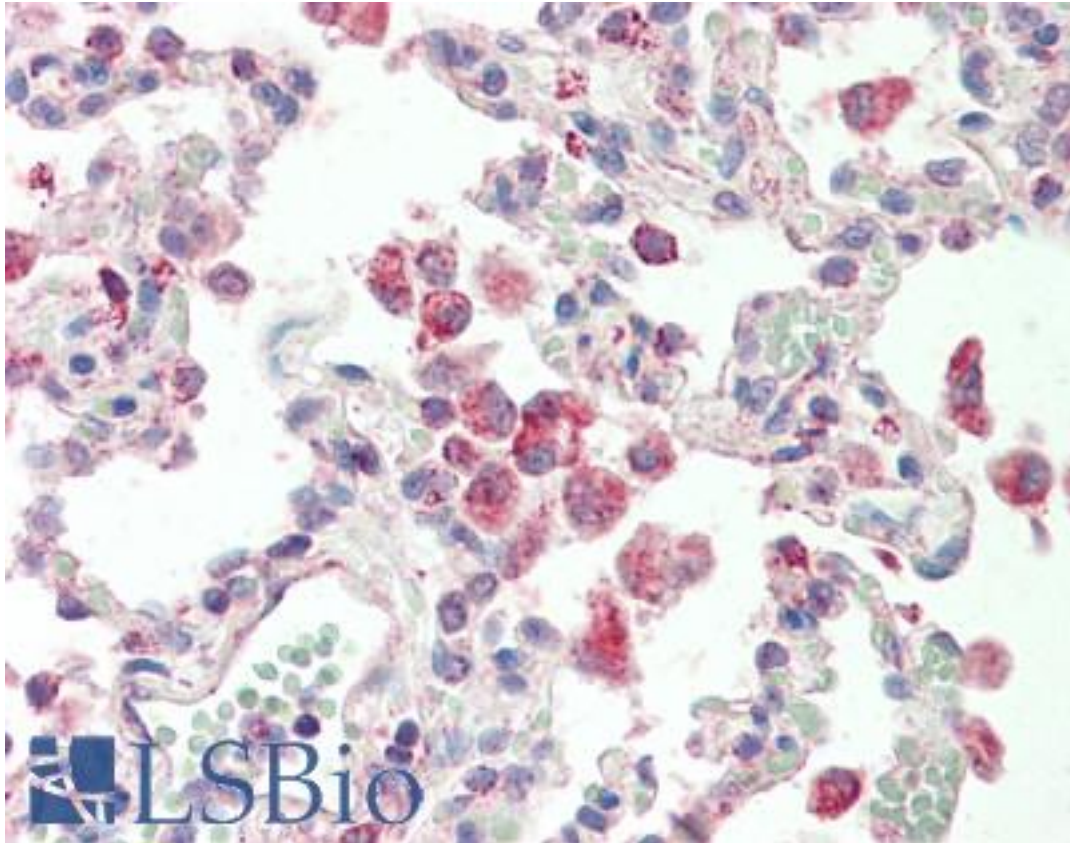
GLRA1/Glycine Receptor Alpha 1 Goat anti-Rat Polyclonal (Internal) Antibody - LS-B10386 - LSBio	
<b>CatalogID:</b>	LS-B10386
<b>Validation:</b>	This antibody replaces catalog number LS-C186508. It has been validated for use in the following assays: IHC-P.
<b>Target:</b>	glycine receptor, alpha 1 (GLRA1)
<b>Synonyms:</b>	GLRA1 Antibody, Alpha 1 glycine Receptor Antibody, GlyR alpha 1 Antibody, GLYRA1 Antibody, SPD Antibody, STHE Antibody, Spasmodic Antibody, Glycine receptor alpha 1 Antibody, Glycine receptor, alpha 1 Antibody, HKPX1 Antibody, Strychnine binding subunit Antibody
<b>Family / Subfamily:</b>	Ion Channel / Glycine receptor
<b>Host</b>	GLRA1 antibody was produced in Goat
<b>Clonality:</b>	Polyclonal
<b>Immunogen Species:</b>	GLRA1/Glycine Receptor Alpha 1 antibody was raised against Rat
<b>Immunogen:</b>	GLRA1/Glycine Receptor Alpha 1 antibody was raised against synthetic peptide CLQAKDGISVKGAN from an internal region of rat GLRA1 (NP_037265.1). Percent identity by BLAST analysis: Human, Hamster, Panda, Dog, Cat, Bovine, Horse, Rabbit, Pig, Opossum, Turkey, Zebra finch, Chicken, Lizard (100%); Galago, Guinea pig, Platypus (93%).
<b>Specificity:</b>	Human GLRA1. The immunizing peptide represents part of the cytoplasmic domain. The antibody is not expected to cross-react with other glycine receptor alpha proteins.
<b>Epitope:</b>	Internal
<b>Reactivity:</b>	Rat, Human, Mouse, Bovine, Dog, Hamster, Horse, Pig, Rabbit, Chicken
<b>Purification:</b>	Immunoaffinity purified
<b>Presentation:</b>	Tris-buffered saline, pH 7.3, 0.5% BSA, 0.02% sodium azide
<b>Recommended Storage:</b>	Store at -20°C. Minimize freezing and thawing.
<b>Usage Summary:</b>	Peptide ELISA: antibody detection limit dilution 1:128000. Western blot: Approx 60kD band observed in Mouse and Rat Testis lysates (calculated MW of 51.7kD according to Mouse NP_065238.2). The observed molecular weight corresponds to the glycosylated form. Recommended concentration: 0.3-1 ug/ml.
<b>Uses:</b>	IHC - Paraffin (5 µg/ml), Western blot (0.3 - 1 µg/ml), ELISA (1:128000) (Optimal dilution to be determined by the researcher)
<b>Size:</b>	50 µg
<b>Concentration:</b>	0.5 mg/ml

**Immunohistochemistry Image:**



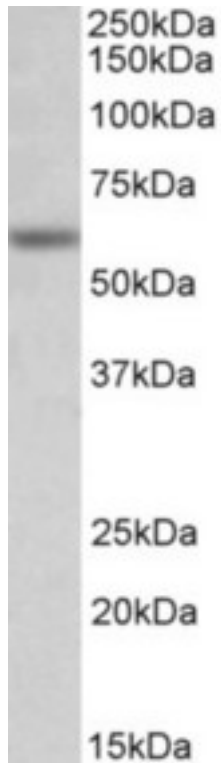
Human Kidney: Formalin-Fixed, Paraffin-Embedded (FFPE)

**Immunohistochemistry Image:**



Human Lung: Formalin-Fixed, Paraffin-Embedded (FFPE)

**Western Blot Image:**



GLRA1 antibody (0.3 ug/ml) staining of Mouse Testis lysate (35 ug protein in RIPA buffer). Primary incubation was 1 hour. Detected by chemiluminescence.

**Requested From:**

Japan

Laboratory Reagent For In Vitro Research Use Only

Not for resale without prior written consent from LifeSpan BioSciences, Inc.

Created on 9/23/2014

© 2014 LifeSpan BioSciences