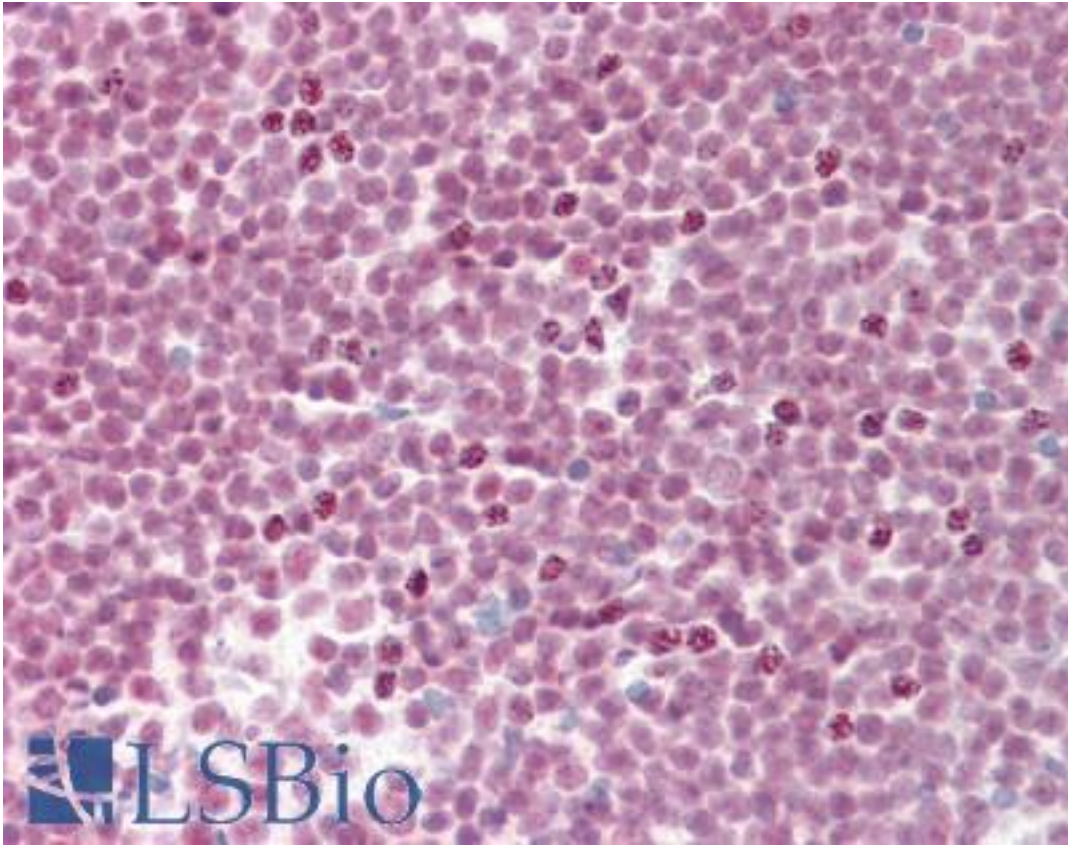


SF3B4 Mouse anti-Human Monoclonal (3A1) Antibody - LS-B10383 - LSBio

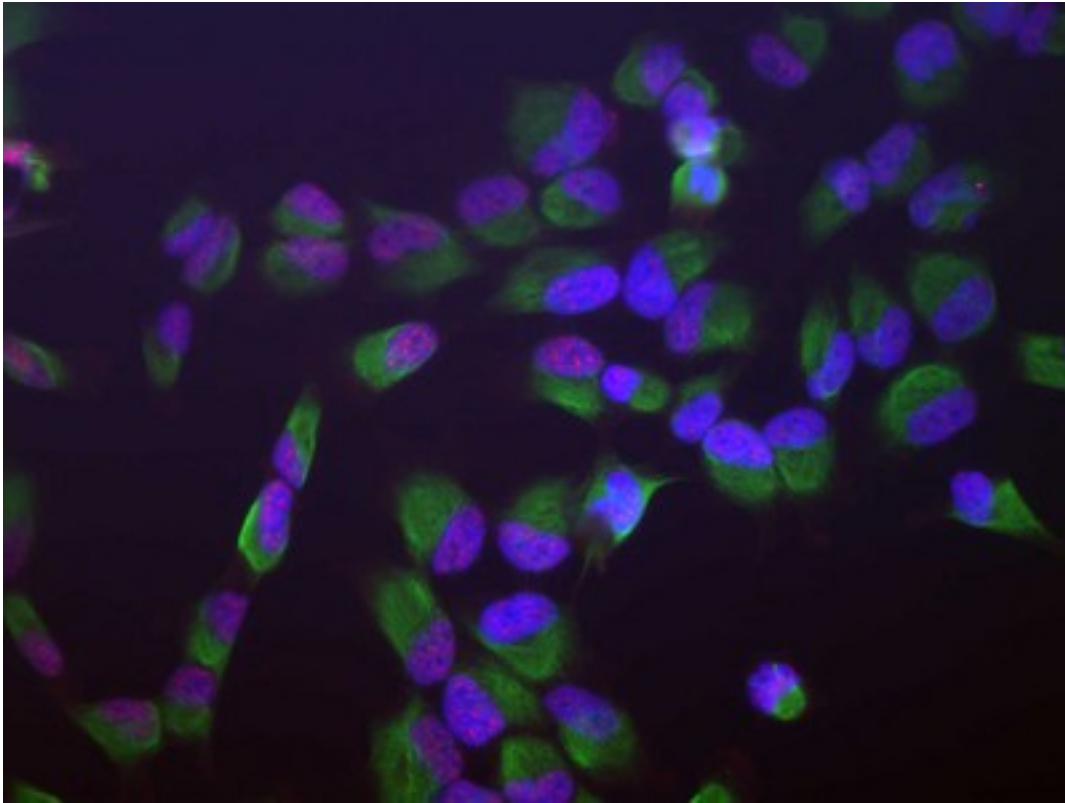
CatalogID:	LS-B10383
Validation:	This antibody replaces catalog number LS-C204582. It has been validated for use in the following assays: IHC-P.
Target:	splicing factor 3b, subunit 4, 49kDa (SF3B4)
Synonyms:	SF3B4 Antibody, AFD1 Antibody, Hsh49 Antibody, SAP 49 Antibody, Spliceosomal protein Antibody, SF3b50 Antibody, SAP49 Antibody, SF3b49 Antibody, Splicing factor 3B subunit 4 Antibody
Host	SF3B4 antibody was produced in Mouse
Clonality:	Monoclonal
Isotype:	IgG2b,k
Clone Name:	3A1
Immunogen Species:	SF3B4 antibody was raised against Human
Antigen Type:	Recombinant protein
Immunogen:	SF3B4 antibody was raised against full length recombinant human SF3B4 expressed in and purified from E. coli.
Specificity:	Clone 3A1 is known to react with SF3B4 from human, cow, pig, mouse, rat and other mammals. Since the SF3B4 protein sequence is highly conserved across species barriers, it is likely that the antibody is effective on many other species also.
Reactivity:	Human, Mouse, Rat, Bovine, Pig
Purification:	Affinity purified
Presentation:	PBS, 10 mM sodium azide.
Recommended Storage:	+4°C or -20°C, Avoid repeated freezing and thawing.
Usage Summary:	The antibody solution can be used at dilutions of at least 1:1000 in immunofluorescence experiments. In western blotting using chemiluminescence it can be used at dilutions of 1:1000 or lower.
Uses:	IHC - Paraffin (10 µg/ml), ICC (1:1000), Immunofluorescence (1:1000), Western blot (1:1000) (Optimal dilution to be determined by the researcher)
Size:	50 µl

Immunohistochemistry Image:



Human Tonsil: Formalin-Fixed, Paraffin-Embedded (FFPE)

Immunocytochemistry Image:



Human HeLa cells stained with SF3B4 antibody (red), chicken antibody to vimentin (green) and DNA (blue, stained with DAPI). The SF3B4 antibody reveals strong granular nuclear staining which is a little different from the DNA stain and presumably reflects splicosomal complexes. The vimentin antibody stains the cytoplasmic intermediate filament network of the HeLa cells.

Western Blot Image:



Blots of HeLa cell crude extract stained with SF3B4 antibody. SF3B4 runs with an apparent SDS-PAGE molecular weight 49kDa.

Requested From:

Japan

Laboratory Reagent For In Vitro Research Use Only

Not for resale without prior written consent from LifeSpan BioSciences, Inc.

Created on 9/23/2014

© 2014 LifeSpan BioSciences