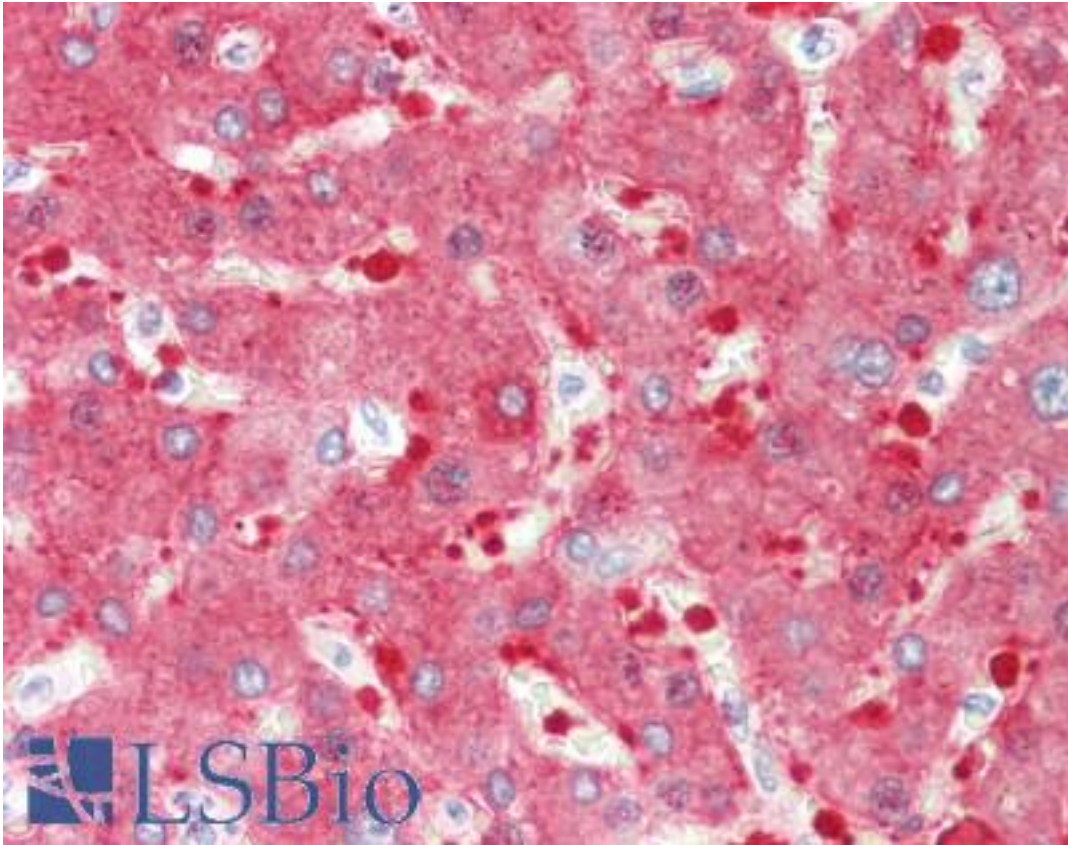


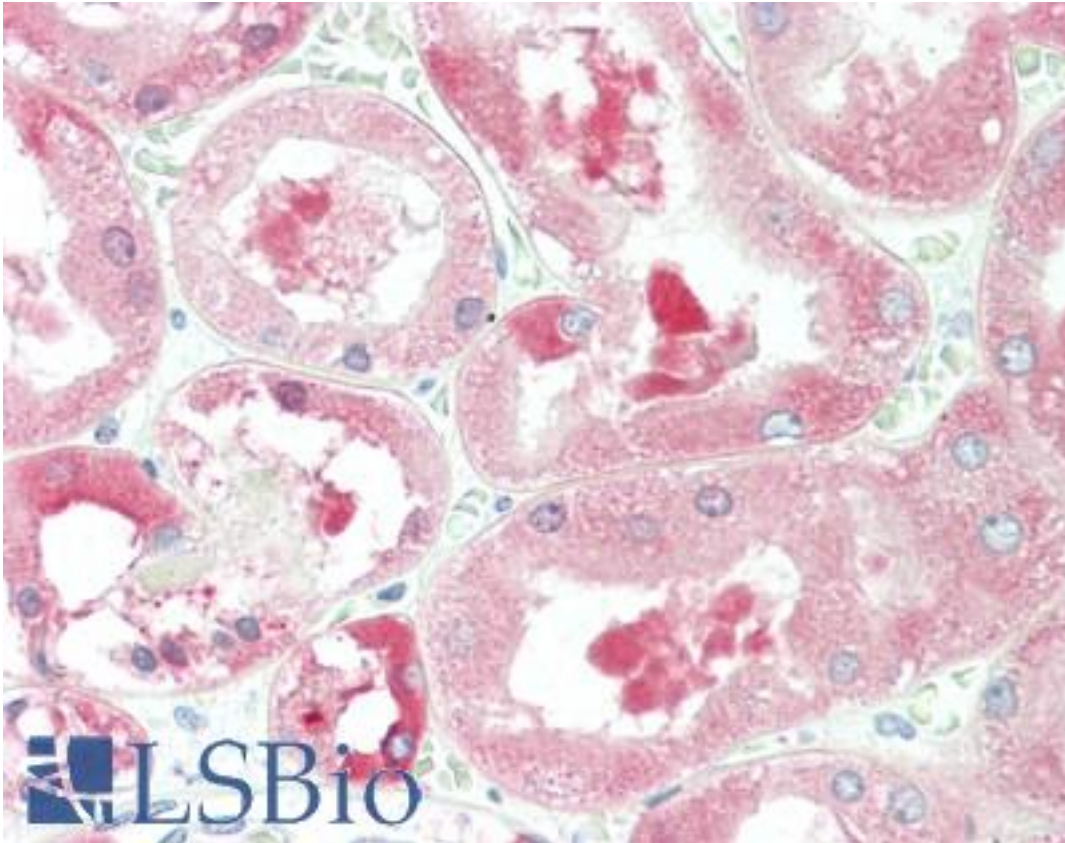
ALDH1L1 Mouse anti-Human Monoclonal Antibody - LS-B10382 - LSBio	
CatalogID:	LS-B10382
Validation:	This antibody replaces catalog number LS-C204355. It has been validated for use in the following assays: IHC-P.
Target:	aldehyde dehydrogenase 1 family, member L1 (ALDH1L1)
Synonyms:	ALDH1L1 Antibody, 10-fTHF Antibody, 10-FTHFDH Antibody, FTHFD Antibody, FDH Antibody
Host	ALDH1L1 antibody was produced in Mouse
Clonality:	Monoclonal
Isotype:	IgG1
Immunogen Species:	ALDH1L1 antibody was raised against Human
Immunogen:	ALDH1L1 antibody was raised against monoclonal antibody was raised against amino acids 402-902 of human ALDH1L1 expressed in and purified from E. coli.
Reactivity:	Human, Rat
Purification:	Protein G purified
Presentation:	PBS, 10 mM sodium azide.
Recommended Storage:	Short term 4°C, long term aliquot and store at -20°C, avoid freeze thaw cycles. Store undiluted.
Uses:	IHC - Paraffin (10 µg/ml), Immunofluorescence (1:2000), Western blot (1:5000 - 1:10000) (Optimal dilution to be determined by the researcher)
Size:	50 µl
Concentration:	1 mg/ml

Immunohistochemistry Image:



Human Liver: Formalin-Fixed, Paraffin-Embedded (FFPE)

Immunohistochemistry Image:



Human Kidney: Formalin-Fixed, Paraffin-Embedded (FFPE)

Requested From:

Japan

Laboratory Reagent For In Vitro Research Use Only

Not for resale without prior written consent from LifeSpan BioSciences, Inc.

Created on 9/23/2014

© 2014 LifeSpan BioSciences